

# Carl Zeiss Compact Prime CP.2 Lenses



We make it visible.

# High Flexibility Meets Maximum Quality

The Compact Prime CP.2 lenses are the latest members of the ZEISS family of lenses for digital and film cameras. This second generation of the Compact Prime lenses now delivers even greater flexibility by introducing interchangeable mounts that allow the lenses to be used with a wide range of cameras from traditional cine to HDSLR systems. This new generation also offers a wide choice of lenses – from wide-angle to tele lenses (18 to 100 mm, including a 50 mm macro lens). Affordable, flexible, yet of the highest quality, the new Compact Prime CP.2 lenses are a valuable edition to any film set and any level of cinematographic equipment.



## Interchangeable Mount

The Compact Prime CP.2 lenses are the world's first cine lenses designed for use with HDSLR cameras. The interchangeable mount guarantees high flexibility for present and future use in any situation and for a wide range of camera platforms.

- Allows a mix of HDSLR systems with traditional cine cameras, for maximum flexibility on set
- No need for adapter solutions anymore
- Five different mounts available (PL, EF, F, Micro 4/3 and E mount)

## Ready for the Future

The Compact Prime CP.2 lenses cover a full-frame image format without vignetting. Combined with the interchangeable mount, the Compact Prime CP.2 offers the possibility to upgrade to any number of existing or future cine and still cameras while still utilizing the same set of lenses.

- Full-frame coverage (24 x 36 mm) for focal lengths 21 to 100 mm
- Common aperture of T2.1 for the standard lens set
- Sweet spot effect with APS-C sensors

## Unique 14-Blade Iris

The iris opening of the Compact Prime CP.2 lenses is created by 14 high precision blades. It stays consistently round and symmetrical over the entire T-stop range. This translates into natural and pleasing out-of-focus highlights and a smooth bokeh. Together they help create and capture special moments on film.

## High Optical Performance

The modern lens design as well as the cine manufacturing process and tight tolerances ensure low distortion, high resolution and excellent color rendition for sharp, punchy images.

- High resolution and contrast
- Low distortion
- Color matched

# Main Features

Great flare suppression through T\* anti-reflex coating and internal light traps

Calibrated lens scales

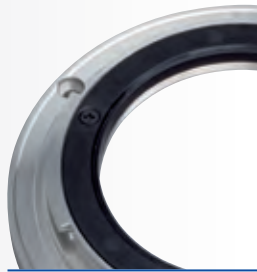
Standard focus and iris gear positions

Robust and reliable cine style housing

Interchangeable mounts



PL mount



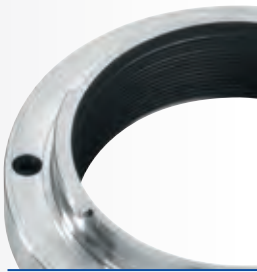
EF mount



F mount



Micro 4/3 mount



E mount



Made for Micro 4/3

Scale 1:1

Image shows original size

# High Flexibility Meets Full-Frame Coverage (24 x 36 mm)



With its long history in both photo and cine lenses, Carl Zeiss is dedicated to supporting filmmakers and allowing them to benefit from the highest possible image quality in any situation.

The new Compact Prime CP.2 lenses offer professional quality on a budget and have been designed for both film cameras and the emerging generation of digital motion picture cameras. Covering the Super 35, Micro 4/3, APS-H as well as the full-frame still format, makes these lenses a safe investment for the future.

## Ciro Cappellari, director and cinematographer, on working with the ZEISS Compact Prime CP.2 lenses in »The Street and the Rag Ball«

“When making documentary films, I want to create images that are both intense and personal to build a stronger bond between the protagonists and the audience. For my documentary film »The Street and the Rag Ball« which I made during the 2010 Soccer World Cup, I fulfilled this goal to my full satisfaction using ZEISS Compact Prime CP.2 lenses.

To produce this film, I needed to capture the environment and mood of the Alexandra slum of Johannesburg, South Africa, where my story took place. This required both high-quality images of the landscapes and compact, flexible cine lenses. With the robust cine style housing and the interchangeable mount, the combination of the ZEISS Compact Prime CP.2 lenses and a DSLR-camera was just the right equipment to do this.



Combining the CP.2 with a small DSLR-camera with a full-frame sensor, the system produces outstanding images that any viewer will appreciate. Working with this equipment, I had confidence in everything that these technologies offer to both the amateur and professional cinematographer: high quality at an affordable price.”

# Made For The Set



Switching between traditional film, digital PL cine cameras and HDSLR cameras is no longer an issue. The improved functionality of Compact Prime CP.2 lenses means better ergonomics compared to standard SLR lenses:

- standard housing dimensions
- standard focus and iris gear positions
- consistent front diameter
- robust construction
- longer focus rotation and a manual focus
- stable exposure due to manual operated aperture

The Compact Prime CP.2 lenses will be based around a common aperture of T2.1 for the standard set – an improvement compared to the first generation lenses.

With precision and speed – Compact Prime CP.2 lenses are the perfect tool for Independent filmmakers, professional still photographers expanding their services or large studios using HDSLR equipment as a second camera unit for TV and film productions.

# High Flexibility Meets A Wide Range

Combined with interchangeable mounts and a wide product range – from wide-angle to tele lenses (18 to 100 mm, including a 50 mm macro lens) – the Compact Prime CP.2 lenses maximize ease of use. Changing the lenses is now fast and easy and offers great flexibility, regardless of the camera equipment used.



# HD Video Lens Product Comparison



	Compact Primes CP.2 lenses	SLR lenses (F- and EF-mount available)
Interchangeable mount	√ (PL, EF, F, E, MFT)	
Cine quality robust housing	√	
Compatible with standard rig	√	
Standard housing dimensions	√	
Standard focus/iris ring position	√	
Calibrated lens scales	√	
Standard focus rotation of 300°	√	
Number of iris blades	14	9
Consistent performance across whole T-stop range	+++	++
Distortion	+++	+++
Resolution	+++	+++
Evenly illuminated field	+++	+++
Close focus performance	+++	+++
Flare suppression	+++ <sup>1</sup>	++
Max. aperture	T2.1	f1.4
Number of lenses available	9	10 (F-mount) / 9 (EF-mount)
Widest/longest focal length (in mm)	18–100	18–100
Weight	++	+++
Max. image area covered	Full-frame still image (24 x 36 mm, 9.45" x 14.17") <sup>2</sup>	Full-frame still image (24 x 36 mm, 9.45" x 14.17") <sup>2</sup>

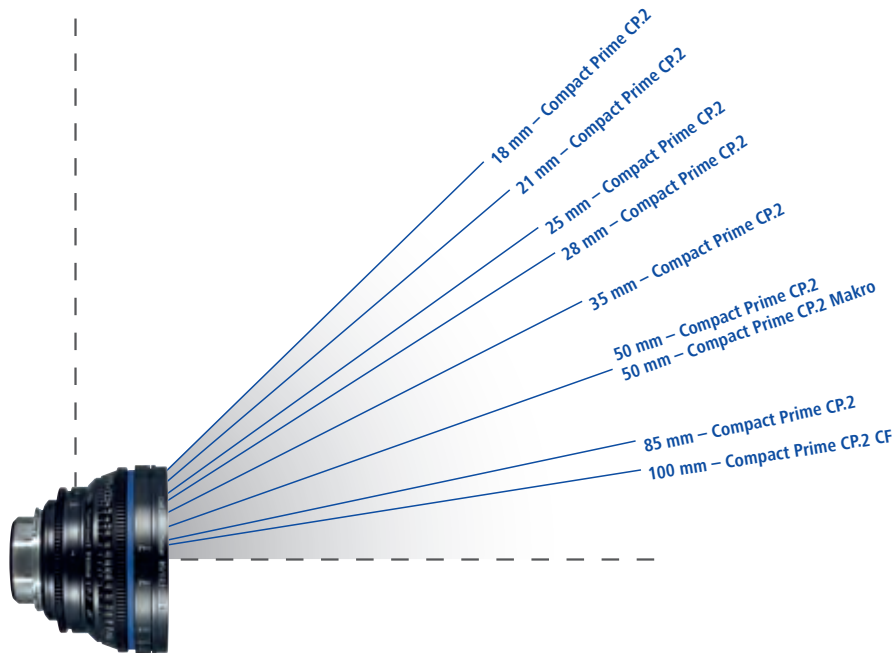
<sup>(1)</sup> The Compact Primes CP.2 and SLR lenses contain a number of flare suppressing measures, including the T\* lens coating, internal light traps and housing interiors painted with several types of black lacquer with different refractive indices. These measures ensure a high contrast image with clearly defined highlights and deep, rich blacks.

<sup>(2)</sup> The Compact Prime CP.2 18 mm/T3.6 covers ANSI Super 35 and Normal 35 image format.

# Technical Data

Prime Lenses	Type	Aperture range	T-Stop	Close focus distance <sup>1</sup>	Horizontal angle of view							Length <sup>8</sup>	Front diameter	Weight
					Full-Frame <sup>2</sup>	APS-H <sup>3</sup>	Super 35 <sup>4</sup>	Normal 35 <sup>5</sup>	APS-C <sup>6</sup>	MFT <sup>7</sup>				
Compact Prime CP.2 18 mm/T3.6	Distagon T*	T 3.6 to T 22	3.6	0.3 m / 12"	-	80.0°	69.3°	62.9°	69.8°	51.3°	80 mm / 3.15"	114 mm / 4.5"	0.9 kg / 2.0 lbs	
Compact Prime CP.2 21 mm/T2.9	Distagon T*	T 2.9 to T 22	2.9	0.24 m / 10"	81.2°	71.4°	61.3°	55.3°	61.7°	44.8°	80 mm / 3.15"	114 mm / 4.5"	1.0 kg / 2.2 lbs	
Compact Prime CP.2 25 mm/T2.9	Distagon T*	T 2.9 to T 22	2.9	0.17 m / 7"	71.5°	62.3°	52.9°	47.5°	53.3°	38.2°	80 mm / 3.15"	114 mm / 4.5"	0.9 kg / 2.0 lbs	
Compact Prime CP.2 28 mm/T2.1	Distagon T*	T 2.1 to T 22	2.1	0.24 m / 10"	65.5°	56.7°	47.9°	42.9°	48.3°	34.3°	80 mm / 3.15"	114 mm / 4.5"	1.0 kg / 2.2 lbs	
Compact Prime CP.2 35 mm/T2.1	Distagon T*	T 2.1 to T 22	2.1	0.3 m / 12"	54.4°	46.7°	39.2°	34.9°	39.5°	27.8°	80 mm / 3.15"	114 mm / 4.5"	1.0 kg / 2.2 lbs	
Compact Prime CP.2 50 mm/T2.1	Planar T*	T 2.1 to T 22	2.1	0.45 m / 18"	39.6°	33.6°	28.0°	24.8°	28.2°	19.6°	80 mm / 3.15"	114 mm / 4.5"	0.9 kg / 2.0 lbs	
Compact Prime CP.2 85 mm/T2.1	Planar T*	T 2.1 to T 22	2.1	1 m / 3' 3"	23.9°	20.1°	16.7°	14.7°	16.8°	11.6°	80 mm / 3.15"	114 mm / 4.5"	0.9 kg / 2.0 lbs	
Compact Prime CP.2 100mm/T2.1 <sup>CF</sup>	Planar T*	T 2.1 to T 22	2.1	0.7 m / 2'6"	20.4°	17.2°	14.2°	12.6°	14.3°	9.9°	132 mm / 5.19"	114 mm / 4.5"	1.49 kg / 3.3 lbs	
Compact Prime CP.2 50mm/T2.1 <sup>10</sup>	Makro-Planar T*	T 2.1 to T 22	2.1	0.24 m / 10"	39.6°	33.6°	28.0°	24.8°	28.2°	19.6°	132 mm / 5.19"	134 mm / 5.3"	1.35 kg / 3.0 lbs	

<sup>1</sup> Close focus distance is measured from the film plane. <sup>2</sup> Horizontal angle of view for a full-frame camera aperture (aspect ratio 1:1.5, dimensions 24 mm x 36 mm / 0.944" x 1.4173"). <sup>3</sup> Horizontal angle of view for an APS-H camera aperture (aspect ratio 1: 1.81, dimensions 30.2 mm x 16.7 mm / 1.19" x 0.66"). <sup>4</sup> Horizontal angle of view for an ANSI Super 35 Silent camera aperture (aspect ratio 1:1.33, dimensions 18.7 mm x 24.9 mm / 0.980" x 0.7362") <sup>5</sup> Horizontal angle of view for a Normal 35 Academy camera aperture (aspect ratio 1:1.37, dimensions 22 mm x 16 mm / 0.8661" x 0.6299"). <sup>6</sup> Horizontal angle of view for an APS-C camera aperture (aspect ratio 1: 1.50, dimensions 25.1 mm x 16.7 mm / 0.99" x 0.66") <sup>7</sup> Horizontal angle of view for a Micro 4/3 (MFT)-camera aperture (aspect ratio 1: 1.33, dimensions 17.3 mm x 13 mm / 0.68" x 0.51") <sup>8</sup> Front to PL mount flange. <sup>9</sup> CF: Close focus capability. <sup>10</sup> Exposure Compensation is labeled next to the magnification factor.



## Horizontal Angle Of View

Ranging from 18 to 100 mm, the nine focal lengths currently available in the Compact Prime CP.2 series cover all applications from wide angle to telephoto. The graphic shows schematically the horizontal angle of view of each focal length in comparison, regardless of the aspect ratio.