



Software Guide for

“C-700,C-7000 Series Utility”

Bundled as Standard with

C-700,C-7000 Series SPECTROMASTER

To customers:

Thank you for purchasing our product. Please read this Software Guide, the Product Operating Manual and the warranty carefully for proper and safe use.

# 1. Important notices

To customers: Please be sure to read the information below before use.

Thank you for purchasing our "C-700/C-7000 Series Utility."

Please read the following usage conditions carefully before using this product.

The customer and SEKONIC CORPORATION (hereafter referred to as "SEKONIC") conclude a contract as shown below regarding the use of this software provided with this contract.

## Software End User License Agreement

PLEASE READ CAREFULLY THE LICENSE AGREEMENT BELOW BEFORE OPENING THE PACKAGE OF THIS SOFTWARE ("SOFTWARE"), DOWNLOADING, INSTALLING OR USING THE SOFTWARE. OPENING THE PACKAGE, OR DOWNLOADING, INSTALLING OR USING THE SOFTWARE SHALL BE DEEMED YOUR LAWFUL ACCEPTANCE OF THE TERMS AND CONDITIONS BELOW. IF YOU DO NOT AGREE TO THEM, DO NOT DOWNLOAD, INSTALL, USE THE SOFTWARE, NOR OPEN THE PACKAGE.

### 1. Definitions

These terms also apply to any SEKONIC CORPORATION("SEKONIC")

- (a) updates,
- (b) supplements,
- (c) documents, and
- (d) software guide

for this software, unless other terms accompany those items. If so, those terms apply.

### 2. COPYRIGHT AND INTELLECTUAL PROPERTY RIGHTS

This is a license agreement and not an agreement for sale. SEKONIC owns, or has been licensed from other owners ("SEKONIC Licensor"), copyrights and other intellectual property rights of the Software, and any and all rights and title to the Software and any copy made from it are retained by SEKONIC or SEKONIC Licensor. In no event, this Agreement shall be deemed to assign any copyright and/or any intellectual property rights of the Software from SEKONIC or SEKONIC Licensor to you. The Software is protected by copyright laws and international treaty provisions.

### 3. LICENSE

SEKONIC hereby grants to you a non-exclusive and limited license, and you may:

- (i) install and use the Software only on your computer(s) connected with a product for which this Software is designed;
- (ii) allow users of the computers described above to use the Software, provided that you assure that all such users comply with the terms of this Agreement;
- (iii) use the Software only for your own customary business or personal purpose;
- (iv) make one copy of the Software only for backup purpose in the support of the normal and intended use of the Software;
- (v) transfer the Software to other party by transferring a copy of this Agreement and all documentation along with the Software, provided that (a) you must, at the same time, either transfer to such other party or destroy all your other copies of the Software, (b) such transfer of possession terminates your license from SEKONIC, and (c) you must assure that such other party has agreed to accept the terms and conditions of this Agreement. If such other party does not accept such terms and conditions then you shall not transfer any copy of the Software.

### 4. RESTRICTIONS

(1) You shall not without the written consent of SEKONIC:

- (i) use, copy, modify, merge or transfer copies of the Software except as provided herein;
- (ii) reverse engineer, reverse assemble, reverse compile or any other way analyze the Software;
- (iii) sublicense, rent, lease or distribute the Software or any copy thereof; or
- (iv) remove, use, or alter any trademark, logo, copyright or other proprietary notices, legends, symbols or labels in the Software.

(2) You agree that you will not export the Software in any form in violation of any applicable laws and regulations regarding export control of any country.

## 5. DISCLAIMER OF WARRANTIES

(1) If the Software is furnished on CD-ROM(s) or other tangible object that is used for storage of digital data (hereinafter collectively "Storage Medium"), SEKONIC warrants the Storage Medium to be free from the defects in material and workmanship under normal use, for a period of ninety (90) days from the date of delivery to you. WITH THE EXCEPTION OF THE FOREGOING EXPRESS WARRANTIES APPLICABLE TO STORAGE MEDIUM ONLY, THE SOFTWARE IS PROVIDED TO YOU "AS IS" WITHOUT ANY WARRANTIES WHATSOEVER. SEKONIC, ITS AFFILIATE COMPANIES AND SEKONIC LICENSOR DISCLAIM ALL WARRANTIES WITH REGARD TO THE SOFTWARE, EXPRESS OR IMPLIED, INCLUDING, WITHOUT LIMITATION, IMPLIED WARRANTIES OF MERCHANTABILITY, FITNESS FOR A PARTICULAR PURPOSE AND NON-INFRINGEMENT OF THIRD PARTY RIGHTS.

(2) IN NO EVENT WILL SEKONIC, ITS AFFILIATE COMPANIES NOR SEKONIC LICENSOR BE LIABLE FOR ANY LOST PROFITS, LOST DATA, OR ANY OTHER INDIRECT, SPECIAL, PUNITIVE, INCIDENTAL OR CONSEQUENTIAL DAMAGES THAT RESULT FROM USE OR INABILITY TO USE THE SOFTWARE INCLUDING WITHOUT LIMITATION, DAMAGES FOR LOSS OF GOODWILL, COMPUTER FAILURE OR MALFUNCTION OR ANY AND ALL OTHER COMMERCIAL OR OTHER DAMAGES OR LOSSES, EVEN IF SEKONIC, ITS AFFILIATE COMPANIES OR SEKONIC LICENSOR HAS BEEN ADVISED OF THE POSSIBILITY OF SUCH DAMAGES OR FOR ANY CLAIM BY YOU BASED ON A THIRD PARTY CLAIM.

(3) The disclaimer of warranty hereunder does not affect your statutory rights. In case of the disclaimer is not allowed by applicable law, the disclaimer shall only apply to you to the maximum extent permitted by the law.

## 6. TERMINATION

You may terminate this license at any time by destroying the Software and all your copies of it. This Agreement shall also terminate if you fail to comply with any terms hereof. Upon such termination, you must immediately destroy all copies of the Software in your possession.

## 7. GOVERNING LAW

This Agreement shall be governed by the laws of Japan.

## 8. SEVERABILITY

In the event that any part or parts of this agreement shall be held illegal or null and void by any court or administrative body of competent jurisdiction, such determination shall not effect the remaining parts of this agreement and they shall remain in full force and effect as if such part or parts determined illegal or void had not been included.

YOU ACKNOWLEDGE THAT YOU HAVE READ THIS AGREEMENT, UNDERSTAND IT, AND AGREE TO BE BOUND BY ITS TERMS AND CONDITIONS. NEITHER PARTY SHALL BE BOUND BY ANY OTHER STATEMENTS OR REPRESENTATIONS THAT ARE INCONSISTENT WITH THE TERMS AND CONDITIONS OF THIS AGREEMENT. NO AMENDMENT TO THIS AGREEMENT IS EFFECTIVE UNLESS WRITTEN AND SIGNED BY PROPERLY AUTHORIZED REPRESENTATIVES OF EACH PARTY. BY OPENING THE PACKAGE, DOWNLOADING, INSTALLING OR USING THE SOFTWARE YOU AGREE TO ACCEPT THE TERMS OF THIS AGREEMENT.

JT109761-G\_en-00

### Introduction

This is a software guide for our “C-700/C-7000 Series Utility.”

Please note that screens and menus that are actually displayed may differ from those shown in this document. In that case, the actual display takes precedence. This document mainly uses the Windows version screens for explanations.

This document is written with the assumption that users have a basic knowledge of using personal computers (hereafter referred to as “computers”) and Windows/Macintosh operating system.

For use of computers and Windows/Macintosh operating system, please refer to the instructions supplied with the computer.

### About trademarks

- Windows is a registered trademark of Microsoft Corporation in the United States and other countries. The formal name of Windows is Microsoft® Windows® Operating System.
- Macintosh and OS X are trademarks of Apple Inc., registered in the United States and other countries.
- Other company names and product names are trademarks or registered trademarks of the respective company in Japan and abroad.

## 2. Cautions for proper and safe use

Please be sure to read this “Cautions for proper and safe use” carefully before using this product, and use the product properly.

[C-700]	}	Provides explanations on contents that vary by the connected model.
[C-700R]		
[C-7000]		

➡ Page \*      Indicates a reference Page.

### 3. Table of contents

1. Important notices.....	2
2. Cautions for proper and safe use .....	6
3. Table of contents .....	7
4. Major functions.....	9
5. Supported OS and installation procedures.....	10
5.1 Supported OS.....	10
5.2 How to install this software (on Windows) .....	11
5.3 How to uninstall this software (from Windows) .....	12
5.4 How to install this software (on Macintosh).....	13
5.5 How to uninstall this software (from Macintosh) .....	14
6. Connecting .....	16
6.1 How to connect to SPECTROMASTER.....	16
6.2 How to disconnect from SPECTROMASTER .....	19
7. Operation on each screen.....	20
7.1 Main screen .....	20
7.1.1 Menus .....	21
7.1.2 About This Utility screen.....	22
7.2 Product Information screen.....	23
7.3 Product Setting screen .....	24
7.3.1 Product Setting screen [C-700/C-700R] .....	25
7.3.2 Product Setting screen [C-7000] .....	29
7.3.3 Product Setting screen - Initialize.....	33
7.4 Memory Data Management screen.....	35
7.5 Preview screen .....	39
7.5.1 Menus .....	39
7.5.2 Preview / Spectral Distribution .....	40

7.5.3 Preview / CRI ..... 40

7.5.4 Preview / White balance [C-700/C-700R]..... 41

7.5.5 Preview / CIE 1931 Chromaticity Diagram [C-7000] ..... 41

7.5.6 Preview / CIE1976 Chromaticity Diagram [C-7000] ..... 42

7.5.7 Preview / Text..... 43

7.6 Update screen ..... 45

    7.6.1 Proxy Setting..... 50

8. Appendix ..... 52



## 4. Major functions

This software is equipped with the following functions to support the “C-700/C-7000 Series SPECTROMASTER” (hereafter referred to as “SPECTROMASTER”):

1. Displaying SPECTROMASTER measurement results in figures and graphs and saving them in files
2. Editing SPECTROMASTER settings
3. Updating the SPECTROMASTER firmware (hereafter referred to as “FW”), Operating Manual and this software

Models compatible with this software are as follows:

- C-700/C-700R
- C-7000

## 5. Supported OS and installation procedures

### 5.1 Supported OS

Table 1 Supported OS

Software	Supported OS	Remarks
Windows	Windows7 SP1 Windows8 Windows8.1	Supports both 32-bit and 64-bit versions for each OS.
Macintosh	OS X v10.7 OS X v10.8 OS X v10.9	Supports both 32-bit and 64-bit versions for 10.7. Supports 64-bit version for 10.8 and 10.9.

## 5.2 How to install this software (on Windows)

Turn on your computer and start Windows. Insert the CD-ROM supplied with this product into the CD-ROM drive. Then, double-click AutoRun.exe in the CD-ROM.



Figure 1 Auto Run

Select the model name and a language to use. Then, click the item to install ("USB Driver," "Operating Manual" or "Utility").

After the installer of the selected target is started, click the "Next" button according to the installer instructions and proceed through the installation process.

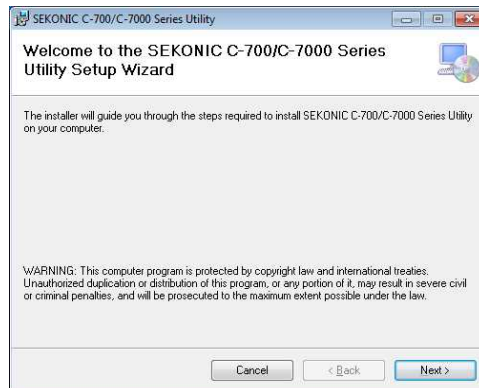


Figure 2 Installer

## 5.3 How to uninstall this software (from Windows)

Open the Control Panel. Click “Uninstall a program” in the program menu.

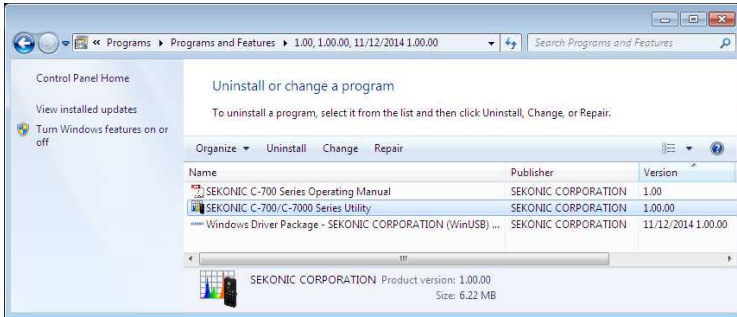


Figure 3 Uninstall a program

Select the item to uninstall and click “Uninstall.”

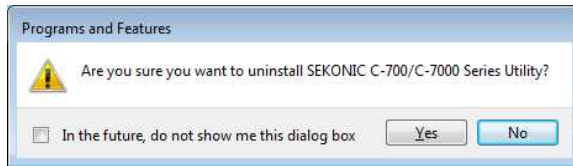


Figure 4 Programs and Features

Click “Yes” on the confirmation screen to start and complete the uninstallation.

## 5.4 How to install this software (on Macintosh)

Turn on your Macintosh computer and start OS X. Insert the CD-ROM supplied with this product into the CD-ROM drive. Then, open the folder in the CD-ROM.



Figure 5 Installer folder on Macintosh

Double-click the “SetupC700C7000Utility.pkg” icon in the folder.

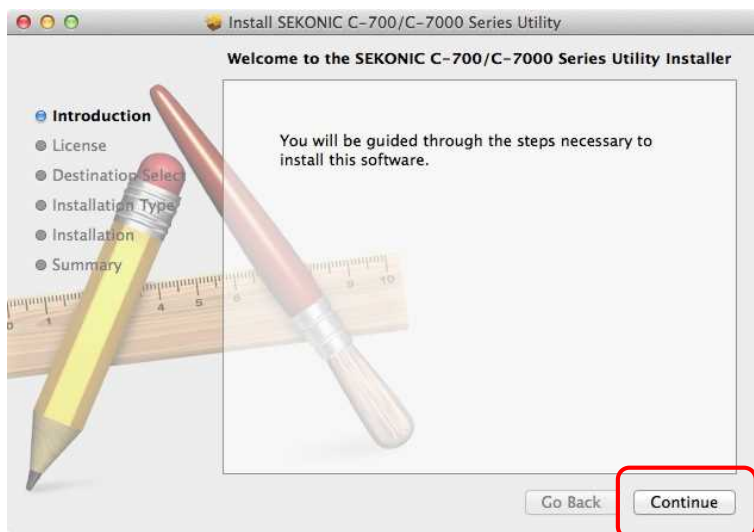


Figure 6 Installer screen on Macintosh

After the installer is started, click the “Continue” button according to the installer instructions and proceed through the installation process.

## 5.5 How to uninstall this software (from Macintosh)



Figure 7 Application folder

Open the “SEKONIC” folder in the “Application” folder. In the “SEKONIC” folder, open “C700\_C7000Series,” then open “Uninstaller” and double-click “UninstallC700C7000Utility.”



Figure 8 UninstallC700C7000Utility icon

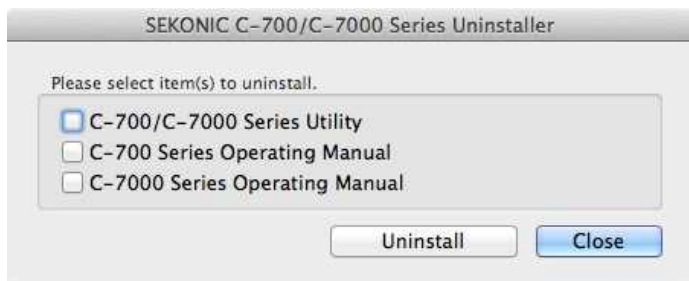


Figure 9 Uninstaller screen

Click the checkbox(es) located to the left of item(s) you want to uninstall and click the “Uninstall” button.

If all items have been uninstalled and “UninstallC700C7000Utility” has become unnecessary, open the “SEKONIC” folder in the “Application” folder, select the “C700\_C7000Series” folder and drag and drop it into “Trash.”

## 6. Connecting to SPECTROMASTER

### 6.1 How to connect to SPECTROMASTER



#### NOTICE

Please prepare a USB cable before using this software.  
USB cables are not supplied with this product.  
Please use a USB A male to mini-B male cable.

1. Connect the USB cable to the computer.
2. Check that the power to SPECTROMASTER is turned off.
3. Connect the USB cable to SPECTROMASTER.
4. Turn on the power to SPECTROMASTER.
5. Start this software.

When connection to SPECTROMASTER is completed, a screen as shown in Figure 10 appears.

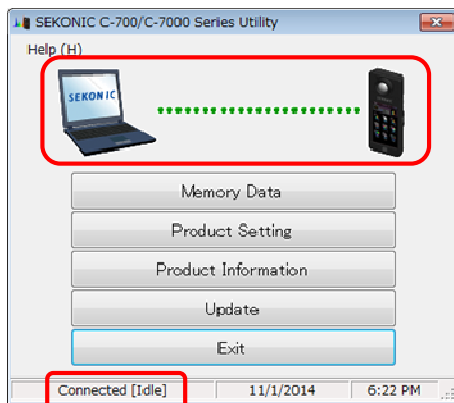


Figure 10 Connection status (idling)



#### NOTICE

- If the process shown in Section 0 is not followed, communication errors may occur.
- When this software is in operation, do not remove the USB cable with the SPECTROMASTER power turned on. Otherwise, the software may not work correctly even when the USB cable is reconnected.



If the USB cable is not connected correctly or if the SPECTROMASTER power is not turned on, a screen as shown in Figure 11 appears.

In that case, check SPECTROMASTER and the connection of the USB cable.

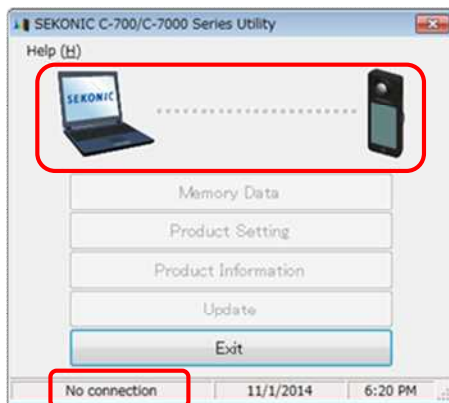


Figure 11 Unconnected status

If SPECTROMASTER is in connection but in operation and error, screens as shown in Figure 12 to Figure 14 may appear. In that case, please refer to the SPECTROMASTER Operating Manual for actions to take.



Figure 12 Connection status (busy)

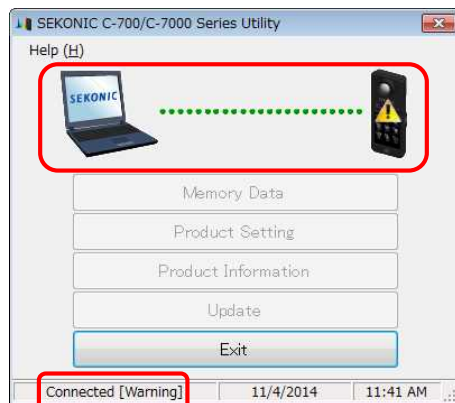


Figure 13 Connection status (warning)

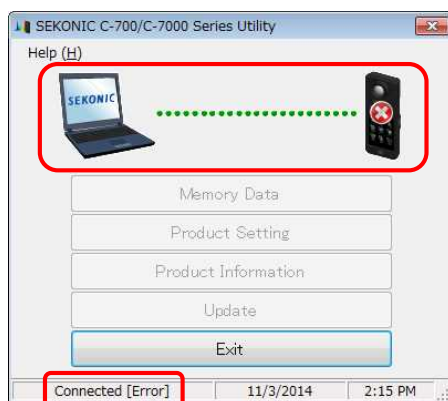


Figure 14 Connection status (error)

### NOTICE

If any of the screens shown in Figure 11 to 14 appears, or if a communication error has occurred, exit this software at once, reconnect the USB cable and restart this software according to the procedures shown in Section 0. ( ➡ Page 16)

## 6.2 How to disconnect from SPECTROMASTER

1. Exit this software.
2. Turn off the power to SPECTROMASTER.
3. Disconnect the USB cable connected to SPECTROMASTER.
4. Disconnect the USB cable connected to the computer.



Close the USB connection terminal cover on SPECTROMASTER properly after use.

## 7. Operation on each screen

### 7.1 Main screen

A main menu as shown in Figure 15 appears after starting this software according to the procedures shown in Section 0.

1. “Memory Data” button

Displays the “7.4 Memory Data Management screen” ( ➡ Page 35).

2. “Product Setting” button

Displays the “7.3 Product Setting screen” ( ➡ Page 24).

3. “Product Information” button

Displays the “7.2 Product Information screen” ( ➡ Page 23).

4. “Update” button

Displays the “7.6 Update screen” ( ➡ Page 45).

5. “Exit” button

Exits this software.

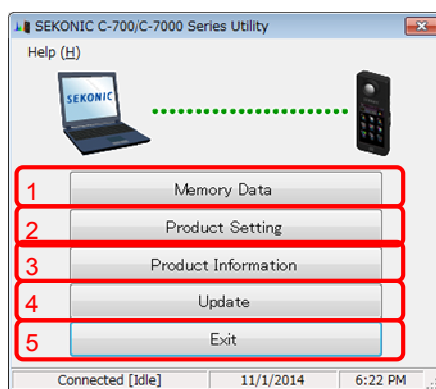


Figure 15 Main screen

## 7.1.1 Menus

“Software Guide” and “About This Utility” are provided as menus.

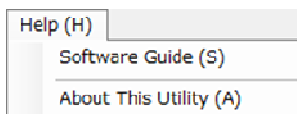


Figure 16 Menu (on Windows)



Figure 17 Menu (on Macintosh)

### 1. “Software Guide”

This displays the Software Guide (this document) for this software.

### 2. “About This Utility”

This displays the “7.1.2 About This Utility screen ( ➡ Page 22).

## 7.1.2 About This Utility screen

This screen displays the version information of this software.

The following figure shows the initial version information. It may differ from the latest version information.



Figure 18 About This Utility screen (on Windows)

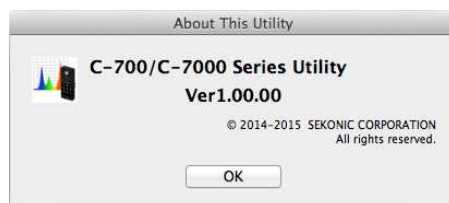


Figure 19 About This Utility screen (on Macintosh)

## 7.2 Product Information screen

This screen displays information on the SPECTROMASTER unit. The contents displayed change according to the SPECTROMASTER information and usage conditions.

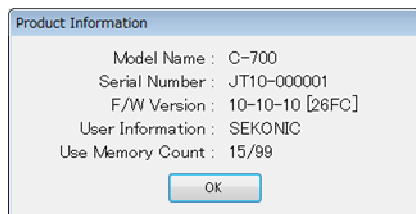


Figure 20 Product Information screen [C-700]

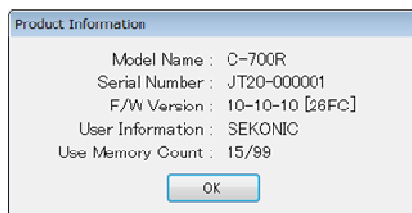


Figure 21 Product Information screen [C-700R]

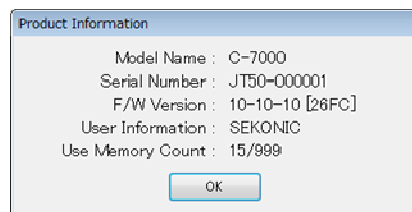


Figure 22 Product Information screen [C-7000]

## 7.3 Product Setting screen

This screen displays setting items for measurements to be performed by SPECTROMASTER.

Clicking the “OK” button after changing any of the setting items sends all of the setting changes in a batch to SPECTROMASTER and brings you back to the main screen. Clicking the “Cancel” button does nothing but bring you back to the main screen. (Figure 23)

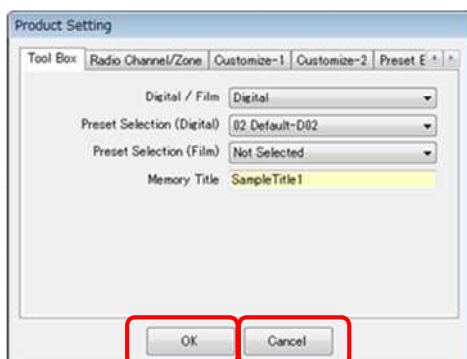


Figure 23 Product Setting screen

The setting items to be displayed vary with the connected model. For contents of the setting items, please refer to the SPECTROMASTER Operating Manual.

Table 2 List of tab names displayed on Product Setting screen

Model	Tab name	Page
C-700/C-700R	Tool Box	➡ Page 25
	Radio Channel Zone [C-700R]	➡ Page 25
	Customize-1	➡ Page 26
	Customize-2	➡ Page 26
	Preset Editing (Digital)	➡ Page 27
	Preset Editing (Film)	➡ Page 27
	Hardware Setting	➡ Page 28
	Initialize	➡ Page 33
C-7000	Tool Box	➡ Page 29
	Customize	➡ Page 29
	Preset Editing	➡ Page 30
	Hardware Setting	➡ Page 32
	Initialize	➡ Page 33



## 7.3.1 Product Setting screen [C-700/C-700R]

### 1. Tool Box

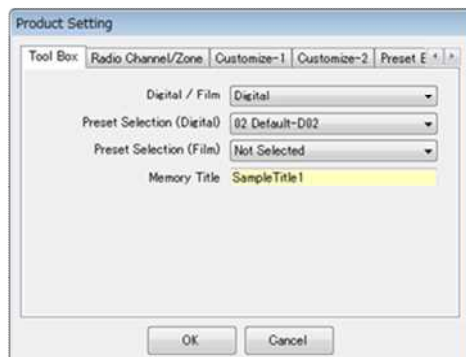


Figure 24 Product Setting / Tool Box

### 2. Radio Channel/Zone [C-700R]

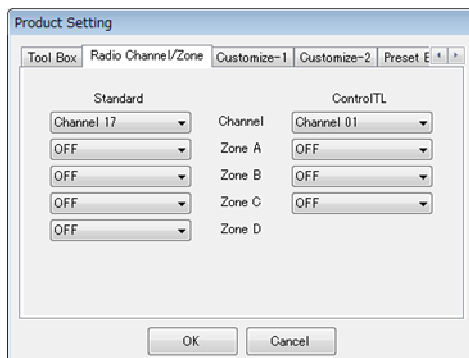


Figure 25 Product Setting / Radio Channel

### 3. Customize-1

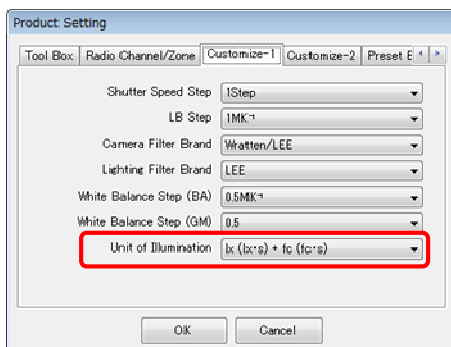


Figure 26 Product Setting / Customize-1



The setting item "Unit of Illumination" is not displayed for SPECTROMASTER models that do not use "fc (fc·s)" due to legal regulations in the relevant country. In addition, the inside of ( ) is a unit showing a light exposure.

### 4. Customize-2

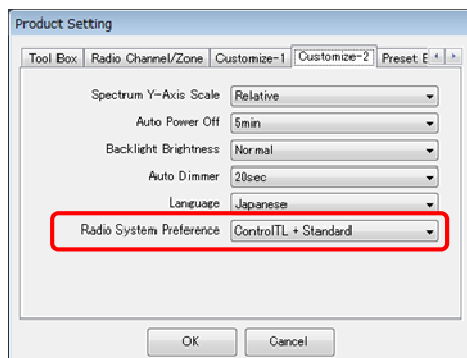


Figure 27 Product Setting / Customize-2



[C-700R]

The setting item "Radio System Preference" is provided only for C-700R.

## 5. Preset Editing (Digital / Film)

This tab displays the settings selected for the setting item “Preset No.”

To edit the settings, click the “Edit...” button and open the “Preset Editing” dialog.

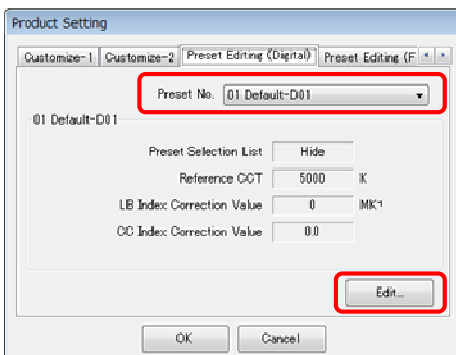


Figure 28 Product Setting / Preset Editing  
(Digital)

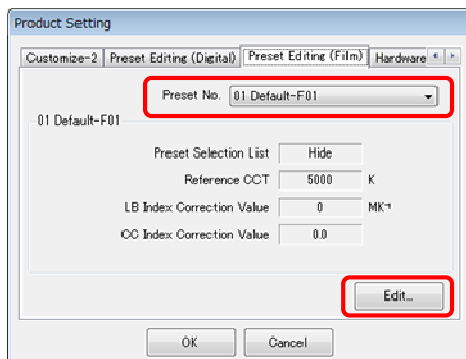


Figure 29 Product Setting / Preset Editing  
(Film)

## 6. Preset Editing dialog

The setting item “Preset Selection List” is usually displayed such that it allows changes, as shown with (a).

However, an item (“Default-D02” in this case) selected in the setting item “Preset Selection” in “Figure 24 Product Setting / Tool Box” (➡ Page 25) is displayed such that it does not allow any changes, as shown with (b).

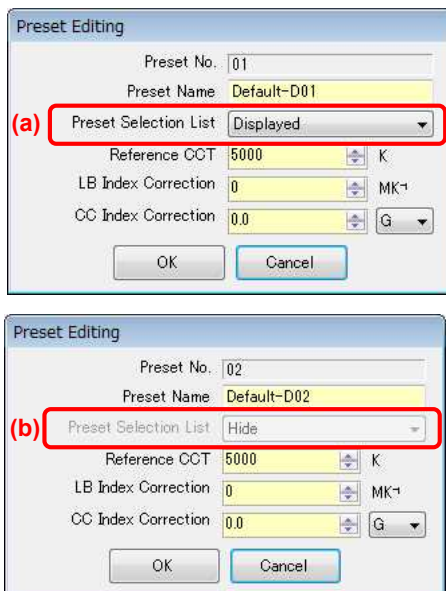


Figure 30 Product Setting / Preset Editing Dialog

## 7. Hardware Setting

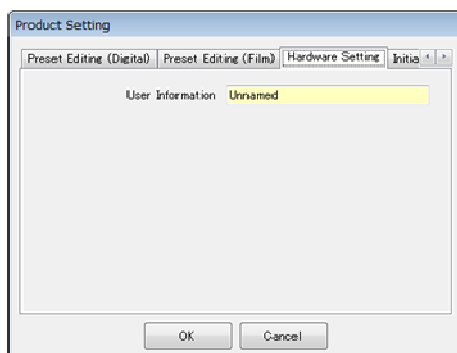


Figure 31 Product Setting / Hardware Setting

## 7.3.2 Product Setting screen [C-7000]

### 1. Tool Box

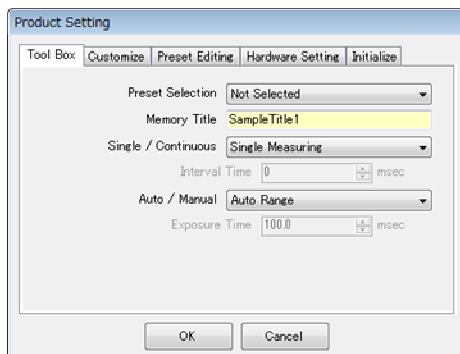


Figure 32 Product Setting / Tool Box

### 2. Customize

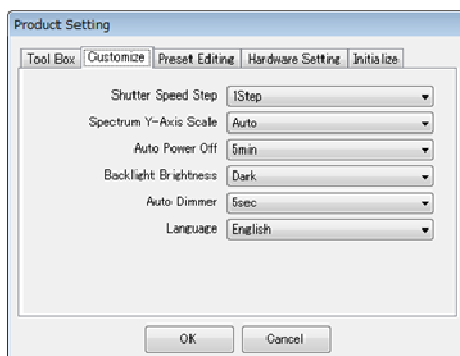
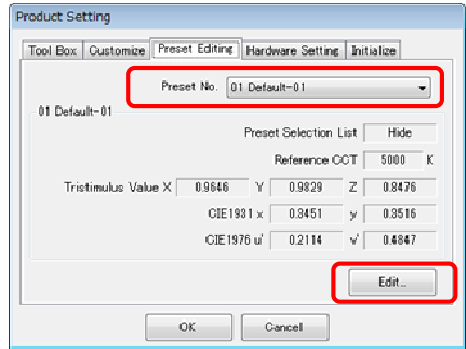


Figure 33 Product Setting / Customize

### 3. Preset Editing

This tab displays the settings selected for the setting item “Preset No.”

To edit the displayed settings, click the “Edit...” button and open the “Preset Editing” dialog.



There are three ways to edit the preset values, as shown below:

Figure 34 Product Setting / Preset Editing

- “4. Preset Editing dialog (Enter the Numeric)” ( ➡ Page 30)
- “5. Preset Editing dialog (Input from Memory)” ( ➡ Page 31)
- “7. Preset Editing dialog (Input as Measured)” ( ➡ Page 32)



Though the setting item “Preset Selection List” shown in 4, 5, and 7 basically allows changes, no change is allowed when a selection is preset for “Preset Selection” in “Tool Box.” For details, please refer to “6. Preset Editing dialog” ( ➡ Page 28).

### 4. Preset Editing dialog (Enter the Numeric)

You can specify a preset value by entering the temperature in the setting item “Reference CCT.”

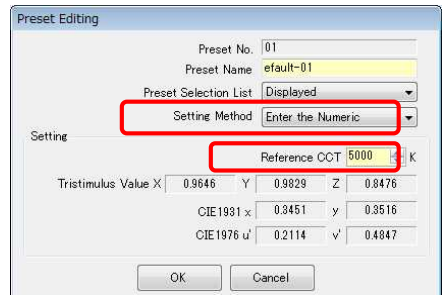


Figure 35 Preset Editing dialog (Enter the Numeric)

5. Preset Editing dialog (Input from Memory)

To specify preset values, click the “Memory...” button and select memory data in “6. Preset Editing / Memory Select dialog

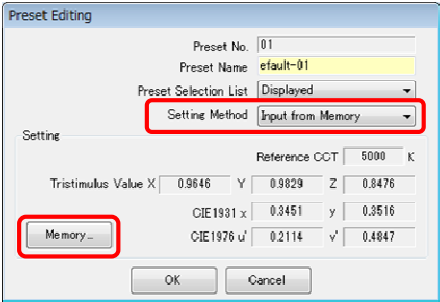


Figure 36 Preset Editing dialog  
(Input from Memory)

6. Preset Editing / Memory Select dialog

To select memory data, select a relevant memory title from "Memory Title" located at the top left of the screen. Then, select memory data from "Memory Data" located at the top right of the screen and click the “OK” button.

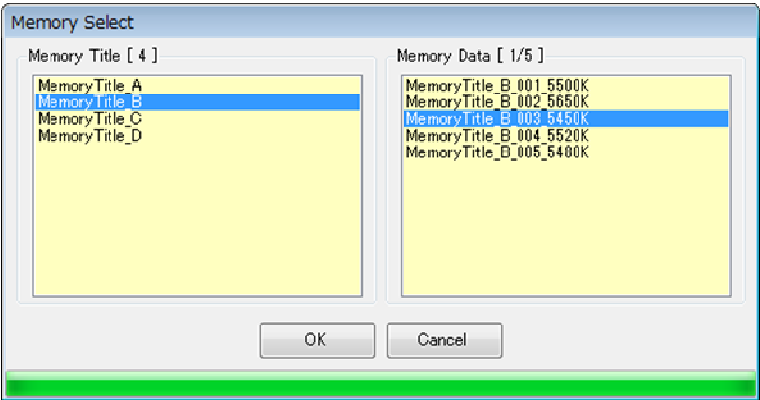


Figure 37 Preset Editing / Memory Select dialog

## 7. Preset Editing dialog (Input as Measured)

To specify preset values, click the “Measuring” button so that measurement results are set as the preset values.

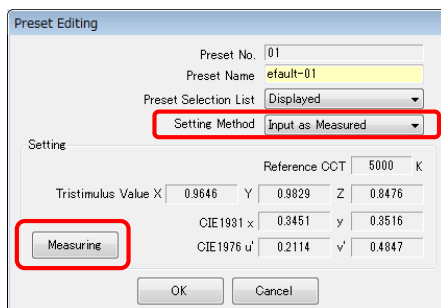


Figure 38 Preset Editing dialog (Input as Measured)

## 8. Hardware setting

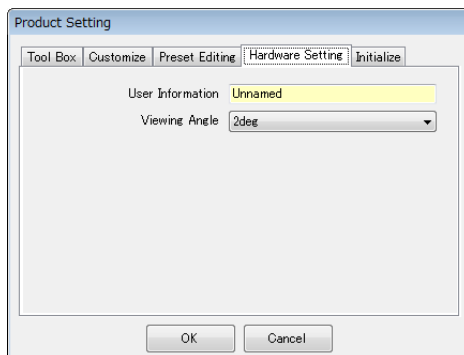


Figure 39 Product Setting / Hardware Setting



### 7.3.3 Product Setting screen - Initialize

Each of the setting items can be initialized by clicking the “Customize Editing” button shown with (a) or the “Factory Setting” button shown with (b) on this screen.

The contents of initialization varies with the buttons and connected model.

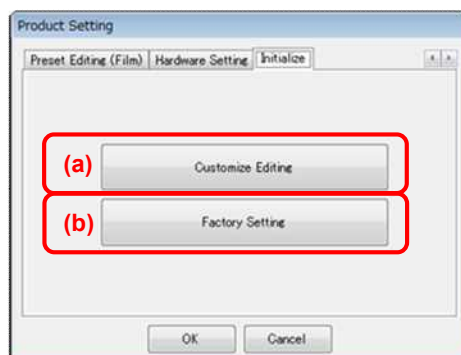


Figure 40 Product Setting / Initialize

#### 1. Contents of initialization executed by “Customize Editing”

Customization settings items related to them are initialized.

The “Confirmation” screen appears after clicking the “Customize Editing” button. Upon clicking the “Yes” button, the contents displayed on the Product Setting screen and values of each setting item for SPECTROMASTER are initialized.

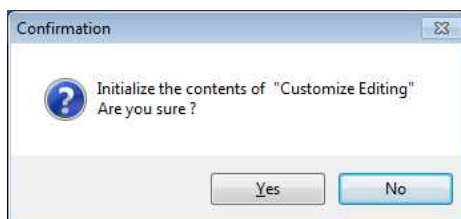


Figure 41 Confirmation screen the “Customize Editing”

Table 3 Contents of initialization

Model	Item	Initialization target screen and setting Item
C-700/C-700R	Product Setting	Tool Box (Preset Selection (Digital/Film))
		Customize-1
		Customize-2
C-7000	Product Setting	Tool Box (Preset Selection)
		Customize

## 2. Contents of initialization executed by “Factory Setting”

All setting items of SPECTROMASTER are initialized to the factory default settings.  
The memory data are also initialized.

The “Confirmation” screen appears after clicking the “Factory Setting” button. Upon clicking the “Yes” button, the contents displayed on the Product Setting screen and values of each setting item for SPECTROMASTER are initialized.

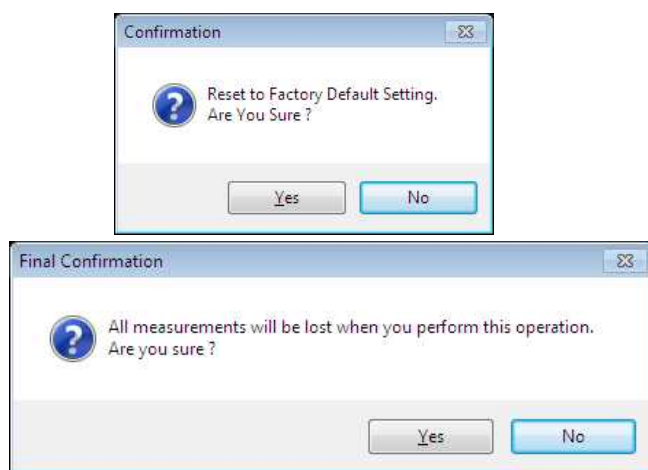


Figure 42 Confirmation screen the “Factory Setting”



Once clicking the “Yes” button on each Confirmation screen to initialize, it is impossible to return to the previous setting even if clicking the “Cancel” button on the Setting screen.

## 7.4 Memory Data Management screen

The Memory Data Management screen is used to save measurement data held by SPECTROMASTER as files and to display (preview) and delete the measurement data. Besides saving data as CSV files, various graphs can be saved as image files. Graphs to be displayed and graphs that can be saved as files vary with the connected model.

Table 4 Corresponding graphs by model

Connected model	Graphs that can be saved as image files
C-700/C-700R	Spectral Distribution, CRI, White Balance
C-7000	Spectral Distribution, CRI, CIE1931 Chromaticity Diagram, CIE1976 Chromaticity Diagram

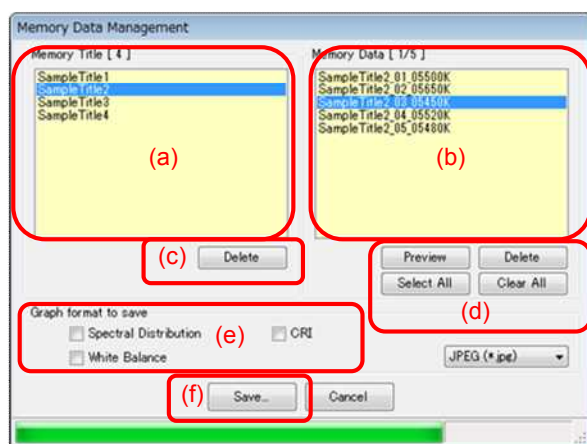


Figure 43 Memory Data Management [C-700/C-700R]

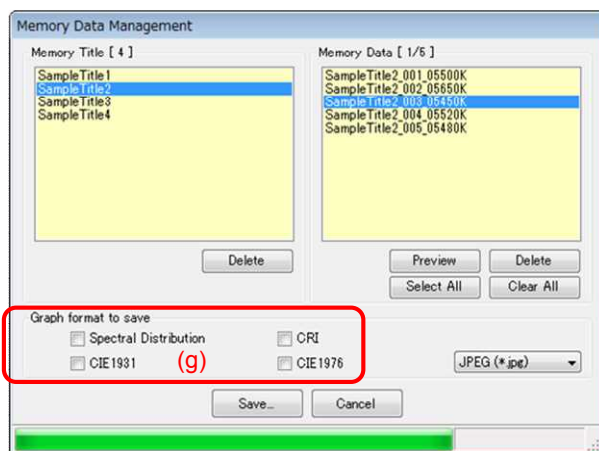


Figure 44 Memory Data Management [C-7000]

To manage (save, display or delete) memory data in SPECTROMASTER, select a relevant memory title from "Memory Title" shown with (a) so that all memory data that belong under the selected memory title are displayed in "Memory Data" shown with (b).

#### 1. "Delete" a memory title

By selecting an item in "Memory Title" and clicking the "Delete" button shown with (c), the selected memory title and all memory data related to the selected title are deleted.

#### 2. "Preview" memory data

By selecting an item in "Memory Data" and clicking the "Preview" button shown with (d), contents of the selected memory data are displayed on the "7.5 Preview screen" ( ➡ Page 39). When multiple items in the list are selected, the "Preview" button cannot be clicked.

### 3. "Delete" memory data

By selecting an item in "Memory Data" and clicking the "Delete" button shown with (d), the selected memory data are deleted. When multiple items in the list are selected, the "Delete" button cannot be clicked.

### 4. "Select All" memory data

By clicking the "Select All" button shown with (d), all items in "Memory Data" are selected.

### 5. "Clear All" memory data

By clicking the "Clear All" button shown with (d), the selection of all items in "Memory Data" is cleared.

### 6. "Save" memory data

By selecting item(s) (multiple selections allowed) in "Memory Data" and clicking the "Save" button shown with (f), the selected memory data are saved in a file. If a file of the same name already exists, the existing file is overwritten.

The memory data are saved in the CSV format. If item(s) shown with (e) in Figure 43 or item(s) shown with (g) in Figure 44 have check mark(s), relevant graph image(s) are saved. The names of files to be saved are shown in “Table 5 File names of memory data to be saved .”

(For CSV-format data fields, please refer to “8. Appendix” ( ➡ Page 52).)

Table 5 File names of memory data to be saved

Item to be saved	Saving format	File name used for saving (*2)
Memory Data	Text format (CSV format) (*1)	MemoryDataName . csv
Spectral Distribution graph	Image file (Select from Jpeg, Bmp or Png format)	MemoryDataName_SpectralDistribution . ***
CRI graph		MemoryDataName_ColorRendering . ***
White Balance [C-700/C-700R]		MemoryDataName_WhiteBalance . ***
CIE1931 Chromaticity Diagram [C-7000]		MemoryDataName_CIE1931 . ***
CIE1976 Chromaticity Diagram [C-7000]		MemoryDataName_CIE1976 . ***

\*1 Character code of a CSV format is “with UFT-8 BOM.”

\*2 The “MemoryDataName” refers to the names displayed at (b) in Figure 43  
( ➡ Page 35).

The image file extension (\*\*\*) refers to the extension (jpg, bmp, png) of each image format.

## 7.5 Preview screen

This screen, which is called from the “7.4 Memory Data Management screen” ( ➡ Page 35), displays memory data.

There are multiple preview formats, and they can be switched using tabs. Graphs that are displayed can be saved individually in files and can also be copied to a clipboard.

### 7.5.1 Menus

The following menus are provided for each Preview format and are used to save graphs individually:

1. Save as

Saves graph images in files.

2. Copy to clipboard

Copies graph images to a clipboard.

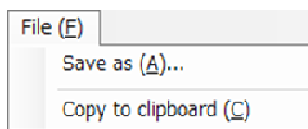


Figure 45 Preview screen / Menu (on Windows)



Figure 46 Preview screen / Menu (on Macintosh)

## 7.5.2 Preview / Spectral Distribution

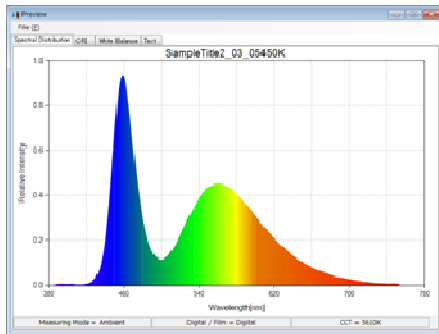


Figure 47 Spectral Distribution

[C-700/C-700R]

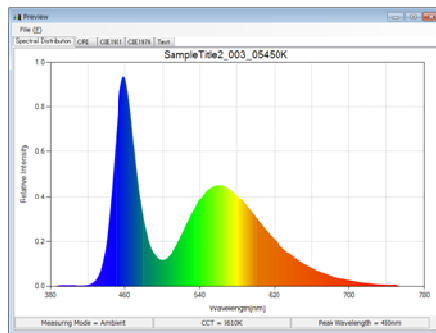


Figure 48 Spectral Distribution

[C-7000]

The Preview / Spectral Distribution screens are common to all models (excludes tab display and status bar).

## 7.5.3 Preview / CRI

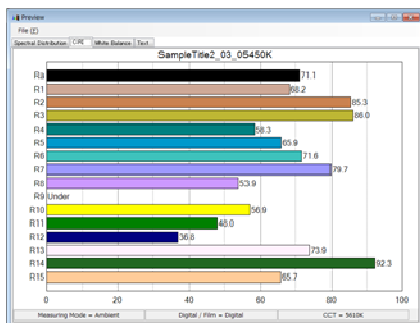


Figure 49 CRI [C-700/C-700R]

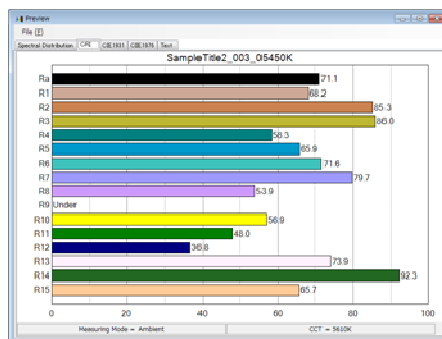


Figure 50 CRI [C-7000]

The Preview / CRI screens are common to all models (excludes tab display).



## 7.5.4 Preview / White balance [C-700/C-700R]

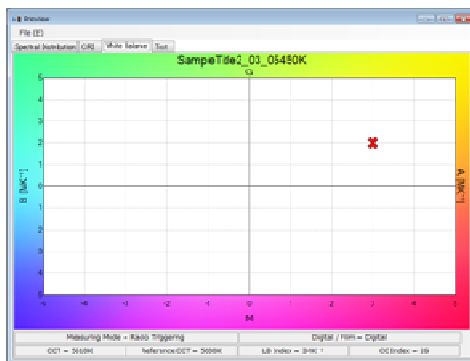


Figure 51 White Balance [C-700/C-700R]

## 7.5.5 Preview / CIE 1931 Chromaticity Diagram [C-7000]

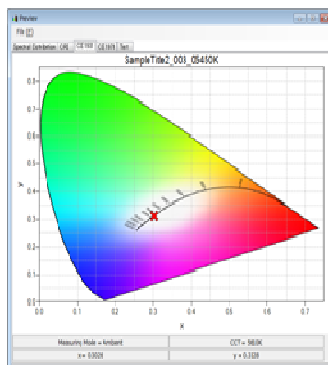


Figure 52 CIE1931Chromaticity Diagram [C-7000]

## 7.5.6 Preview / CIE1976 Chromaticity Diagram [C-7000]

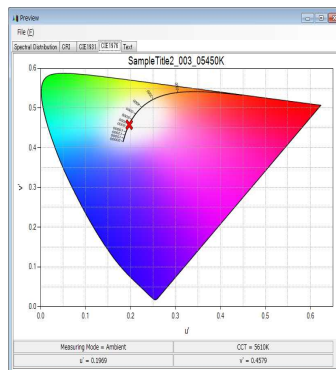


Figure 53 CIE1976 Chromaticity Diagram [C-7000]

7.5.7 Preview / Text

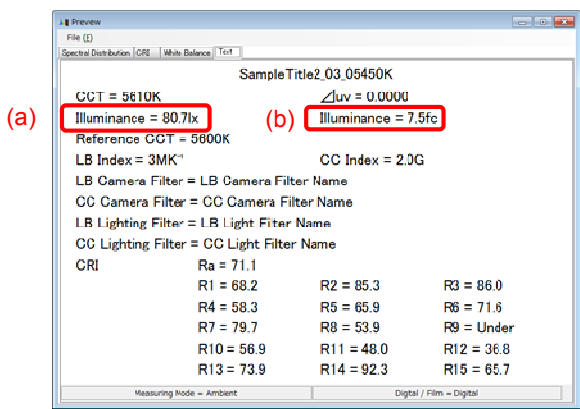



Figure 54 Text [C-700/C-700R]

(a) and (b) change the contents of a display by a setup on the main part side “Unit of Illumination”, and “ Measuring Mode”

The corresponding item in a 《memory data file》 (CSV-format) changes similarly.

Table 6 The contents of a display of illumination (light exposure)[C-700/C-700R]

		Unit of Illumination setup					
		lx (lx·s)		fc (fc·s)		lx (lx·s) + fc (fc·s)	
Preview / Text		(a)	(b)	(a)	(b)	(a)	(b)
CSV-format field No		8	9	8	9	8	9
Measuring Mode	Ambient	Illuminance [lx]	(Blank)	Illuminance [fc]	(Blank)	Illuminance [lx]	Illuminance [fc]
	Except Ambient	Exposure [lx·s]	(Blank)	Exposure [fc·s]	(Blank)	Exposure [lx·s]	Exposure [fc·s]

NOTICE

The item "Illuminance [fc]" and "Exposure [fc·s]", in the case of the model the body does not use "fc (fc·s)" by the regulations of each country, it does not display.

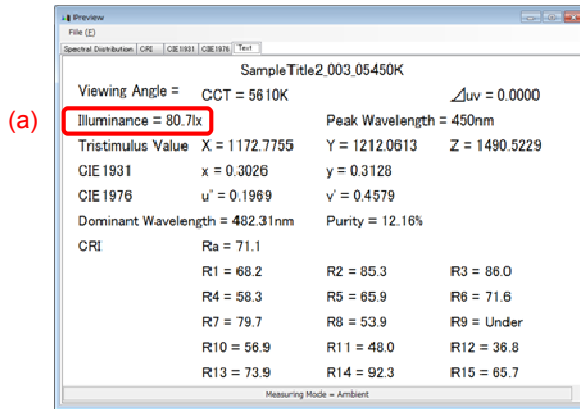


Figure 55 Text [C-7000]

(a) change the contents of a display by a setup on the main part side “Measuring Mode”

The corresponding item in a 《memory data file》 (CSV-format) changes similarly.

Table 7 The contents of a display of illumination (light exposure)[C-7000]

Preview / Text		(a)
CSV-format field No		8
Measuring Mode	Ambient	Illuminance [lx]
	Except Ambient	Exposure [lx·s]

## 7.6 Update screen

On the Update screen, you can compare the version information of each of the following items with the update information listed on our website, and update any of the items you are using to the latest versions:

- C-700 Series F/W
- C-7000 Series F/W
- C-700 Series Operating Manual
- C-7000 Series Operating Manual
- C-700/C-7000 Series Utility (this software)



To acquire update information, a computer using this software needs to be connected to the Internet and capable of viewing our website ([www.sekonic.co.jp](http://www.sekonic.co.jp)).

If you need to set an HTTP proxy server to use a web browser, click the “Proxy Setting” button to open the “7.6.1 Proxy Setting” screen (➡ Page 50) and perform the same setting.

## 1. Update-1

Versions of installed items are displayed. Items that are not installed are displayed in grayed-out characters, as shown in the red frames in Figure 57.

By clicking the “Next >” button on the “Update-1” screen, the acquisition of the update information is started.

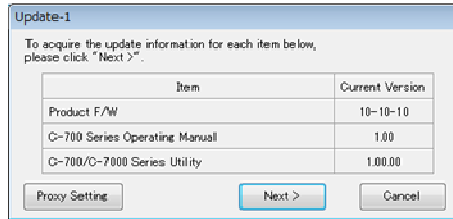


Figure 56 Update-1 [C-700/C-700R]

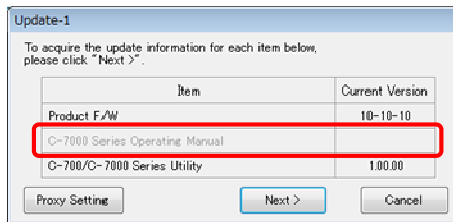


Figure 57 Update-1 [C-7000]

## 2. Update-2

After the acquisition of the update information is completed, click the “Next >” button.

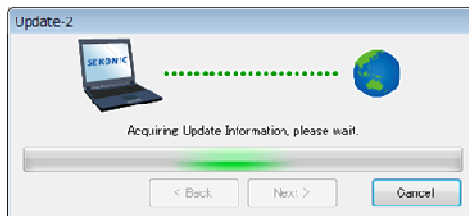


Figure 58 Update-2

3. Update-3

Items that can be updated are displayed. By clicking the “Update >” button, items that are checked are updated.

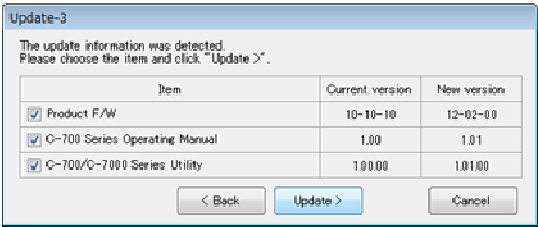


Figure 59 Update-3 [C-700/C-700R]

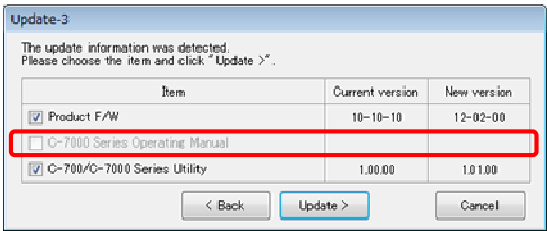


Figure 60 Update-3 [C-7000]

Items that do not require updating and items that are not installed are displayed in grayed-out characters, as shown in the red frames in Figure 60, because they are excluded from the updating.

4. Update-4

The update information is acquired and the update is performed sequentially for the items that are checked on the “Update-3” screen.

An ongoing acquisition process of the update information can be cancelled by clicking the “Cancel” button.

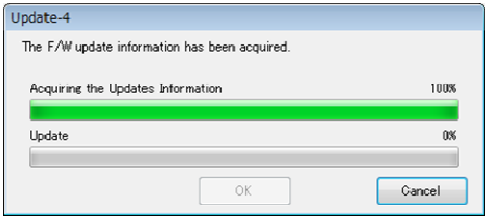


Figure 61 Update-4 (The F/W update information has been acquired)

The “Cancel” button is disabled during the update.

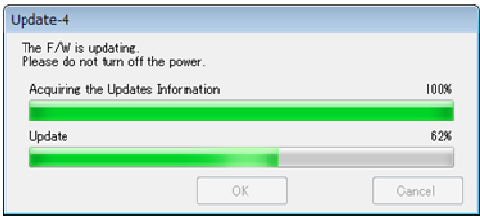


Figure 62 Update-4 (Update)

**⚠ CAUTION**

During the update of the SPECTROMASTER F/W, do not turn off the power to SPECTROMASTER or remove the USB cable. Otherwise, SPECTROMASTER may not work correctly.



After the update of the SPECTROMASTER F/W is completed, the meter is automatically turned off. Turn on the power of SPECTROMASTER to check the status.

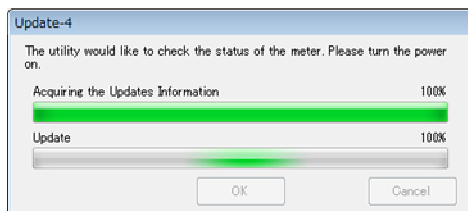


Figure 63 Update-4 (Update)

After the update of all items is completed, click the "OK" button.

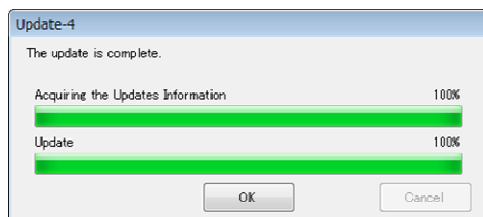


Figure 64 Update-4 (The update is complete)

# 7.6.1 Proxy Setting

This screen is used to set a proxy if it is needed for an updating process.

- 1. When connecting without using a proxy

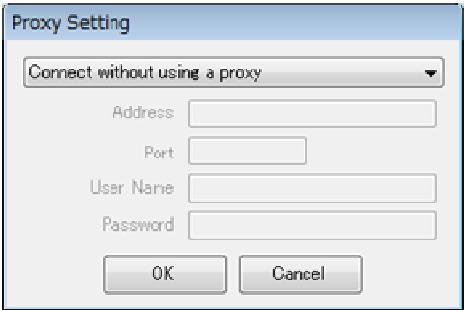


Figure 65 Proxy Setting-1

- 2. When connecting using the default proxy of the OS (Windows or OS X)

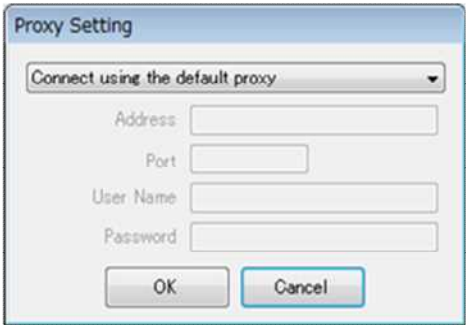


Figure 66 Proxy Setting-2

3. When connecting using a proxy set on this screen

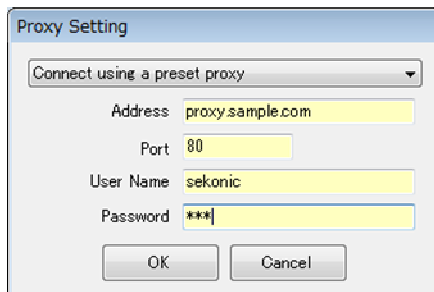
A screenshot of a 'Proxy Setting' dialog box. At the top, there is a dropdown menu with the text 'Connect using a preset proxy'. Below this, there are four input fields: 'Address' with the value 'proxy.sample.com', 'Port' with the value '80', 'User Name' with the value 'sekonic', and 'Password' with the value '\*\*\*'. At the bottom of the dialog, there are two buttons: 'OK' and 'Cancel'.

Figure 67 Proxy Setting-3



To change the settings on this screen, restart this application according to the following procedure:

- Step 1 Click the “OK” button on this screen to return to the “Update-1” screen.
- Step 2 Click the “Cancel” button on the “Update-1” screen to return to the “Main” screen.
- Step 3 Restart this application.

## 8. Appendix

### Memory data saving formats

For details on memory data, please refer to “7.4 Memory Data Management screen”

( ➡ Page 35).

Table 8 CSV-format fields ([C-700/C-700R])

Field No.	Field content	Remarks
1	Date Saved	
2	Title	Memory data name
3	-	Blank
4	Measuring Mode	
5	Digital/Film	
6	CCT [K]	
7	$\Delta uv$	
8	Illuminance (Exposure)-1	Please refer to "Table 6" ( ➡ Page 43)
9	Illuminance (Exposure)-2	
10	Reference CCT [K]	
11	LB Index [ $MK^{-1}$ ]	
12	LB Camera Filter	
13	LB Lighting Filter	
14	CC Index [M]/[G]	
15	CC Camera Filter	
16	CC Lighting Filter	
17	CRI Ra	
18	CRI R1	
-	-	
31	CRI R14	
32	CRI R15	

Table 9 CSV-format data field [C-7000]

Field No.	Field content	Remarks
1	Date Saved	
2	Title	Memory data name
3	-	Blank
4	Measuring Mode	
5	Viewing Angle [deg]	
6	CCT [K]	
7	$\Delta uv$	
8	Illuminance (Exposure)	Please refer to "Table 7" ( ➡ Page 44)
9	Peak Wavelength [nm]	
10	Tristimulus Value X	
11	Tristimulus Value Y	
12	Tristimulus Value Z	
13	CIE1931 x	
14	CIE1931 y	
15	CIE1976 u'	
16	CIE1976 v'	
17	Dominant Wavelength [nm]	
18	Purity [%]	
19	CRI Ra	
20	CRI R1	
-	-	
33	CRI R3	
34	CRI R4	
35	-	Blank
36	Spectral Data (380[nm])	5[nm]-step
37	Spectral Data (385[nm])	
-	-	
115	Spectral Data (775[nm])	
116	Spectral Data (780[nm])	
117	-	Blank
118	Spectral Data (380[nm])	1[nm]-step
119	Spectral Data (381[nm])	
-	-	
517	Spectral Data (779[nm])	
518	Spectral Data (780 [nm])	

# **SEKONIC CORPORATION**

7-24-14, OIZUMI-GAKUEN-CHO, NERIMA-KU, TOKYO 178-8686 JAPAN

TEL:+81(0)3-3978-2335 FAX:+81(0)3-3978-5229

<http://www.sekonic.com/>

JT109761-D\_en-01