



Z-Finder with Mounting Kit for C300-C500

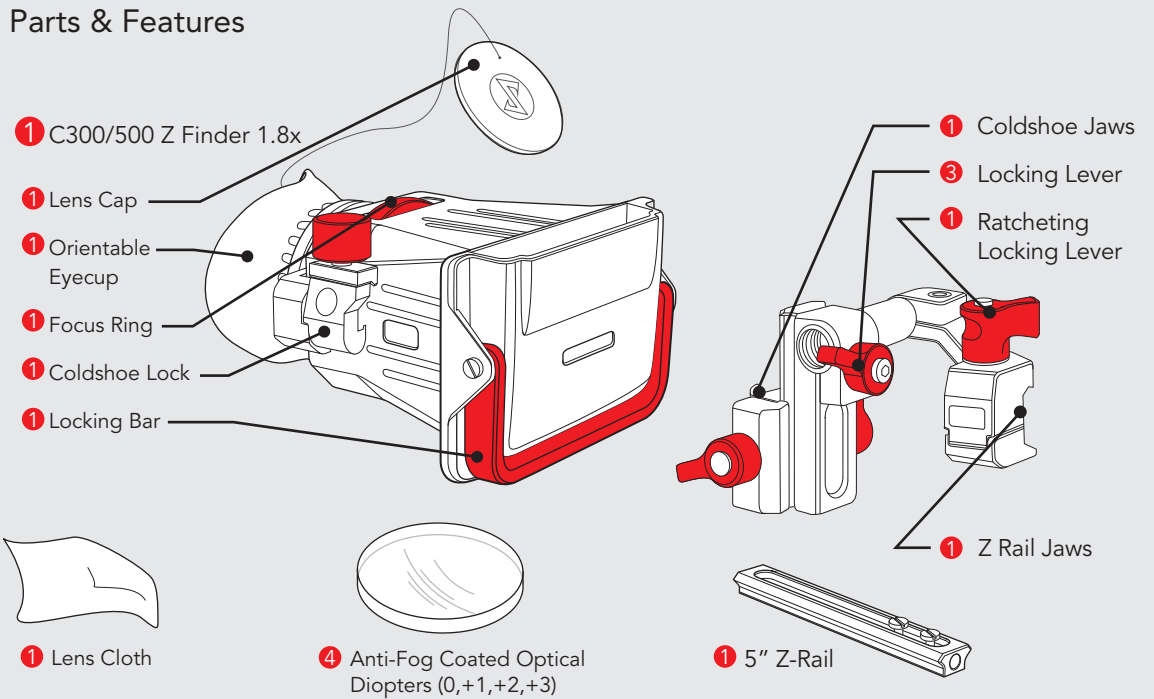
The Mounting Kit for the C300/C500 Z-Finder allows you to position the LCD screen forward, and off to the side in a proper position for shoulder mounted shooting. The Mounting Kit attaches to a Z-Rail mount and will allow for vertical and horizontal adjustment of the Z-Finder.

This mounting kit works with the C300/C500 Helmet and handle as a unified system. Either the C300/C500 Helmet Tapped Handle Kit or the C300/C500 Helmet Coldshoe Handle Kit is required to use this kit.

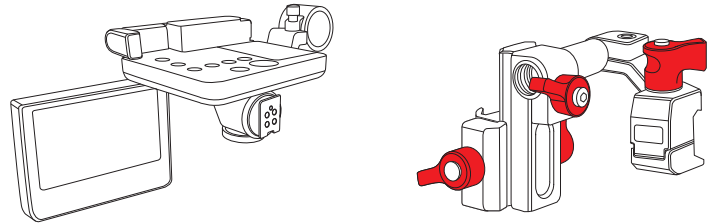


Check out our tutorial videos at zacuto.com

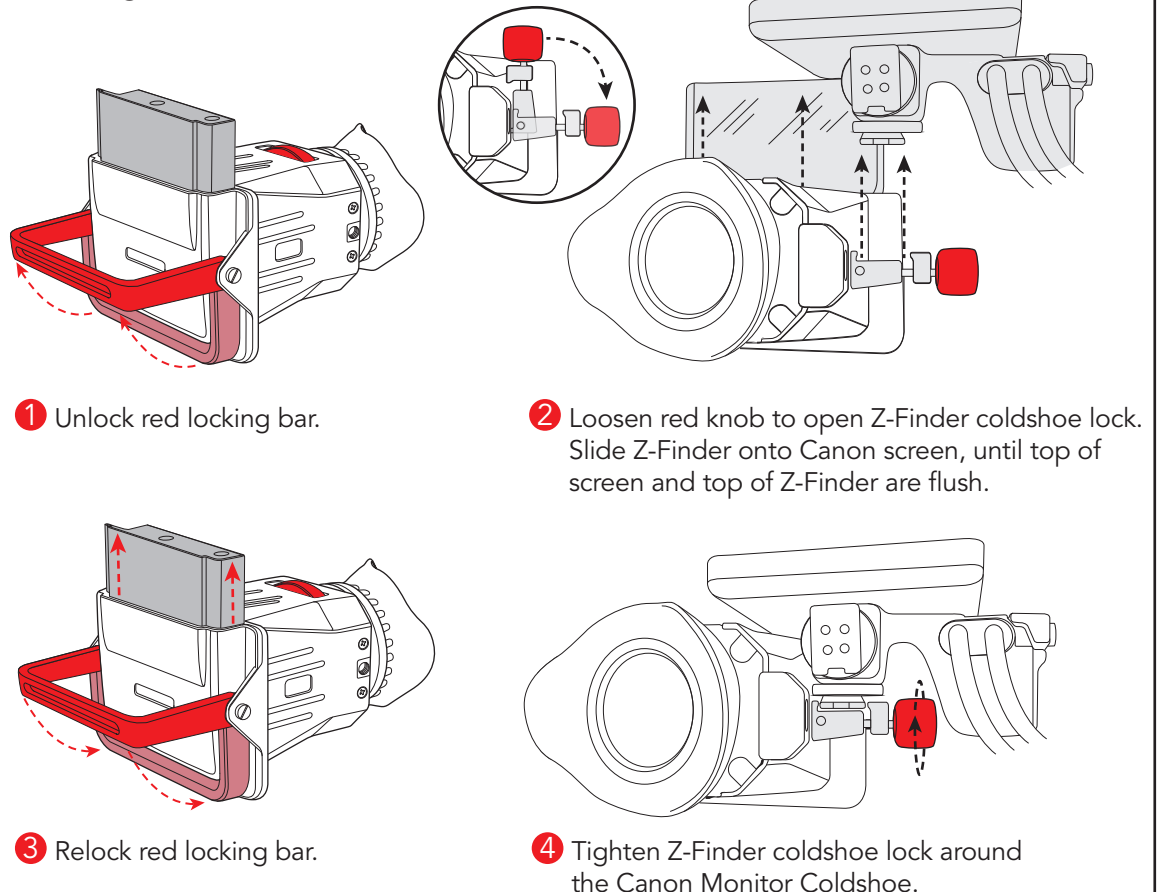
Parts & Features



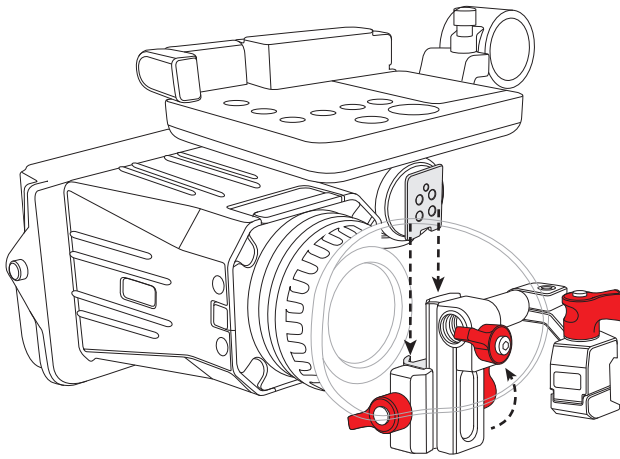
Before assembling Z-Finder, orient your Canon Monitor and mounting kit as shown to the right.



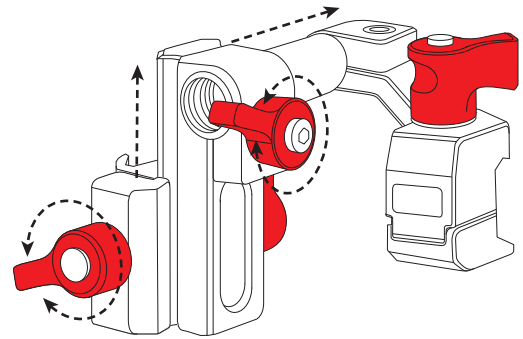
Attaching Z-Finder to Canon Monitor



Attaching Z-Finder and Monitor to Mounting Kit



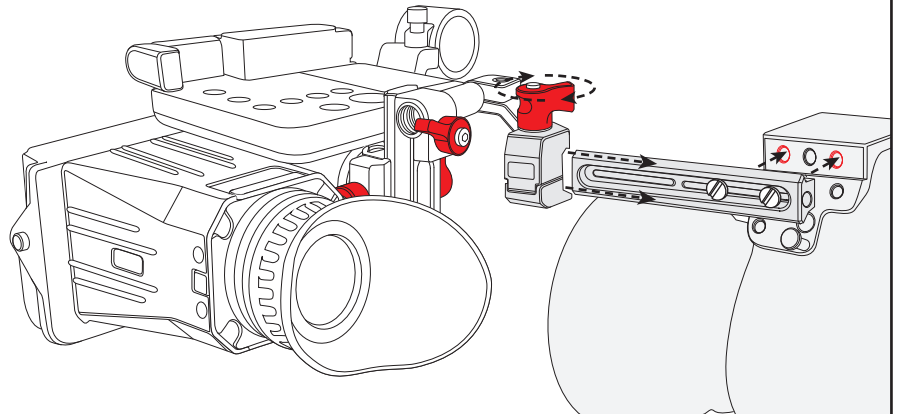
- 1 Slide monitor coldshoe into the mounting kit's coldshoe slot. Tighten inside lever when securely in place.



- 2 Mounting kit positioning is adjustable with the two levers highlighted above.

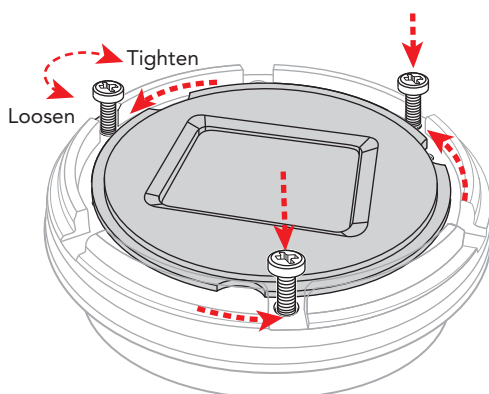
Mounting Z-Finder, Monitor and Mounting kit to Helmet

- 1 Mount 5" Z-Rail to the left side of the helmet.
- 2 Unlock mounting kit z-rail jaws. Slide mounting kit with Z-Finder and monitor onto Z-Rail. Adjust for user comfort before locking mounting kit in place.



Inserting Diopters

If your LCD is not in focus, after fully extending with focus ring, you will need to add a diopter. Take out the already inserted 0 Anti-Fog screen, which is already in for protection. We recommend starting with the +1, if the LCD is still not in focus then swap out the +1 for a +2 or +3 until focus is attained. (A +4 and -1 Diopter are also sold separately.)



- 1 Loosen screws and rotate sun mask until all three notches align with screws.
- 2 Remove sun mask by lifting up and insert your desired diopter, convex side down.
- 3 Place sun mask back on top of diopter. Rotate sun mask to original position and tighten screws.

The diopter wheel is used for specific focus tuning. Use letters in menu screens to focus in on.

