

QUICKSTART

moVI M3

This quickstart guide is designed for a first time user. Please refer to the full user guide for more detailed information.

A. CHARGE & INSTALL BATTERY



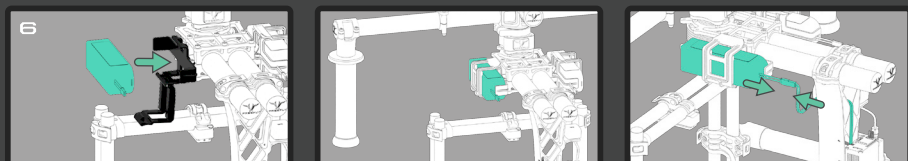
1. Read battery / charging safety info (refer to full user guide).

2. Plug Freefly charger into wall.

3. Set charger to "LiPo" and "3A" settings.

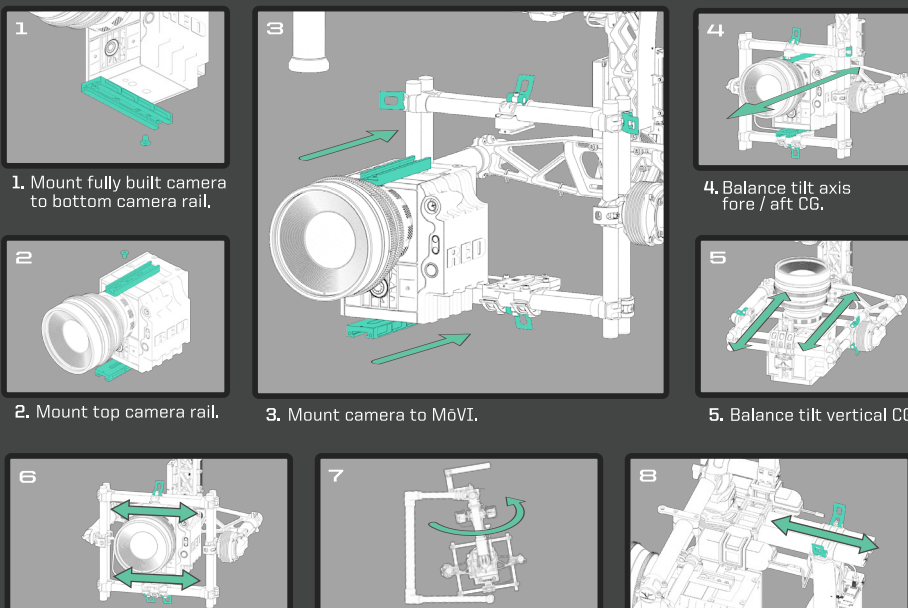
4. Connect charge leads to charger.

5. Connect battery balance lead to charger.



6. Install battery into MoVI (3 steps).

B. INSTALL & BALANCE CAMERA



1. Mount fully built camera to bottom camera rail.

2. Mount top camera rail.

3. Mount camera to MoVI.

4. Balance tilt axis fore / aft CG.

5. Balance tilt vertical CG.

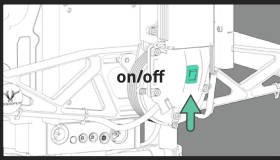
6. Balance roll axis CG.

7. Check balance for pan axis CG.

8. Balance pan axis CG.

C. TUNING (AUTO OR MANUAL)

AUTO TUNING



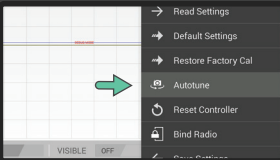
1. Turn MoVI power switch on.



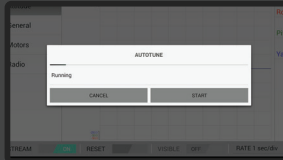
2. Connect to the M6VI via Bluetooth™ (tablet, laptop).



3. Locate and press the 'System' tab.

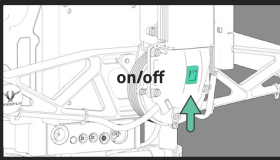


4. In the 'System' drop down, locate and press 'Autotune'.



5. Wait 1-2 minutes as your M6VI automatically tunes itself.

MANUAL TUNING



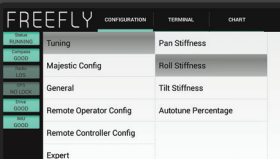
1. Turn MoVI power switch on.



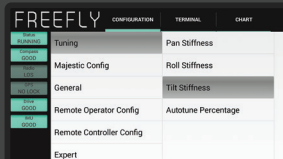
2. Connect to the M6VI via Bluetooth™ (tablet, laptop).



3. Under the 'Pan Stiffness' tab of the GUI, set the stiffness as high as possible.



4. Under the 'Roll Stiffness' tab of the GUI, set the stiffness as high as possible.



5. Under the 'Tilt Stiffness' tab of the GUI, set the stiffness as high as possible.

* DO NOT RELY ON THE SETTINGS OUT OF THE BOX TO ACHIEVE BEST RESULTS. FOR BEST PERFORMANCE IT IS IMPERATIVE THAT YOU SET THE STIFFNESS SETTINGS AS HIGH AS POSSIBLE.