

OSMO POCKET

Charging Case

User Guide

使用说明

使用説明

ユーザーガイド

사용자 가이드

Bedienungsanleitung

Guía de usuario

Guide de l'utilisateur

Guida dell'utente

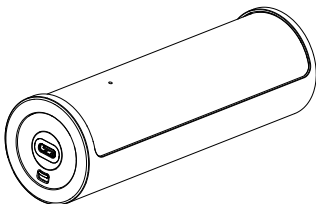
Gebruiksaanwijzing

Manual do utilizador

Guia do usuário

Руководство пользователя

v1.0 2019.01



Disclaimer and Warning

Thank you for purchasing the OSMO POCKET™ Charging Case (hereinafter referred to as 'Product'). Read this disclaimer carefully before using this Product. By using this Product, you hereby agree to this disclaimer and signify that you have read it fully. Please use this Product in strict accordance with the manual and be sure to pay attention to the Warning. SZ DJI OSMO TECHNOLOGY CO., LTD. And its affiliated companies assume no liability for damage(s) or injuries incurred directly or indirectly from improper use of this Product. Misuse includes, but is not limited to, using unapproved chargers, charging unapproved batteries, short-circuiting, overheating, modifying the Product, or touching the terminals with skin or metal.

OSMO is a trademark of SZ DJI OSMO TECHNOLOGY CO., LTD. (abbreviated as "DJI OSMO") and its affiliated companies. Names of products, brands, etc., appearing in this manual are trademarks or registered trademarks of their respective owner companies. This Product and manual are copyrighted by DJI OSMO with all rights reserved. No part of this Product or manual shall be reproduced in any form without the prior written consent or authorization of DJI OSMO.

This disclaimer is produced in various languages. In the event of divergence among different versions, the Chinese version shall prevail when the Product in question is purchased in China, and English version shall prevail when the Product in question is purchased in any other region.

Warning

1. The Charging Case is only compatible with battery chargers listed in Specifications.
2. The Charging Case is only compatible with Osmo Pocket. DO NOT attempt to use the Charging Case with other products.
3. Make sure the product is within the appropriate temperature range when in use.
4. Place the Charging Case on a flat and stable surface when in use. Make sure the device is properly insulated to prevent fire hazards.
5. DO NOT touch the contact points on the Charging Case.
6. Keep the Charging Case free of sand or dust. Otherwise, it may prevent the Charging Case from opening properly. If there is any noticeable buildup, wipe the Charging Case with a clean, dry cloth.
7. Fully charge the Charging Case every three months. If the Charging Case is not intended to be used for an extended period, disconnect it from the external power source and discharge the battery to 60%.
8. Make sure the external charging contacts on the Charging Case are free of dirt before charging.

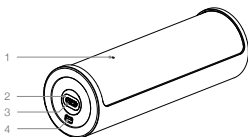
In the Box

Charging Case ×1



Introduction

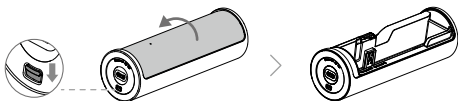
The Osmo Pocket Charging Case can be used as a portable charger for the Osmo Pocket. When the Charging Case is fully charged, it can fully charge the Osmo Pocket once. The Charging Case and the Osmo Pocket can be charged simultaneously when an external power source is connected. The Charging Case also has slots for ND filters, smartphone adapters, and microSD cards.



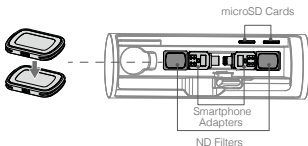
1. Osmo Pocket Charging Indicator
2. Status Indicator
3. Power Port (USB-C)
4. Opening Switch

Usage

1. Toggle the opening switch down and the Charging Case will open automatically.

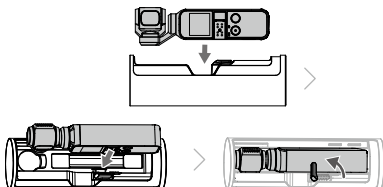


2. You can place four ND filters, two smartphone adapters, and two microSD cards as shown below.



The accessories mentioned in the Osmo Pocket Charging Case User Guide are sold separately, except for those listed under "In The Box".

3. Place the Osmo Pocket in the Charging Case as shown below. Make sure to position the camera as illustrated below and that the universal port of the Osmo Pocket attaches to the side of the Charging Case. Toggle the switch to secure the Osmo Pocket.



4. Close the Charging Case manually to charge the Osmo Pocket. Please note that the Osmo Pocket will not charge while the Charging Case is open.
5. To charge the Charging Case and the Osmo Pocket simultaneously, connect the Power Port (USB-C) of the Charging Case to an external power source.



Every time you open and then close the Charging Case, the Status LED will show the current battery level. Refer to the Status LED Descriptions section for more information.

Status LED Descriptions

Charging Status LED Descriptions

Both the Charging Case and the Osmo Pocket will be charged if there is an external power source connected. When there is no external power source connected, only the Osmo Pocket will be charged.

Refer to the table below for more information.

Charging Status	LED	Blinking Pattern	Battery Level
Charging Case only	Charging Case Status Indicator	Pulses yellow	Charging Case (0-60%)
		Pulses green	Charging Case (61-100%)
		Solid green for 1 minute and then turns off	Fully charged
Charging Case and Osmo Pocket simultaneously	Charging Case Status Indicator	Pulses yellow	Charging Case (0-60%)
		Pulses green	Charging Case (61-100%)
		Solid green	Charging Case is fully charged. Osmo Pocket is still charging.
		Solid green for 1 minute and then turns off	Charging Case and Osmo Pocket are fully charged
	Osmo Pocket Charging Indicator	Blinks green once	Osmo Pocket (0-25%)
		Blinks green twice	Osmo Pocket (26-50%)
		Blinks green three times	Osmo Pocket (51-75%)
		Blinks green four times	Osmo Pocket (76-100%)
		Solid green	Osmo Pocket is fully charged. Charging Case is still charging.
		Solid green for 1 minute and then turns off	Charging Case and Osmo Pocket are fully charged
Osmo Pocket Only	Charging Case Status Indicator	Pulses green	Charging Case (61-100%)
		Pulses yellow	Charging Case (6-60%)
		Pulses red three times and then turns off	Charging Case (0-5%)
		Off	Osmo Pocket is fully charged
	Osmo Pocket Charging Indicator	Blinks green once	Osmo Pocket (0-25%)
		Blinks green twice	Osmo Pocket (26-50%)
		Blinks green three times	Osmo Pocket (51-75%)
		Blinks green four times	Osmo Pocket (76-100%)
		Solid green for 1 minute and then turns off	Osmo Pocket is fully charged

Status Indicator Descriptions

Status	Blinking Pattern	Descriptions
Battery Level Display	Blinks red three times and then turn off	Charging Case Battery Level (<5%)
	Pulses twice	Displays the current battery level.
	N/A	Charging Case Battery Level (<2%)
Firmware Update	Blinks red and green	Updating firmware
Errors	Blinks yellow three times	Charging Case is abnormal
	Solid yellow	Charging Case temperature is too high (>60°C) or too low (<5°C); overcurrent or overvoltage
	Solid red	Critical error

Specifications

Model	OT-111
Capacity	1500 mAh
Input	5 V/2 A
Output	8.8 V/600 mA
Operating Temperature	5-60 °C
Supported Battery Charger	5 V / 2 A or above
Voltage	5 V (±0.25 V)