



S1 Pro
Multi-position PA System


Owner's Guide

Important Safety Instructions





Please read and keep all safety and use instructions.

Important Safety Instructions

Refer to the owner's guide (<http://bosepro.link/sldocs>) for more information about your SI Pro (including accessories and replacement parts).

1. Read these instructions.
2. Keep these instructions.
3. Heed all warnings.
4. Follow all instructions.
5. Do not use this apparatus near water.
6. Clean only with a dry cloth.
7. Do not block any ventilation openings. Install in accordance with the manufacturer's instructions.
8. Do not install near any heat sources such as radiators, heat registers, stoves, or other apparatus (including amplifiers) that produces heat.
9. Do not defeat the safety purpose of the polarized or grounding-type plug. A polarized plug has two blades with one wider than the other. A grounding-type plug has two blades and a third grounding prong. The wider blade or third prong is provided for your safety. If the provided plug does not fit in your outlet, consult an electrician for replacement of the obsolete outlet.
10. Protect the power cord from being walked on or pinched, particularly at plugs, convenience receptacles, and the point where it exits from the apparatus.
11. Only use attachments/accessories specified by the manufacturer.
12.  Use only with the cart, stand, tripod, bracket, or table specified by the manufacturer or sold with the apparatus. When a cart is used, use caution when moving the cart/apparatus combination to avoid injury from tip-over.
13. Unplug this apparatus during lightning storms or when unused for long periods of time.
14. Refer all servicing to qualified personnel. Servicing is required when the apparatus has been damaged in any way such as power-supply cord or plug is damaged, liquid has been spilled or objects have fallen into the apparatus, the apparatus has been exposed to rain or moisture, does not operate normally, or has been dropped.

WARNINGS/CAUTIONS:

-  This symbol on the product means there is uninsulated, dangerous voltage within the product enclosure that may present a risk of electrical shock.
-  This symbol on the product means there are important operating and maintenance instructions in this guide.
-  Contains small parts which may be a choking hazard. Not suitable for children under age 3.
-  This product contains magnetic material. Consult your physician on whether this might affect your implantable medical device.

All Bose products must be used in accordance with local, state, federal and industry regulations. It is the installer's responsibility to ensure installation of the product is performed in accordance with all applicable codes, including local building codes and regulations. Consult the local authority having jurisdiction before installing this product.

To reduce the risk of fire or electrical shock, do NOT expose the product to rain, liquids, or moisture. Not applicable for products rated IPX4-9.

Do NOT expose this product to dripping or splashing and do not place objects filled with liquids, such as vases, on or near the product. Not applicable to products rated IPX4-9.

Keep the product away from fire and heat sources. Do NOT place naked flame sources, such as lighted candles, on or near the product.

Do NOT use a power inverter with this product.

Do NOT use in vehicles or boats.

Do NOT make unauthorized alterations to this product.

Do NOT expose products containing batteries to excessive heat (e.g. from storage in direct sunlight, fire, or the like).

The battery provided with this product is for use with the Bose SI Pro Multi-position PA system only.

The battery provided with this product may present a risk of fire, explosion or chemical burn if mishandled, incorrectly replaced or replaced with an incorrect type.

Risk of fire and burns. Do NOT open, crush, heat above 45°C (113°F) or incinerate. Follow manufacturer's instructions.

Only use genuine Bose batteries with this product. Contact Bose customer service for replacement batteries.

Where the mains plug or appliance coupler is used as the disconnect device, the disconnect device shall remain readily operable.

Do NOT use the Bose SI Pro system with a tripod/stand that is unstable. The loudspeaker is only designed for use on a 35 mm post, and the tripod/stand must be capable of supporting a speaker with a minimum weight of 71 kg (15.7 lbs) and an overall size of 241 x 279 x 330 mm (9.5 x 11 x 13 inches). Using a tripod/stand that is not designed to support the size and mass of the SI Pro system may lead to an unstable and hazardous condition that could result in injury.

Regulatory Information

Dimensions (H x W x D): 330 x 241 x 286 mm (13 x 9.5 x 11.2 in) / Net Weight: 7.1 kg (15.7 lbs)

Charging temperature range: 0°C–42°C (32°F–108°F)

Discharging temperature range: –20°C–45°C (–4°F–113°F)

This product meets all EN55103-2 immunity requirements for E1 electromagnetic environment.

This equipment should be installed and operated with a minimum distance of 20 cm between radiator and your body.

Shielded cables are required to maintain regulatory compliance

Provide an earth connection or ensure the socket outlet incorporates a protective earthing connection before connecting the plug to the mains socket outlet.

CAN ICES-3 (B)/NMB-3(B)

Information About Products That Generate Electrical Noise (FCC Compliance Notice for US)

NOTE: This equipment has been tested and found to comply with the limits for a Class B digital device, pursuant to Part 15 of the FCC Rules. These limits are designed to provide reasonable protection against harmful interference in a residential installation. This equipment generates, uses, and can radiate radio frequency energy and, if not installed and used in accordance with the instructions, may cause harmful interference to radio communications. However, there is no guarantee that interference will not occur in a particular installation. If this equipment does cause harmful interference to radio or television reception, which can be determined by turning the equipment off and on, the user is encouraged to try to correct the interference by one or more of the following measures:

Reorient or relocate the receiving antenna.

Increase the separation between the equipment and receiver.

Connect the equipment into an outlet on a circuit different from that to which the receiver is connected.

Consult the dealer or an experienced radio/TV technician for help.

Changes or modifications not expressly approved by Bose Corporation could void the user's authority to operate this equipment.

This device complies with part 15 of the FCC Rules and with Industry Canada license-exempt RSS standard(s). Operation is subject to the following two conditions: (1) This device may not cause harmful interference, and (2) this device must accept any interference received, including interference that may cause undesired operation.

Management Regulation for Low-power Radio-frequency Devices

Article XII

According to "Management Regulation for Low-power Radio-frequency Devices", without permission by the NCC, any company, enterprise, or user is not allowed to change frequency, enhance transmitting power, or alter original characteristics, as well as performance, to an approved low power radio-frequency device.

Article XIV

The low power radio-frequency devices shall not influence aircraft safety and interfere with legal communications; If found, the user shall cease operating immediately until no interference is achieved. The said legal communications means radio communications in compliance with the Telecommunications Act.

The low power radio-frequency devices must be susceptible with the interference from legal communications or ISM radio wave radiated devices.



Bose Corporation hereby declares that this product is in compliance with the essential requirements and other relevant provisions of Directive 2014/53/EU and all other applicable EU directive requirements. The complete declaration of conformity can be found at: www.bose.com/compliance.



This product conforms to all applicable Electromagnetic Compatibility Regulations 2016 and all other applicable UK regulations. The complete declaration of conformity can be found at: www.bose.com/compliance.

Bose Corporation hereby declares that this product is in compliance with the essential requirements per Radio Equipment Regulations 2017 and all other applicable UK regulations. The complete declaration of conformity can be found at: www.bose.com/compliance.

Power State Table


The product, in accordance with the Ecodesign Requirements for Energy Related Products Directive 2009/125/EC and the Ecodesign for Energy-Related Products and Energy Information (Amendment) (EU Exit) Regulations 2020, is in compliance with the following norm(s) or document(s): Regulation (EC) No. 1275/2008, as amended by Regulation (EU) No. 801/2013.

Required Power State Information	Power Modes	
	Standby	Networked Standby
Power consumption in specified power mode, at 230V/50Hz input	≤ 0.5 W	N/A*
Time after which equipment is automatically switched into mode	≤ 20 min	N/A*
Power consumption in networked standby if all wired network ports are connected and all wireless network ports are activated, at 230V/50Hz input	N/A	N/A*
Network port deactivation/activation procedures. Deactivating all networks will enable standby mode.	Bluetooth® : Deactivate by clearing the pairing list by pressing and holding the Bluetooth button for 10 seconds. Activate by pairing with a Bluetooth source. * Product does not utilize a networked standby mode for a Bluetooth® connection and does not have the ability to be configured to a network via Wi-Fi® or Ethernet	

Frequency band of operation 2402 to 2480 MHz.

Bluetooth: Maximum transmit power less than 20 dBm EIRP.

Bluetooth Low Energy: Maximum power spectral density less than 10 dBm/MHz EIRP.

 This symbol means the product must not be discarded as household waste, and should be delivered to an appropriate collection facility for recycling. Proper disposal and recycling helps protect natural resources, human health, and the environment. For more information on disposal and recycling of this product, contact your local municipality, disposal service, or the shop where you bought this product.



Please dispose of used batteries properly, following local regulations. Do not incinerate.



Li-ion



Date of Manufacture: The eighth digit in the serial number indicates the year of manufacture; "7" is 2007 or 2017.

China Importer: Bose Electronics (Shanghai) Company Limited, Level 6, Tower D, No. 2337 Gudai Rd. Minhang District, Shanghai 201100

EU Importer: Bose Products B.V., Gorslaan 60, 1441 RG Purmerend, The Netherlands

Mexico Importer: Bose de México, S. de R.L. de C.V., Paseo de las Palmas 405-204, Lomas de Chapultepec, 11000 México, D.F. Phone Number: +5255 (5202) 3545

Taiwan Importer: Bose Taiwan Branch, 9F-A1, No. 10, Section 3, Minsheng East Road, Taipei City 104, Taiwan. Phone Number: +886-2-2514 7676

UK Importer: Bose Limited, Bose House, Quayside Chatham Maritime, Chatham, Kent, ME4 4QZ, United Kingdom

Apple and the Apple logo are trademarks of Apple Inc. registered in the U.S. and other countries. App Store is a service mark of Apple Inc.

The Bluetooth® word mark and logos are registered trademarks owned by Bluetooth SIG, Inc. and any use of such marks by Bose Corporation is under license.

Android is a trademark of Google Inc.

Google Play and the Google Play logo are trademarks of Google LLC.

Bose Corporation Headquarters: 1-877-230-5639

©2022 Bose Corporation. No part of this work may be reproduced, modified, distributed or otherwise used without prior written permission.

Please complete and retain for your records.

Serial Number: _____

Model Number: _____

Warranty Information

This product is covered by a limited warranty.

For warranty details, visit global.bose.com/warranty.

Overview	4
Product Overview	4
Features and Benefits.....	4
Package Contents	4
Optional Accessories.....	4
System Configurations.....	5
Elevated Surface.....	5
Tilt-Back.....	5
Monitor	5
Speaker Stand.....	5
Bose® Connect App	6
Features.....	6
System Setup	7
Connections and Controls	7
Connecting Power.....	8
Connecting Sources	8
Channel 1 & 2 Controls	8
Channel 3 Controls.....	8
Charging the Battery	9
Quick Charge	9
Battery Life Indicator	9
Using a Speaker Stand.....	9
Connection Scenarios	10
Elevated Surface	10
Tilt-Back	11
Monitor.....	12
Speaker Stand.....	13
General Purpose PA.....	14
Stereo.....	14
Dual-Mono/Daisy-Chain	15
Care & Maintenance	16
Replacing the Battery.....	16
Cleaning Your S1 Pro	17
Troubleshooting	17
S1 Pro Specifications	18

Overview

Thank you for purchasing the Bose® S1 Pro Multi-position PA system. Whether you are performing for a small audience, hosting your own special event or entertaining at home, now you'll always be ready to sound great.

This guide provides detailed setup and operating instructions for your S1 Pro system and explains how to connect to a variety of audio sources. For additional information on using the system, including tips, techniques and frequently asked questions, please visit www.Bose.com/livesound.

Product Overview

Sound great anywhere with the ultra-portable Bose S1 Pro Multi-position PA system. Designed for musicians, DJs and general PA use, the S1 Pro is the ultimate all-in-one PA, floor monitor, practice amplifier and primary music system.

Multiple positions with Auto EQ allow the S1 Pro to be set down on the floor, up on a table, or even mounted on a speaker stand, ensuring that you always sound your best. And with a 3-channel mixer, reverb, *Bluetooth*® streaming and ToneMatch® processing onboard, it's always ready to be your go-anywhere music system for nearly any occasion.

Features and Benefits

Lightweight & Portable: Weighing 15.7 lbs (7.1 kg), the rugged S1 Pro is designed to transport effortlessly from the car to the event.

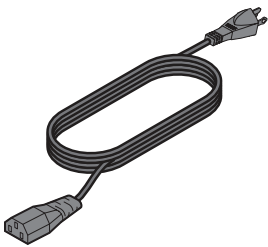
Versatility meets Simplicity: The S1 Pro comes with a full-featured, 3-channel mixer with reverb and *Bluetooth*® streaming. Sound great quickly with ToneMatch® processing for microphones and acoustic guitars, while playing music wirelessly using your mobile device. Perform nearly anywhere with the included rechargeable lithium-ion battery for ultimate portability.

Adaptable: Multiple positions give you the best coverage option for your application, while Auto EQ maintains optimum sound in any orientation. Download the Bose® Connect app to access additional options and features like Stereo Mode, so that you can wirelessly stream *Bluetooth*® audio to a second system for even more output.

Impressive size-to-performance ratio: The S1 Pro delivers high-output in a small package, ready to serve as your ultimate all-in-one PA, floor monitor, practice amplifier or primary music system.

Package Contents

The S1 Pro carton contains an S1 Pro system and one AC power cord:



AC power cord

Optional Accessories

S1 Pro Backpack

S1 Slip Cover

S1 Battery Pack

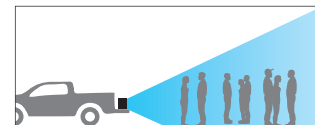
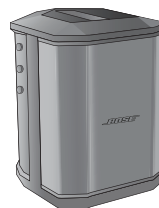
For a complete list of optional equipment and accessories, please visit www.Bose.com.

System Configurations

The versatile Bose® S1 Pro system operates in four unique modes. With Auto EQ, the system automatically updates to maintain optimum tonal balance for each position. Use the examples below to quickly identify the best mode for your application.

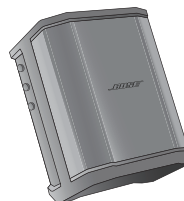
Elevated Surface

Position the S1 Pro on a surface. This projects sound clearly and evenly throughout the audience, and ensures that audience members enjoy the full frequency range of the system.



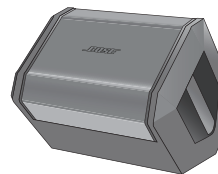
Tilt-Back

For performances where your audience is close to you, tilt the S1 Pro onto its back edge. For best results, the performer should stand or sit to one side of the loudspeaker to avoid blocking sound from the audience.



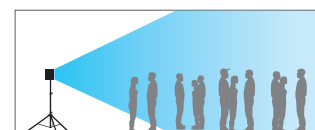
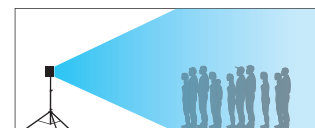
Monitor

To use the S1 Pro as a personal floor monitor, place it on the ground horizontally, in front of and pointing toward the performer. Tilt the loudspeaker onto its side edge.



Speaker Stand

Place one or two S1 Pro systems on speaker stands (sold separately) for general-purpose sound reinforcement.



Note: Rotate the Bose logo counterclockwise to match your chosen mode.

Bose® Connect App

Download the Bose® Connect app to access additional options and features like Stereo Mode, so that you can wirelessly stream audio to a second system for even more output.

Features

Easily connect to and switch between multiple mobile devices with a single swipe.

Configure your speakers to play in Party mode or Stereo mode.

Compatible with most Apple and Android systems.

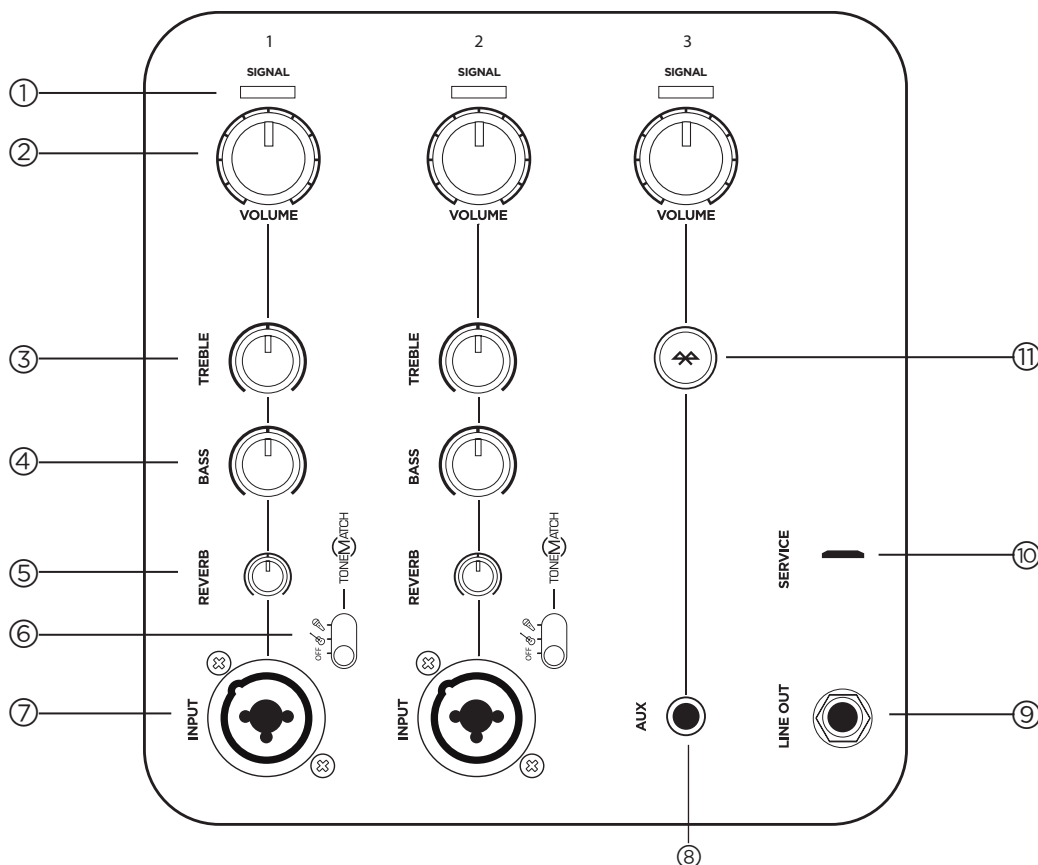
Keep your speaker up-to-date with the latest software.





System Setup

Connections and Controls

The S1 Pro control panel provides the necessary connectors, controls and indicators for operation.

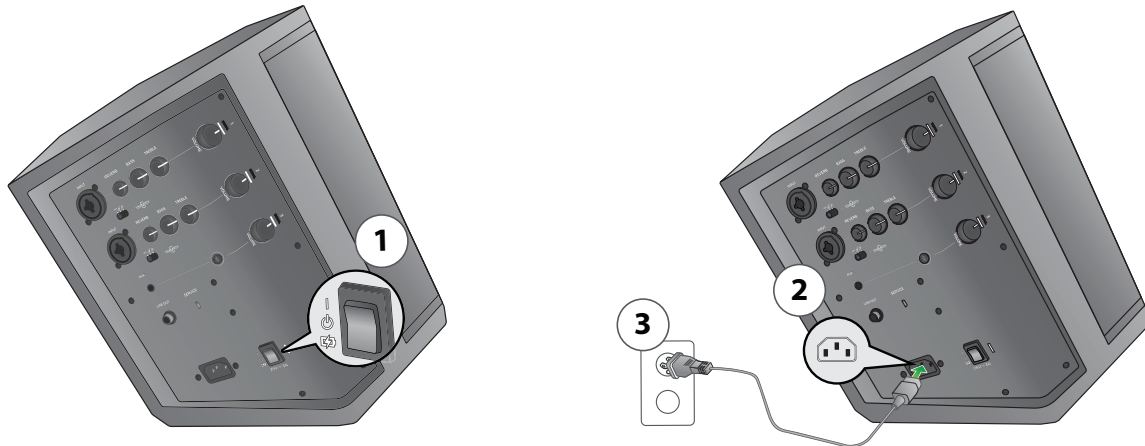


Use Channel 1 and 2 inputs for microphones and musical instruments. Integrated ToneMatch® signal processing allows microphones and instruments to sound their best. Use Channel 3 for *Bluetooth*® connectivity and line-level inputs.

- ① **Signal/Clip indicator:** Displays the input signal status in color.
Green: Signal present
Red: Signal clipping
Note: Reduce the corresponding volume control to prevent signal clipping.
- ② **Volume control:** Adjust the volume of your microphone, instrument or audio source.
- ③ **Treble control:** Adjust the high-frequency balance of your microphone or instrument.
- ④ **Bass control:** Adjust the low-frequency balance of your microphone or instrument.
- ⑤ **Reverb control:** Adjust the amount of reverb applied to your microphone or instrument.
- ⑥ **ToneMatch switch:** Move the switch to the  or  position to enable the ToneMatch preset.
- ⑦ **Channel input:** Analog input for connecting microphone (XLR) and instrument (TS unbalanced) cables.
- ⑧ **Aux input:** Use a 3.5 mm TRS cable to connect a line-level audio source.
- ⑨ **Line Output:** Use a ¼" TRS cable to connect the line-level output to the Channel 1 or 2 input of a second S1 Pro to create a mono, two-loudspeaker setup.
Note: Line Out is post mix.
- ⑩ **Service port:** Micro-USB connector for Bose service use only.
- ⑪ **Bluetooth Pair button:** Used to set up pairing with *Bluetooth*-capable devices, such as mobile phones, tablets and laptops.

Connecting Power

1. Make sure the power switch is in **Standby** (⏻).
2. Plug the power cord into the connector on the S1 Pro.
3. Plug the other end of the power cord into a live electrical outlet.
4. Power on the system by turning the power switch to **On** (⏻).





Connecting Sources

Before connecting a sound source, adjust the appropriate channel **Volume** control fully counterclockwise.

Channel 1 & 2 Controls

Channel 1 and 2 are for use with dynamic microphones, guitars, keyboards or other instruments.

1. Connect your sound source to the **Channel** input of either Channel 1 or 2.
2. Apply a ToneMatch preset by adjusting the **ToneMatch** switch for the appropriate channel to  for microphones or  for other instruments.



Note: ToneMatch® presets automatically optimize the sound of your microphone or instrument.

3. Adjust the **Volume** control clockwise—while speaking into the microphone or playing your instrument—until the volume has reached the desired level.
4. Adjust the **Treble**, **Bass** and **Reverb** controls—while speaking into the microphone or playing your instrument—until the desired effect is achieved.

Channel 3 Controls

Channel 3 is for use with *Bluetooth*®-capable devices and line-level audio inputs.

Bluetooth Pairing

1. Turn on the *Bluetooth* feature on your mobile device.
Note: The *Bluetooth* feature is usually found in the *Settings* menu.
2. Press and hold the **Bluetooth Pair** button for two seconds.
Note: When ready to pair,  will flash white.
3. Select your Bose® S1 Pro system from the device list.
Note: When the device pairs successfully,  will turn solid white.

Note: If your paired phone receives a call, any music playing will be paused and the ring will come through the phone; no calls or notifications will come through the S1 Pro.

Aux Input

Connect a line-level sound source to the **Aux** input via a 3.5 mm (1/8") cable.

Note: Anything connected via the **Aux** input will automatically override any paired *Bluetooth* device.

Charging the Battery








Anytime your S1 Pro is plugged into AC power and the system is not in use, the battery is charging.

Quick Charge

Though the battery will always charge while your S1 Pro is connected to AC power, Quick Charge enables you to charge your battery more quickly. To enable **Quick Charge**, turn the power switch to (⚡) when not in use.

Battery Life Indicator

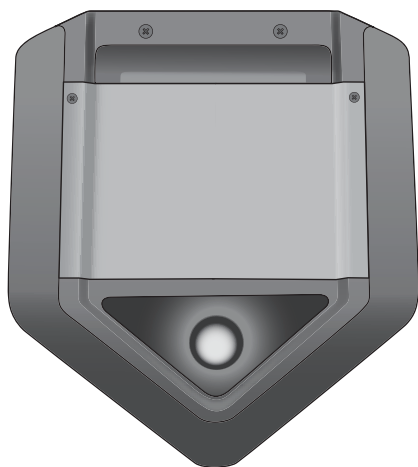
The current state of the battery life is shown by the power LED, which will flash when the unit is powered on. You can also check the battery life by double-clicking the **Bluetooth® Pair** button, which will cause the power LED to flash. See the following table for charge indicators:

 X 2	
 X 4	>75%
 X 3	50%-75%
 X 2	25%-49%
 X 1	10%-24%
 X 1	<10%

Note: A sticker depicting the above table is included with your S1 Pro. For easy reference, it is recommended that you apply this sticker to the bottom plate of your S1 Pro.

Using a Speaker Stand

The bottom of the S1 Pro system includes a pole cup for mounting the loudspeaker on a speaker stand. The pole cup fits a standard 35 mm post. When the S1 Pro is placed on a speaker stand, the EQ automatically updates to maintain optimum tonal balance.



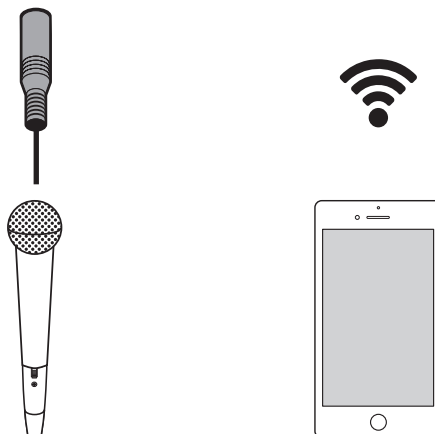
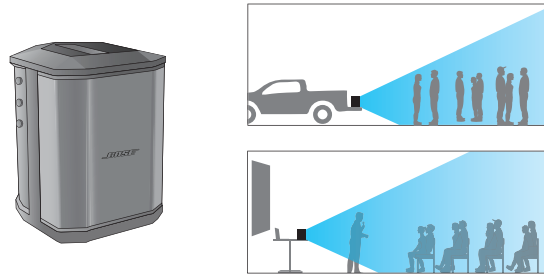
WARNING: Do NOT use the Bose® S1 Pro system with a tripod/stand that is unstable. The loudspeaker is only designed for use on a 35 mm post, and the tripod/stand must be capable of supporting a speaker with a minimum weight of 7.1 kg (15.7 lbs) and an overall size of 241 x 279 x 330 mm (9.5 x 11 x 13 inches). Using a tripod/stand that is not designed to support the size and mass of the S1 Pro system may lead to an unstable and hazardous condition that could result in injury.

Connection Scenarios

There are many ways to use the S1 Pro. The following pages show examples of typical setup scenarios.

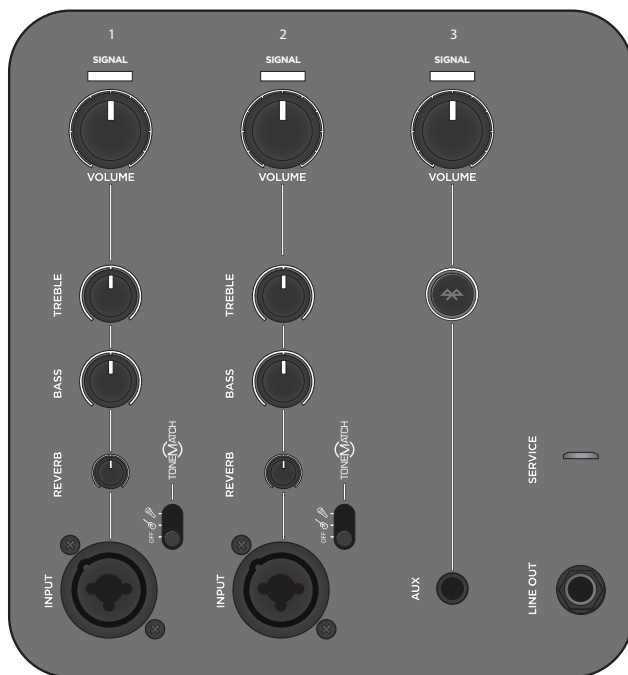
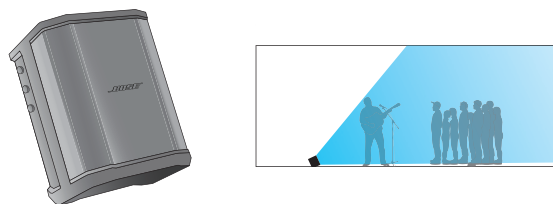
Elevated Surface

Place the S1 Pro on a tabletop in the front of a room to give a business presentation or place it in the bed of your pickup truck for a tailgate party. Plug in a microphone and narrate over a multimedia presentation or get your friends pumped up before the game while listening to music wirelessly via your *Bluetooth*[®]-capable mobile device.



Tilt-Back

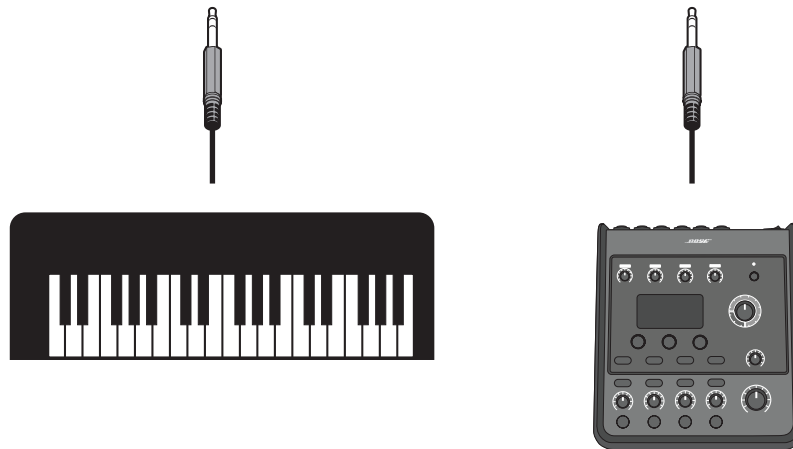
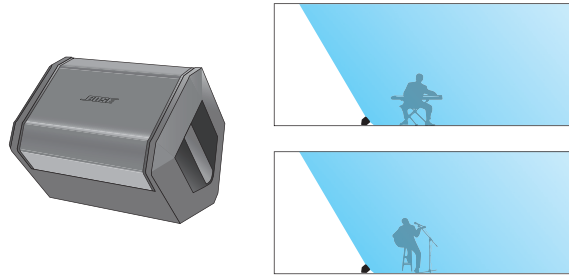
Place the S1 Pro in Tilt-Back mode on the ground behind you for live musical performances. Tilting the loudspeaker onto its back edge creates a higher vertical coverage pattern, perfect for small audiences and passersby. Cue your backing tracks via *Bluetooth*® streaming and play along with a microphone and guitar.



System Setup

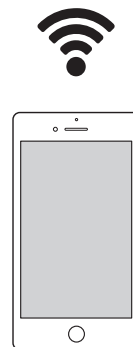
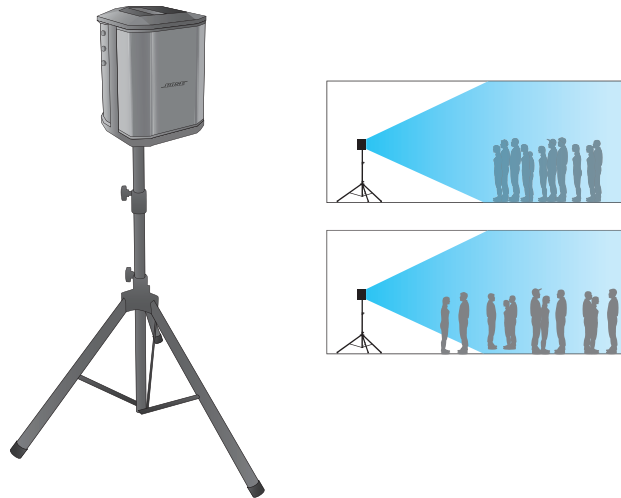
Monitor

Place the S1 Pro on its horizontal side edge to use as a floor monitor. Face it toward the performer to be used as a personal monitor or send your mix to a main PA system, then dial in your equalization and reverb preferences for your performance.



Speaker Stand

Using a conventional speaker stand, you can use your S1 Pro as a PA system. Connect a microphone and give a toast or sing a song while cuing music wirelessly via *Bluetooth*® streaming.

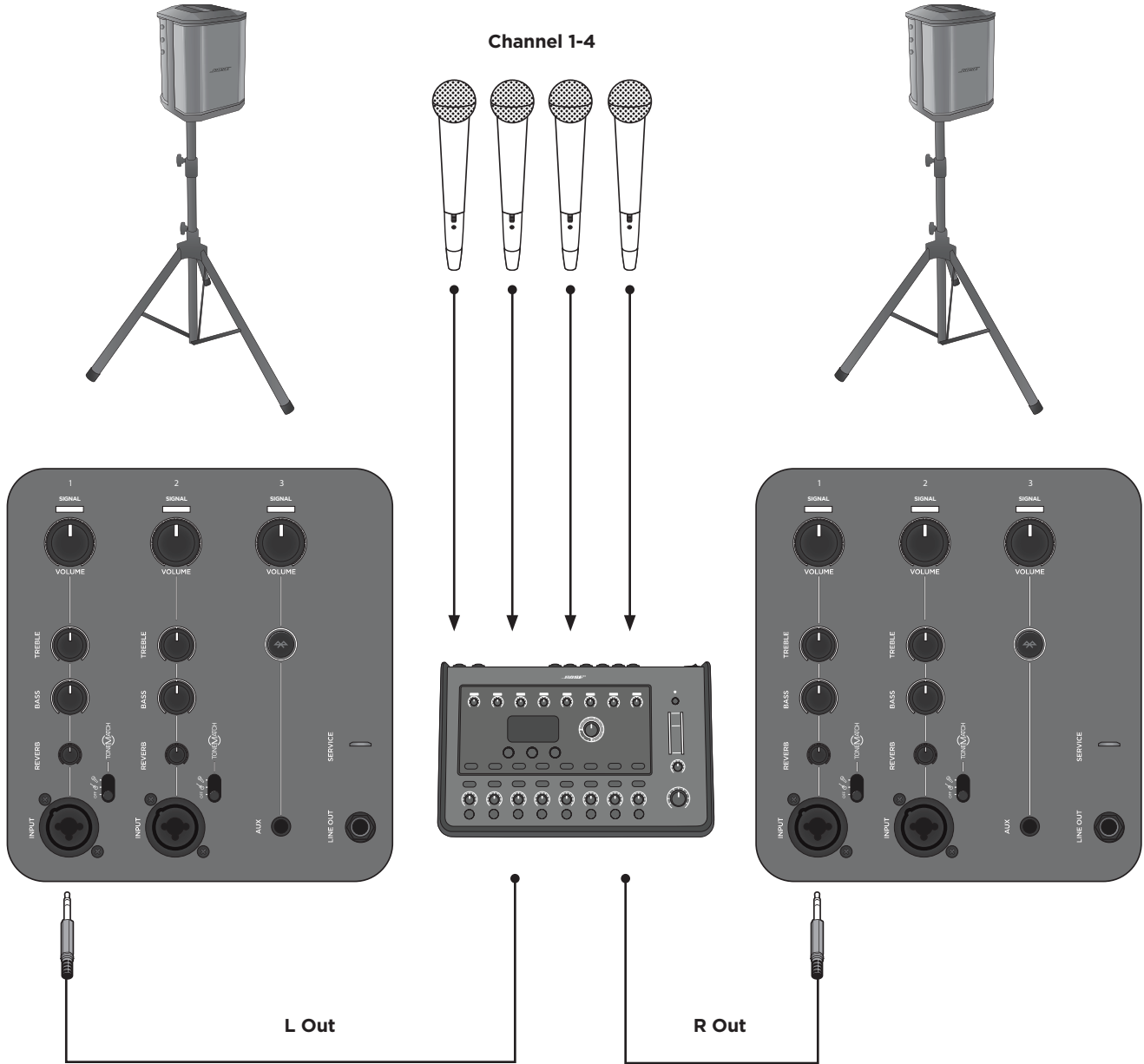


System Setup

General Purpose PA

Use a mixer with two S1 Pro systems as a conventional PA system. The wide and consistent coverage of the system ensures that the entire audience can easily hear the performance throughout the room.

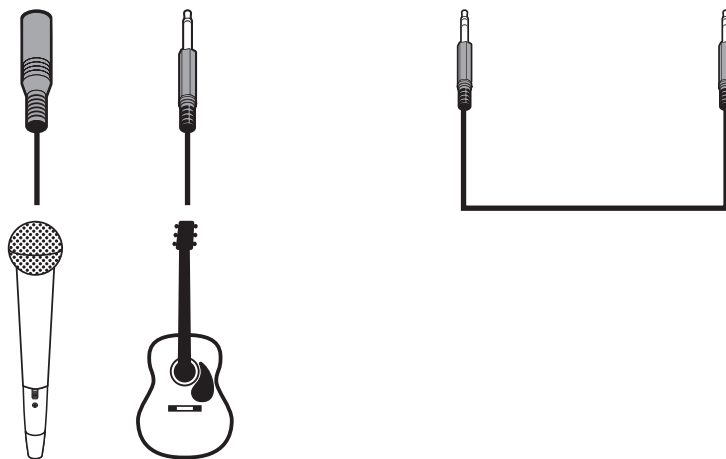
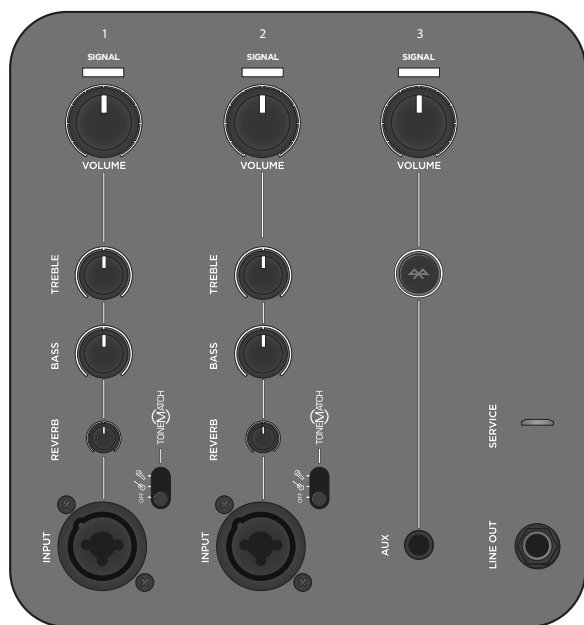
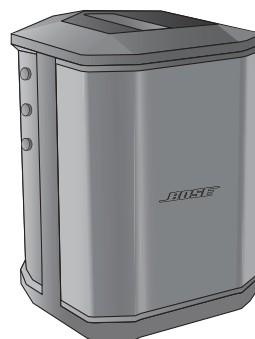
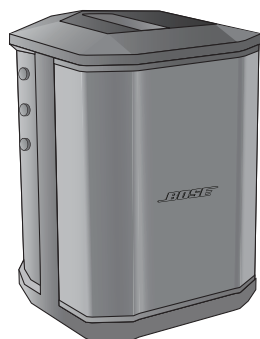
Stereo



Note: When used as a conventional PA, reverb and ToneMatch® should be turned off.

Dual-Mono/Daisy-Chain

Link two S1 Pro systems together in mono by using a TRS ¼" cable. Take the line out of the primary unit and plug it into the secondary S1 Pro system. Turn the channel volume up until both units are at desired volume.

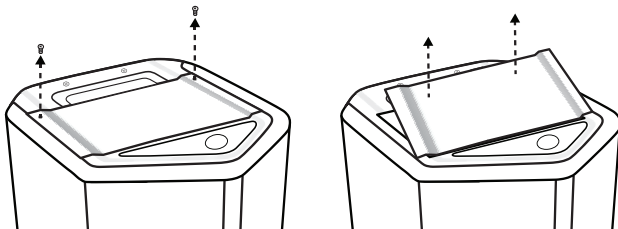


Note: On secondary units, set ToneMatch® and reverb to off and leave tone controls at center detent position.

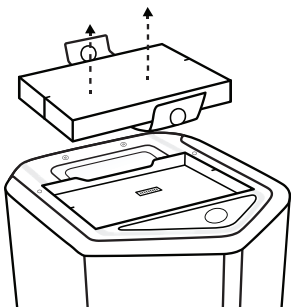
Care & Maintenance

Replacing the Battery

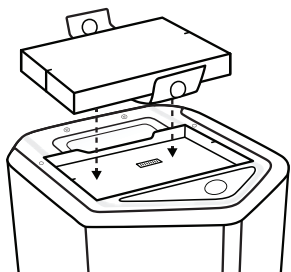
1. Switch the power to **Standby** (⏻) and disconnect the S1 Pro from the power source.
2. Unscrew the two screws and remove the bottom plate.



3. Remove the battery using the pull tabs.



4. Insert the new battery, ensuring the connector pins line up appropriately.



5. Replace the bottom plate and secure it with the two screws that were removed in Step 2.
6. Plug the S1 Pro into a power source.
7. Power on the system by turning the power switch to **On** (⏻).

Note: Your replacement S1 Battery Pack will remain in Sleep mode until your S1 Pro is powered on.

Note: To purchase a spare S1 Battery Pack, please visit www.Bose.com.

Cleaning Your S1 Pro

Clean the product enclosure using only a soft, dry cloth. If necessary, carefully vacuum the grille of the loudspeaker.



CAUTION: Do not use any solvents, chemicals, or cleaning solutions containing alcohol, ammonia, or abrasives.

CAUTION: Do not use any sprays near the product or allow liquids to spill into any openings.

Troubleshooting

If you experience problems while using this product, try the following solutions. If you still cannot solve the problem, seek online help at www.Bose.com/livesound. If you cannot find answers to your questions there, please call the Bose Product and Technical Support Team directly at (877) 335-2673.

Problem	What to do
No power	Make sure you have power at the AC outlet. Try operating a lamp or other equipment from the same AC outlet or test the outlet using an AC outlet tester. Battery may be in protection mode or discharged. Connect it to AC (mains) power.
No sound	Make sure your instrument is plugged into the signal input. Make sure the volume control is turned up on your source. Make sure the volume control is turned up on the S1 Pro. Make sure your Signal/Clip indicator is lit. Plug your instrument into a different amplifier to make sure the source is working.
Power LED is red	If flashing red, your battery has less than 10% battery life. If solid red, please call Product and Technical Support at (877) 335-2673.
With nothing plugged into the S1 Pro, a slight hum or buzz is heard	Using an AC outlet tester, test the AC outlet the S1 Pro is plugged into for reversed or open (hot, neutral, and/or ground) contacts. If using an extension cord, plug the S1 Pro directly into the outlet.
Instrument or audio source sounds distorted	Turn volume down on the source; if your audio source volume cannot be adjusted, "input pads" are available from your preferred instrument retailer. Try a different source or instrument.
Microphone is encountering feedback	Turn volume down. Orient the microphone so that it is not pointing directly at the loudspeaker. Try a different microphone. Try a different position for the loudspeaker and/or vocalist on stage. Increase the distance from the loudspeaker to the microphone. If using a vocal effects processor, make sure it is not contributing to the feedback problem.
Paired Bluetooth® device will not connect to the speaker	If your device requires a passcode, make sure the one you entered is correct. Make sure <i>Bluetooth</i> functionality is turned on or enabled on your source device. Your <i>Bluetooth</i> device may be out of range; try moving it closer to the speaker. If possible, turn off all other nearby <i>Bluetooth</i> devices or disable their <i>Bluetooth</i> functionality. Clear the speaker memory or pair to new device by pressing and holding the <i>Bluetooth</i> button for ten seconds. Pair the <i>Bluetooth</i> device and the speaker again. Turn the power off and back on; then try re-pairing your device.

Care & Maintenance

Problem	What to do
Excessive hum when daisy-chaining multiple units	Make sure you're using a ¼" TRS cable; do not use a ¼" TS (guitar) cable.
Speaker does not charge	<p>Set the power switch to On or Quick Charge and do not use the speaker while it is charging.</p> <p>Try charging your battery with the power switch set to On instead of Quick Charge.</p> <p>Move your speaker to a cooler location.</p> <p>Leave your speaker in Standby for several hours before trying to charge your battery again.</p> <p>Unplug your speaker, remove the battery, wait until the battery is cool to the touch and replace battery.</p>

S1 Pro Specifications

Enclosure	
Enclosure Material	Polypropylene plastic
Finish	Textured plastic
Grille	Steel with black powder-coat
Size	
Dimensions (H x W x D) - mm	330 x 241 x 286
Dimensions (H x W x D) - inches	13 x 9.5 x 11.2
Net Weight	15.7 lbs (7.1 kg)
Battery	
Type	Rechargeable lithium-ion battery
Charge Time	5 hours (3 hours in Quick Charge)
Play Time	Up to 11 hours



807173-0020

©2022 Bose Corporation, All rights reserved.
Framingham, MA 01701-9168 USA
www.Bose.com
All trademarks are the property of their respective owners
AM807173 Rev. 03
October 2022

