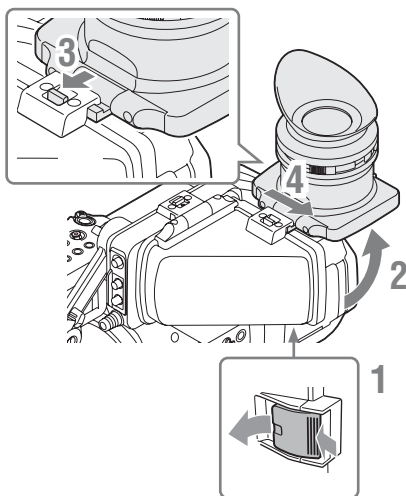


**To detach**

- 1** Push the clip on the bottom to release.
- 2** Flip up the eyepiece.
- 3** Slide the knob on the top to the opposite side of the eyepiece.
- 4** Detach the eyepiece by horizontally sliding it.

## Adjusting the Lens

The supplied VCL-614B2X/1 is called “exclusive lens” in this manual. (You can also use the VCL-614B2X.)

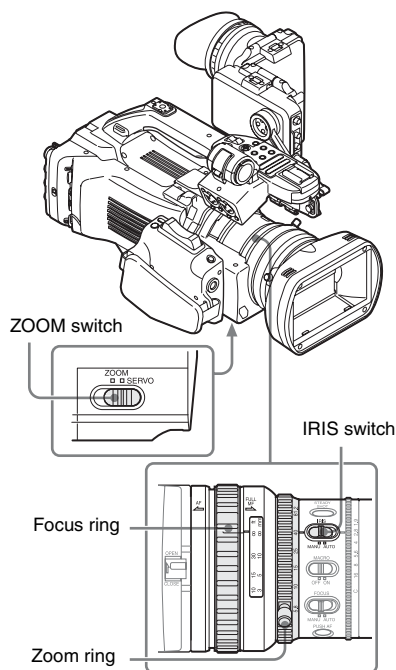
### Caution

Do not leave the camcorder with the lens facing the sun. Direct sunlight can enter through the lens, be focused in the camcorder, and cause fire.

## Adjusting the Flange Focal Length

It is necessary to adjust the flange focal length (the distance from the lens flange to the plane of the image along the optical axis) if the focus does not match properly from telephoto to wide angle during zoom operations.

Repeated adjustment is not necessary as long as the same lens is used.



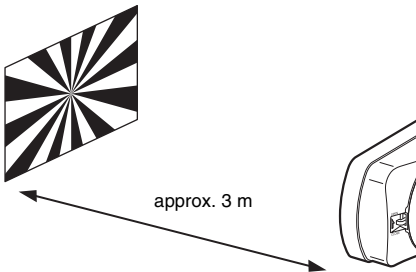
With the supplied or optional exclusive 1/2-inch EX Mount lens, the flange focal length can be adjusted automatically by the menu operation.




## Notes

- If a subject of insufficient contrast is used, or if the camcorder or subject moves during the adjustment, adjustment cannot be made properly. Once the adjustment begins, do not touch the camcorder body or lens until it ends.
- When the Shutter is in SLS mode, be sure to set the SLS setting to OFF before starting the adjustment.
- Be careful that no light source, such as a lamp, the sun, or a bright window, is in field of view during flange focal length adjustment.

- 1 Set the power switch to ON.
- 2 Set the IRIS switch to AUTO.
- 3 Place a high-contrast subject, such as a flange focal length adjustment chart, about 3 m (10 ft.) away from the camcorder, and light it well enough to provide a sufficient video output level.



- 4 Set the ZOOM switch to SERVO (Power Zoom mode).
  - 5 Press the MENU button to set the camcorder to Menu mode, and select  (the LENS File menu) then "Auto FB Adjust" from the menu.
  - 6 Move the cursor to "Execute" then press the joystick or the jog dial.
- The adjustment begins.

### During adjustment

The in-progress message is displayed.

### When the adjustment finished properly

The completion message is displayed.

## If the adjustment fails

An error message appears.

Check the conditions of the subject and lighting then perform the adjustment again.

For details on menu operations, see "Basic Menu Operations" on page 79.

When a lens other than the exclusive lenses is used, adjust the flange focal length manually.

## Replacing the Lens

In addition to the supplied VCL-614B2X/1 standard zoom lens, a wide zoom lens exclusively for the PMW-300 is available as an option. (You can also use the VCL-614B2X.)

Using an optional lens adaptor, a Sony Bayonet Mount lens can be mounted.

Note, however, that available functions, menu settings and performance may be restricted with non-exclusive lens.

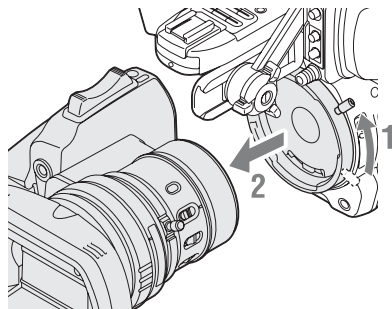
For non-exclusive but usable lenses, consult your Sony service representative.

### Note

Turn off the camcorder before replacing the lens.

## Removing the supplied lens

To remove the supplied lens, proceed as follows:



- 1 While holding the lens, turn the lens mount lever upward until it stops.
- 2 Pull the lens forward to remove.

### Notes

- When another lens is not immediately attached, attach the supplied lens mount cap and secure it by turning the lens mount lever downward.

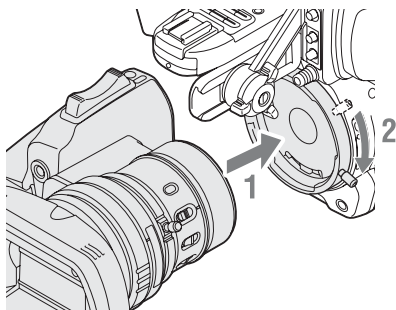


- When a non-exclusive lens is mounted for the first time, it may take about 20 seconds to start up the camcorder.

### Attaching an exclusive lens

To attach the optional 1/2-inch EX Mount lens, proceed as follows:

The supplied lens once removed can also be mounted in the same manner.

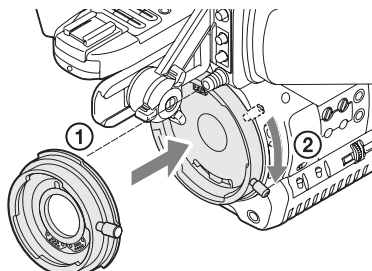


- 1 Align the alignment pin of the lens with the recess at the top of the mount section of the camcorder and set the lens in place.**
- 2 Turn the lens mount lever downward.**

### Attaching a Sony 1/2-inch Bayonet Mount lens

Use the optional lens adaptor.

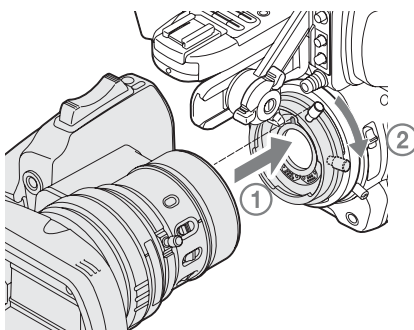
- 1 Attach the lens adaptor to the camcorder.**



Lens adaptor  
(not supplied)

- ① Align the alignment pin of the lens adaptor with the recess at the top of the mount section and set the adaptor in place.**
- ② Turn the lens mount lever of the camcorder downward. (Keep the lens mount lever of the lens adaptor in the upper position.)**

- 2 Attach the lens.**



Sony 1/2-inch Bayonet  
Mount lens (optional)

- ① Align the alignment pin of the lens with the recess of the adaptor and set the lens in place.**
- ② Turn the lens mount lever of the adaptor downward.**