



EOS WEBCAM UTILITY SOFTWARE

Mac OS Official Release Version

With so many of us relying on livestreaming and video calls on a day-to-day basis to stay connected with friends, visiting clients, getting an education, and so much more, the quality of that connection is key. We are proud to announce the release of the official version of our EOS Webcam Utility software for Windows, which lets you turn your compatible Canon EOS camera into your main webcam using only a USB cable.

REQUIREMENTS

- ✓ A camera compatible with EOS Webcam Utility Official Release software (see chart below).
- ✓ A USB cable* to connect the camera to the computer.
- ✓ A computer with an internet connection and an operating system capable of running the EOS Webcam Utility Release software.

The following are current system requirements: macOS Catalina (10.15), macOS Mojave (10.14) or macOS High Sierra (10.13), Intel Based Processor, 2GB RAM or greater, display screen resolution of 1,024x768 pixels or more, and approx. 32,000 colors or more.

** See compatible accessory chart on the last page*

ENHANCEMENTS

- ✓ More compatibility with your favorite communication and streaming programs.
- ✓ A larger list of compatible cameras that can take advantage of the EOS Webcam Utility.
- ✓ The ability to record internally on your camera while you are streaming giving you the maximum image quality for post-production editing.*

** Recording time might not be the same as streaming time, refer to your manual for maximum recording time*

COMPATIBLE APPLICATIONS



Apple Facetime



Hangouts Meet™



Slack



Cisco Webex®



Messenger



Streamlabs



Discord



Microsoft Teams



YouTube Live



Facebook Live



Open Broadcaster Software®



ZOOM



Hangouts™



Skype

Subscription to a third party service required. Subject to third party service providers terms and conditions.
Neither Canon Inc. nor Canon U.S.A., Inc. represents or warrant any third-party product or feature referenced hereunder.
All referenced product names and marks are trademarks of their owners and are hereby acknowledged.

MAC OS VERSION COMPATIBILITY

Application	macOS® Catalina (10.15)	macOS® Mojave (10.14)	macOS® High Sierra (10.13)
Apple Facetime	✗	✗	✓
Cisco Webex®	✓ Native app: No Browser: Yes (Chrome)	✓ Native app: No Browser: Yes (Chrome)	✓
Discord	✓ Native app: No Browser: Yes (Chrome)	✓ Native app: No Browser: Yes (Chrome)	✓
Facebook Live	✓	✓	✓
Hangouts™	✓	✓	✓
Hangouts Meet™	✓	✓	✓
Messenger	✓	✓	✓
Microsoft Teams	✓ Native app: No Browser: Yes (Chrome)	✓ Native app: No Browser: Yes (Chrome)	✓
Open Broadcaster Software®	✓	✓	✓
Skype	✓ Native app: No Browser: Yes (Chrome)	✓ Native app: No Browser: Yes (Chrome)	✓
Slack	✓ Native app: No Browser: Yes (Chrome)	✓ Native app: No Browser: Yes (Chrome)	✓ Native app: No Browser: Yes (Chrome)
Streamlabs	✓	✓	✓
YouTube Live	✓	✓	✓
ZOOM	✓	✓	✓

COMPATIBLE CAMERAS

Note: Genuine Canon accessories are recommended - see chart on last page for more information

EOS Cameras

EOS R6 **	EOS 5DS R	EOS Rebel T7i **
EOS R5	EOS 5DS	EOS Rebel T7 **
EOS RP **	EOS 6D Mark II **	EOS Rebel T6s
EOS R	EOS 6D	EOS Rebel T6i
EOS M200 **	EOS 7D Mark II	EOS Rebel T6
EOS M50 Mark II * **	EOS 7D	EOS Rebel T5i
EOS M50 **	EOS 90D **	EOS Rebel T5
EOS M6 Mark II **	EOS 80D **	EOS Rebel T3i
EOS-1D X Mark III	EOS 77D **	EOS Rebel T3
EOS-1D X Mark II	EOS 70D	EOS Rebel SL3 **
EOS-1D X	EOS 60D	EOS Rebel SL2 **
EOS 5D Mark IV	EOS Rebel T100 **	EOS Rebel SL1
EOS 5D Mark III	EOS Rebel T8i **	

PowerShot Cameras

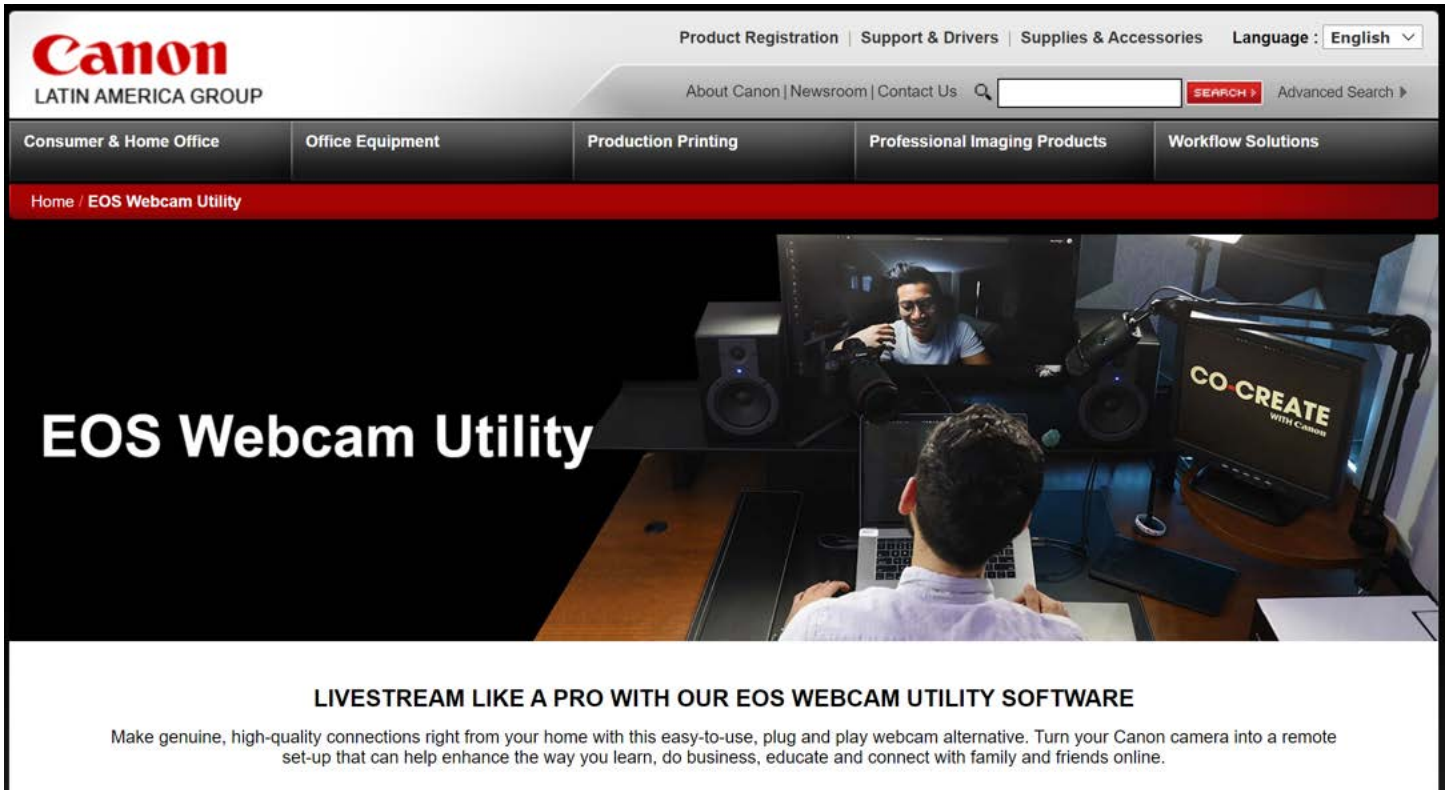
PowerShot G5X Mark II **	PowerShot G7X Mark III **	PowerShot SX70HS **
--------------------------	---------------------------	---------------------

* Recently added camera

** Camera does not ship with a bundled USB interface cable

HOW TO DOWNLOAD

1. Open your web browser and go directly to our [EOS Webcam Utility Website](#).



Canon
LATIN AMERICA GROUP

Product Registration | Support & Drivers | Supplies & Accessories | Language : English

About Canon | Newsroom | Contact Us

Consumer & Home Office | Office Equipment | Production Printing | Professional Imaging Products | Workflow Solutions

Home / EOS Webcam Utility

EOS Webcam Utility

LIVESTREAM LIKE A PRO WITH OUR EOS WEBCAM UTILITY SOFTWARE

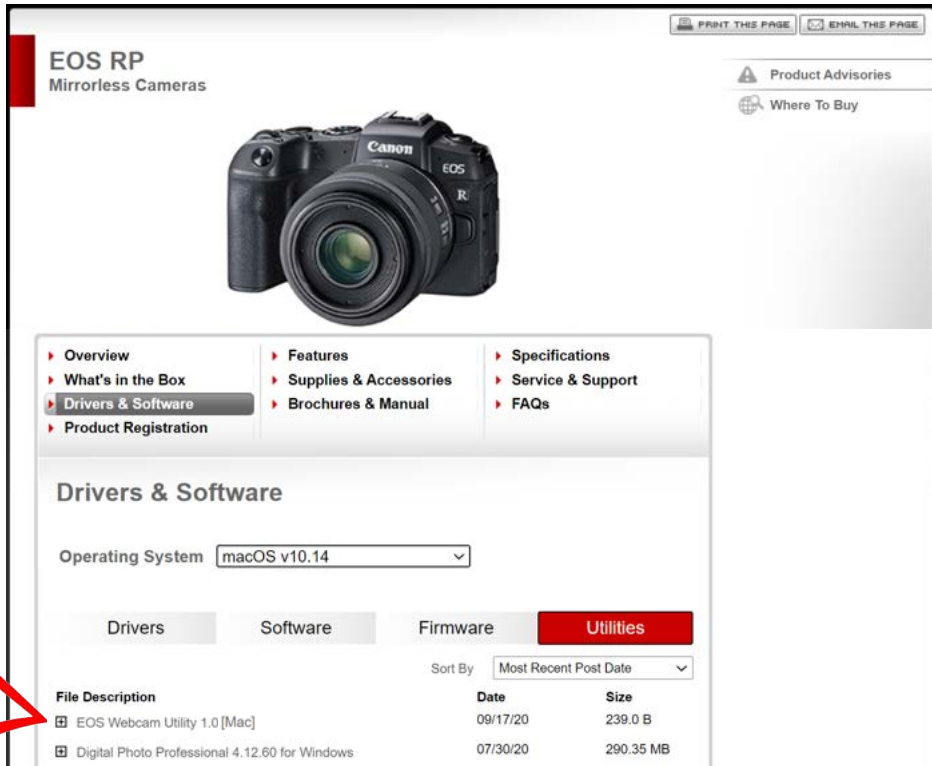
Make genuine, high-quality connections right from your home with this easy-to-use, plug and play webcam alternative. Turn your Canon camera into a remote set-up that can help enhance the way you learn, do business, educate and connect with family and friends online.

2. Select your camera model from the list displayed. You will then be redirected to the download page.

SELECT YOUR COMPATIBLE EOS OR POWERSHOT MODEL BELOW TO DOWNLOAD THE UTILITY

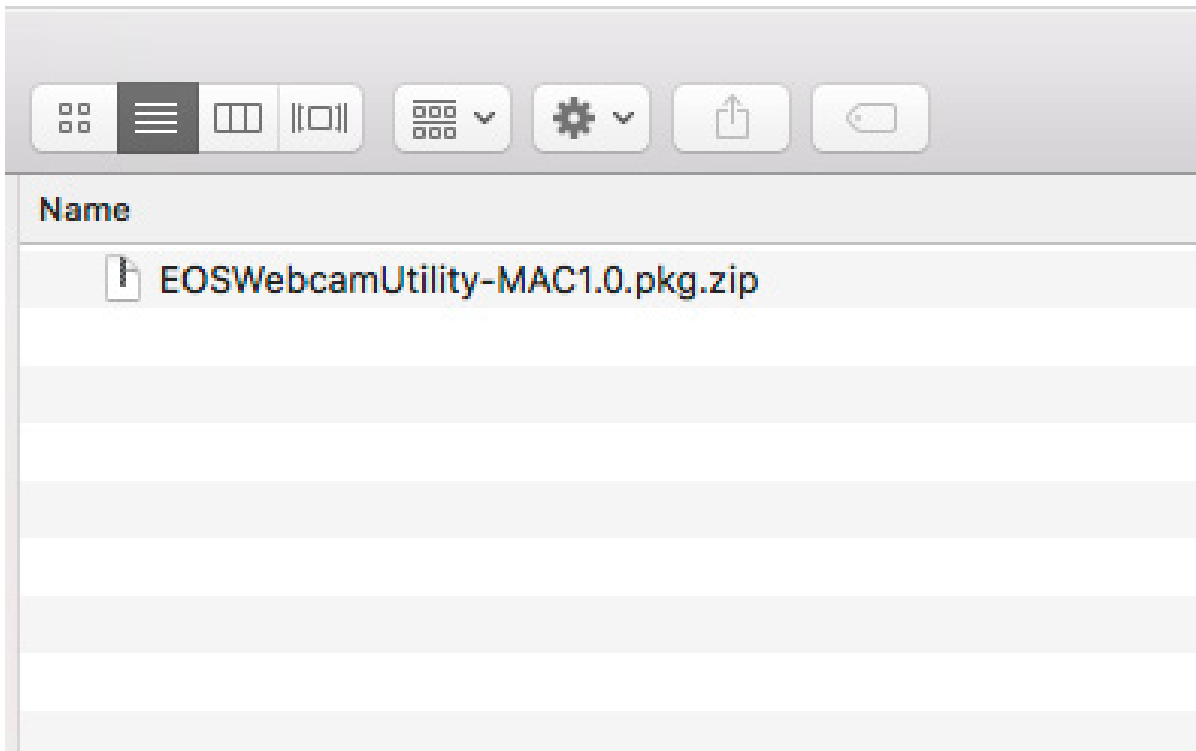
EOS Cameras		Powershot Cameras
EOS-1D X Mark III	EOS 7D Mark II	EOS Rebel SL3 **
EOS-1D X Mark II	EOS 7D	EOS Rebel SL2 **
EOS-1D X	EOS 90D **	EOS Rebel SL1
EOS 5DS R	EOS 80D **	EOS Rebel T7 **
EOS 5DS	EOS 77D **	EOS Rebel T6
EOS R6 **	EOS 70D	EOS Rebel T5
EOS R5	EOS 60D	EOS Rebel T3
EOS RP **	EOS Rebel T8i **	EOS Rebel T100 **

- 3.** Select and download “EOS Webcam Utility” under the Utilities section.
Note: Before installation, be sure to uninstall the Beta version if it is on your computer.

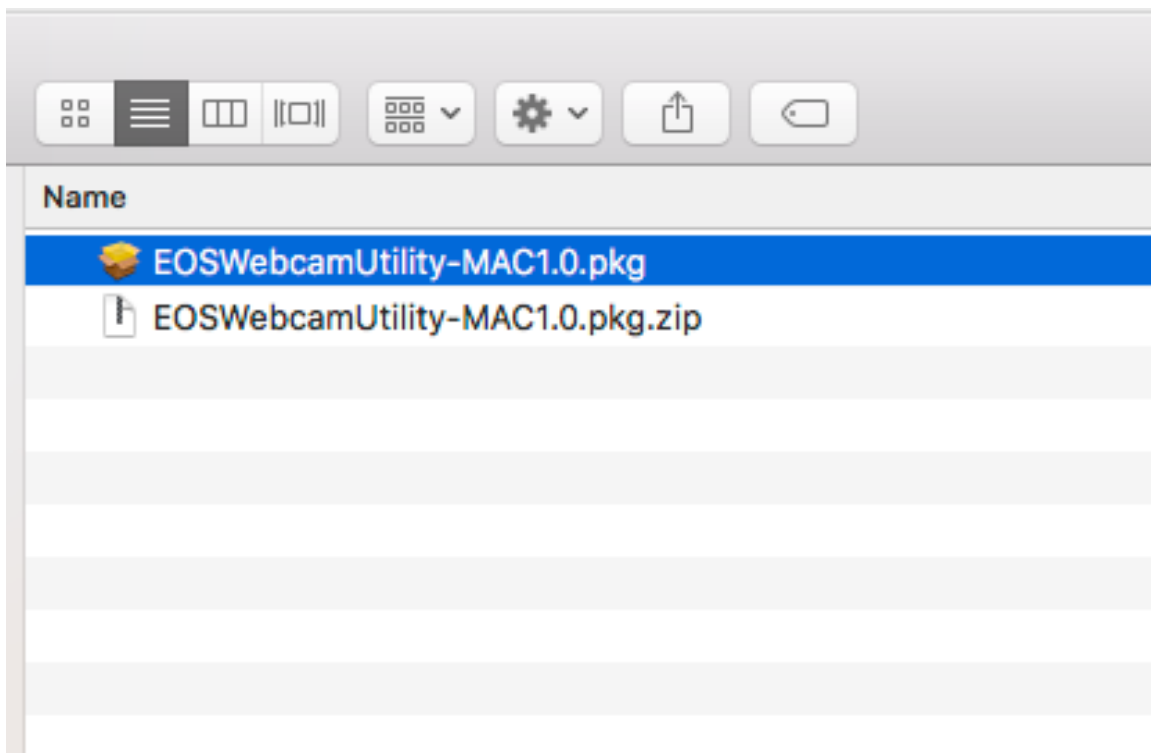


HOW TO INSTALL

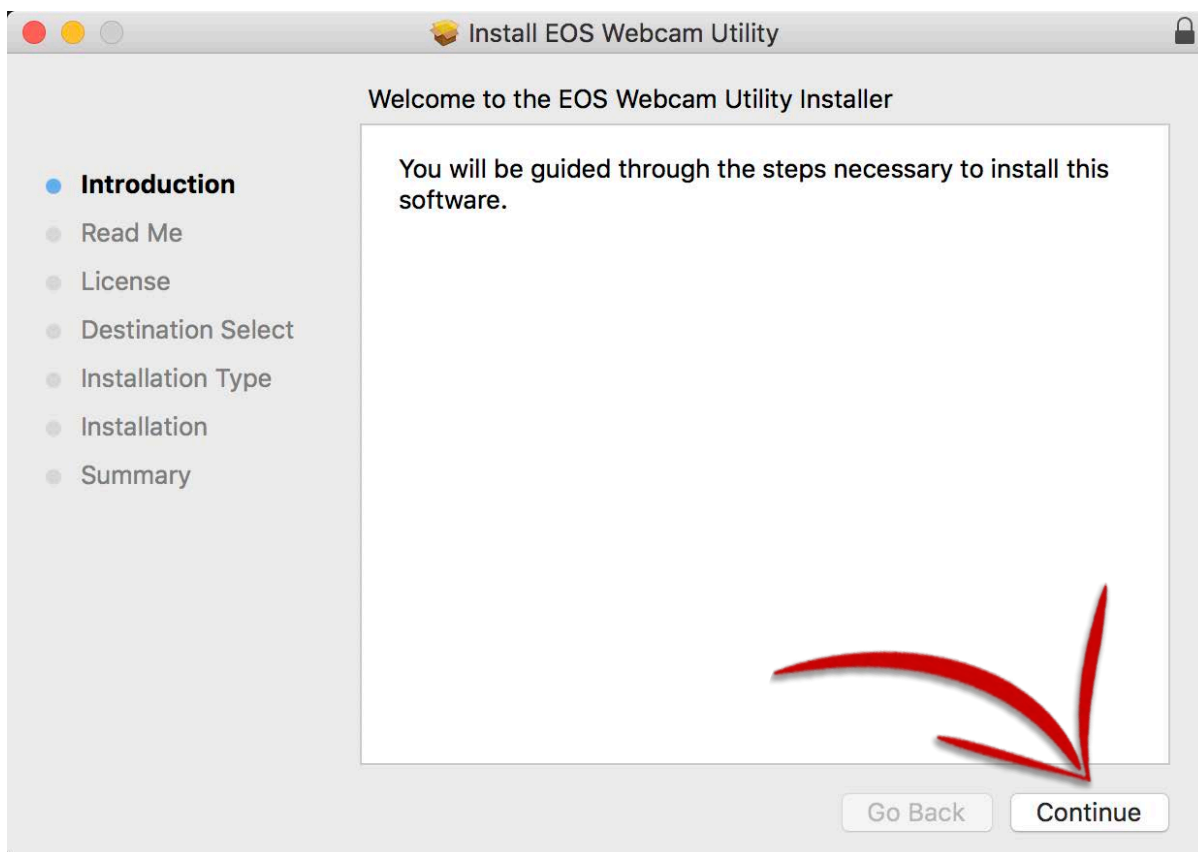
- 4.** Once the software download is complete, locate the “EOS Webcam Installation Package” in your computer’s “Downloads” folder. The file will be called “**EOSWebcamUtility-MAC1.0.pkg.zip**”. Double-click the .zip file.



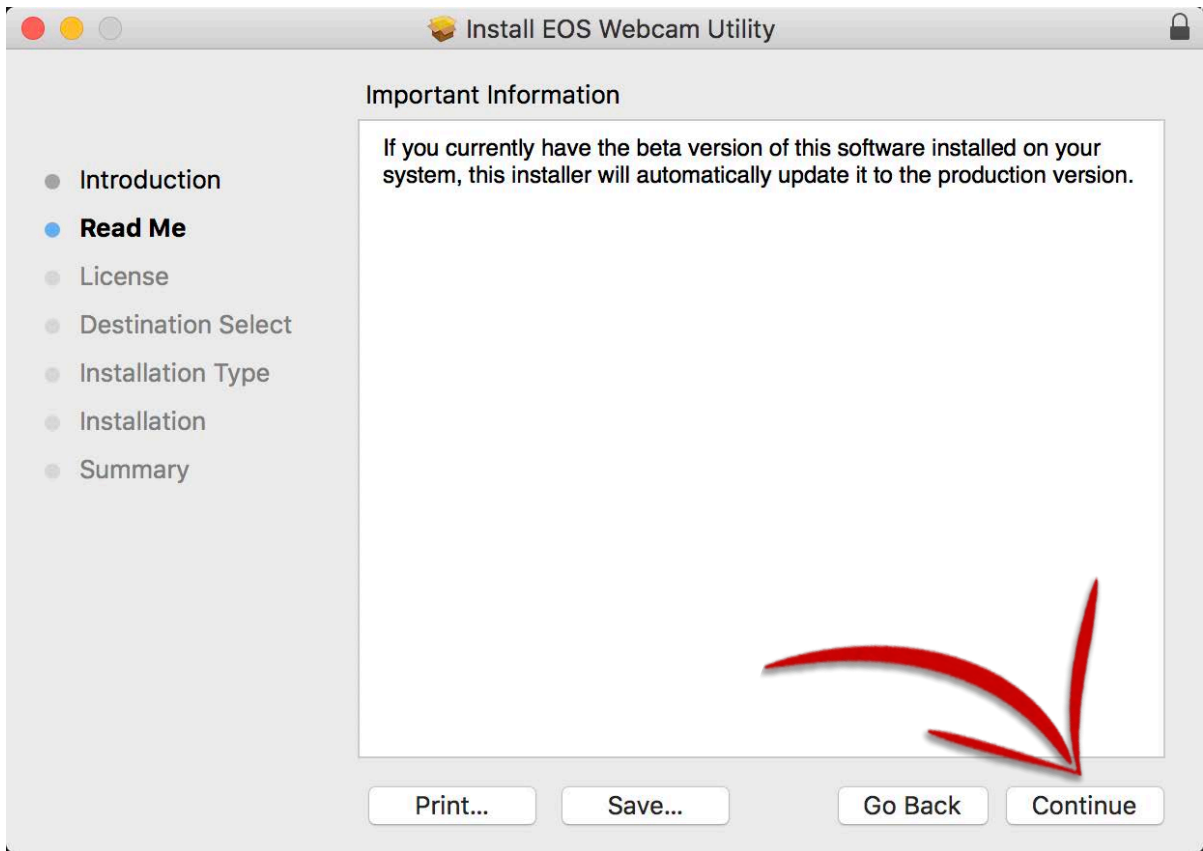
5. Run the EOSWebcamUtility-MAC1.0.pkg file.



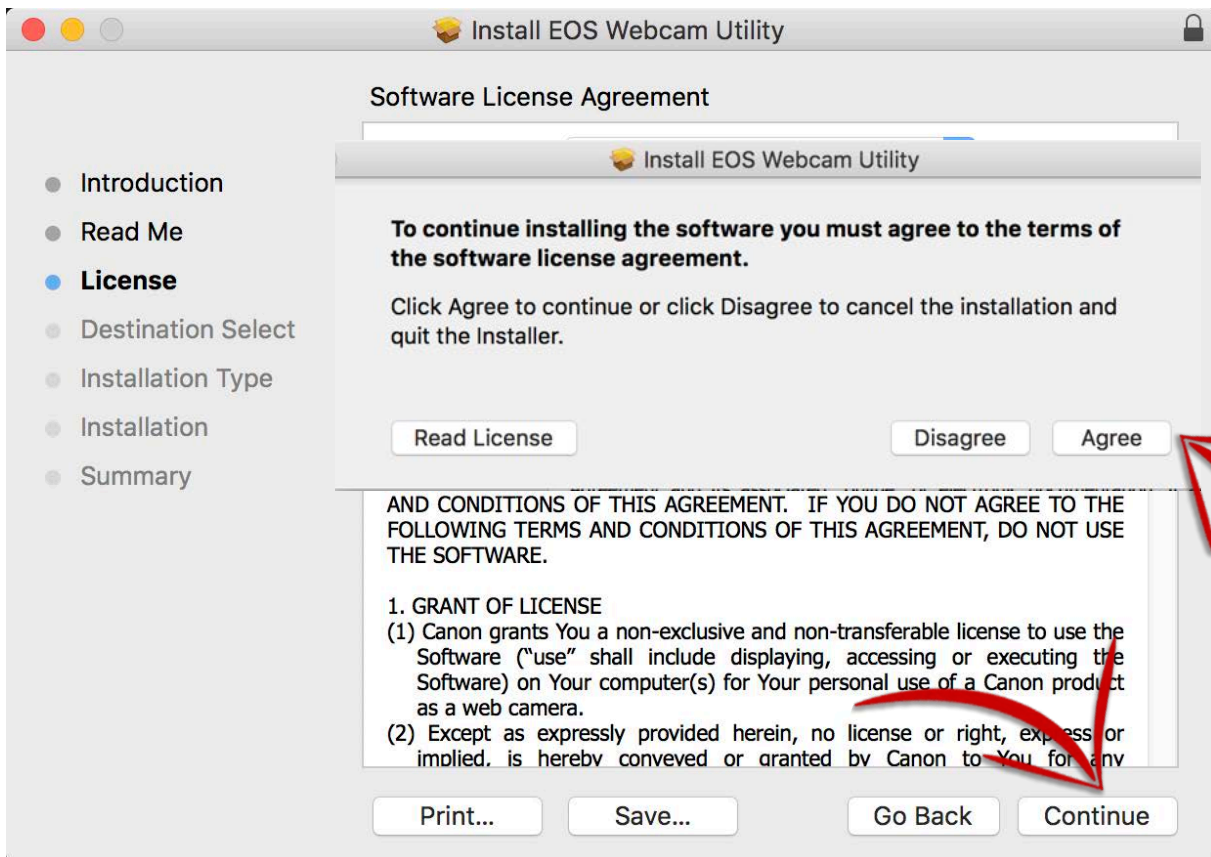
6. You will then be greeted by the "Introduction" screen. Click "Continue."



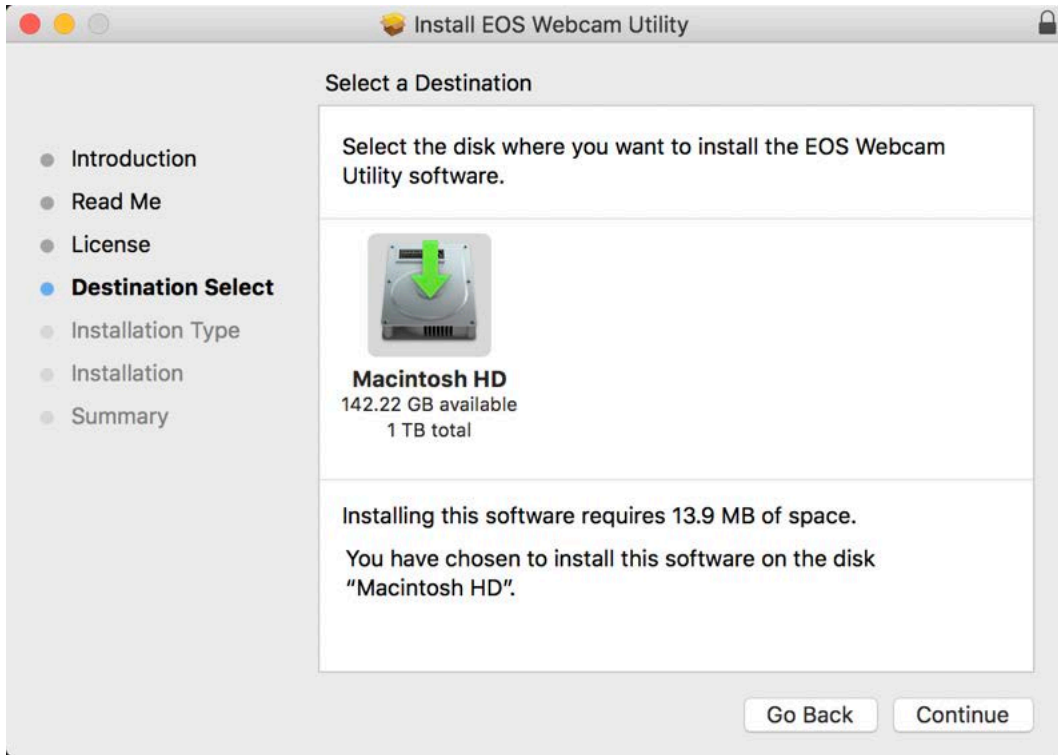
7. Read through the Important Information, then click "Continue."



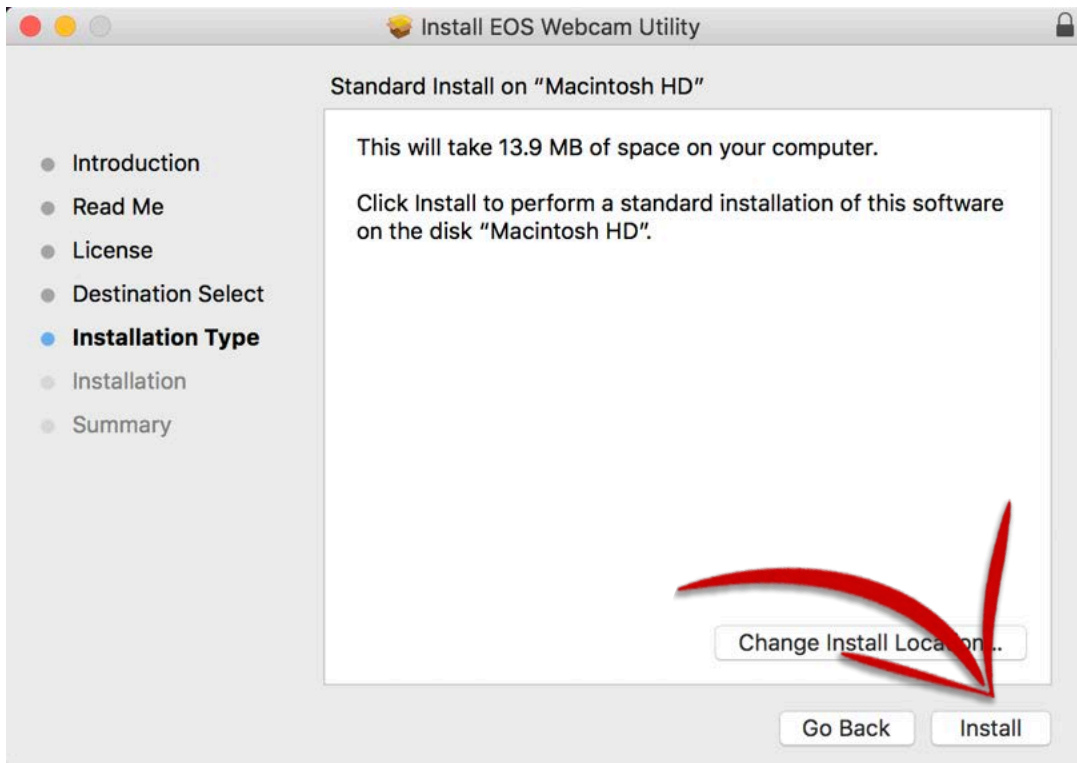
8. Read through the Software License Agreement and if you agree, click "Continue" then "Agree."



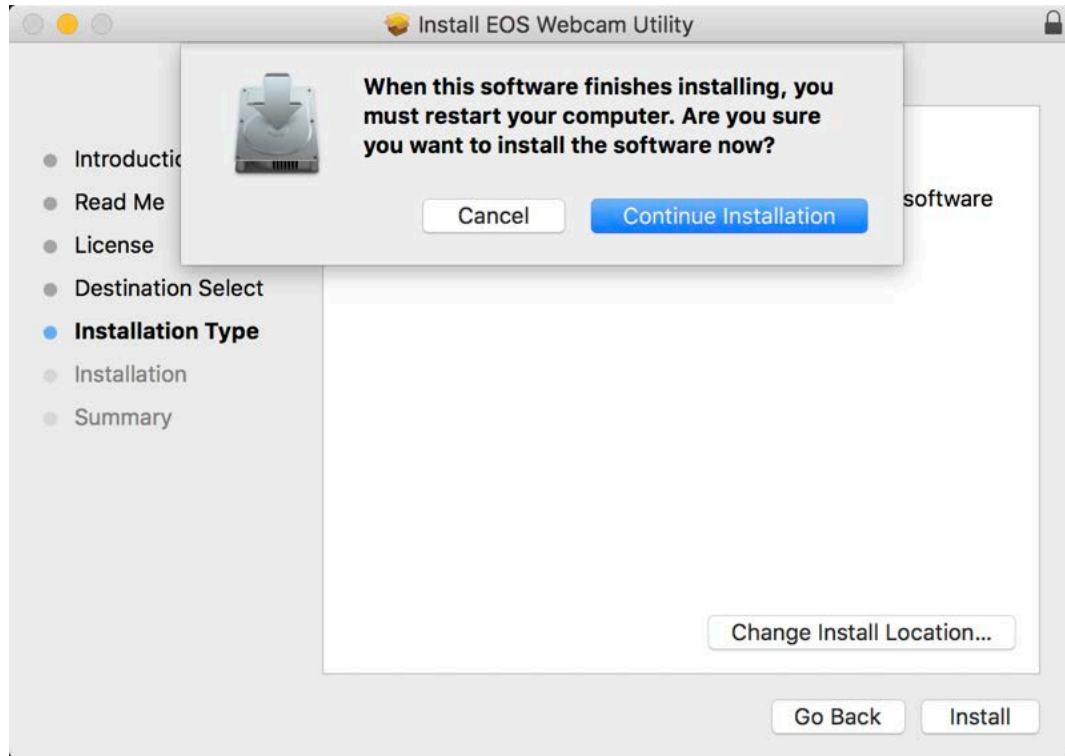
9. Select your folder destination, then, click "Continue."



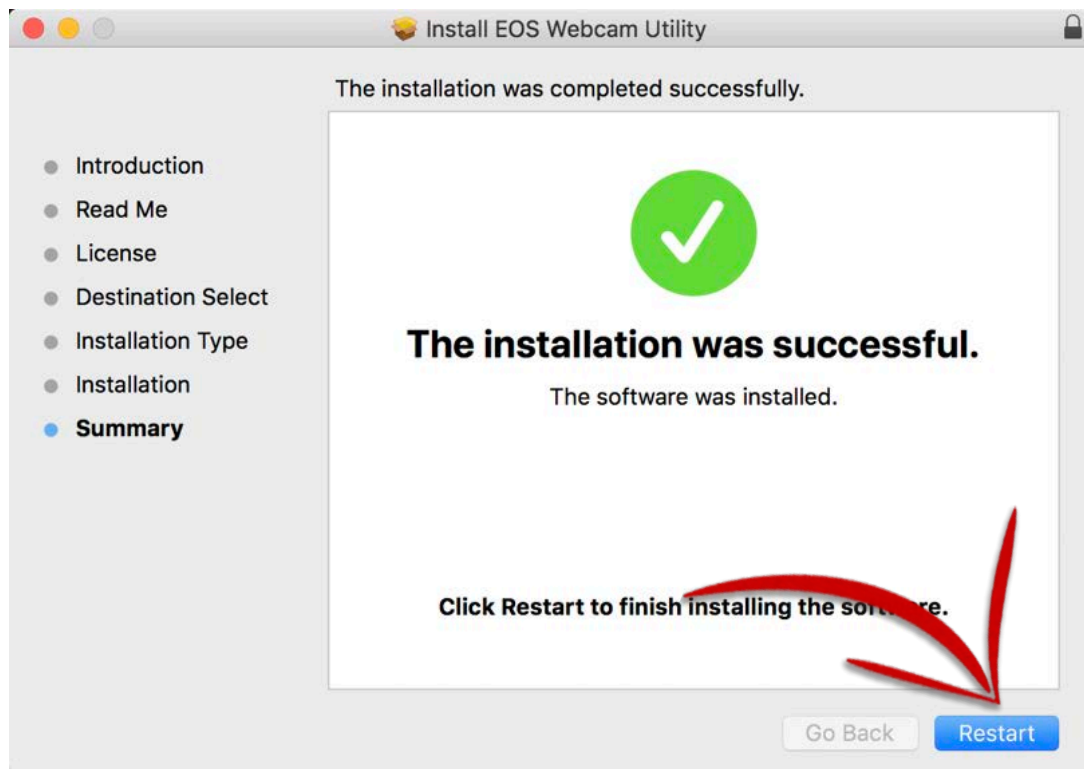
10. The installer is now ready to begin. Click "Install" to proceed.



11. The installer will alert you that the computer must be restarted after installation. Click "Continue Installation" to proceed.



12. Close other applications and click "Restart" to restart your computer.



HOW TO SETUP

- 13.** Once restarted, using your USB cable, connect one end of the USB cable to your camera, and then connect the other end to your computer. A direct connection to the computer is recommended.

Note: See the compatible accessory chart at the end regarding finding the correct cable for your camera.



- 14.** Set your camera to [Movie Mode]. Use your camera's Mode Dial, Mode Switch or Mode Button interface.

Note: Optimal settings are a resolution of [Full-HD] and a frame rate of [29.97P] (30P). If your camera doesn't have a [29.97P] (30P) setting, selecting [23.98P] (24P) will also work.



15. Lastly, open your web conferencing/streaming app of choice. Find the [Audio/video settings] menu and set "EOS Webcam Utility" as the camera of choice. Confirm that your computer's built-in microphone is selected as your "microphone"

Note: Audio is not transmitted from the camera.



Camera



Enjoy easy-to-use, high-quality video conferencing with EOS Webcam Utility functionality.

For troubleshooting and the latest information on support for EOS Webcam Utility, please visit the [EOS Webcam Utility Website](#).

EOS WEBCAM UTILITY STATUS SCREENS

Status Screen	Meaning	Action
	<p>Please check your USB cable connection.</p>	<ol style="list-style-type: none"> 1. Please check that your camera's USB cable is properly connected both at the camera-side and at the computer side. 2. Check your battery or power adapter 3. Check that your camera is powered on
	<p>The camera's LiveView video signal is being utilized by another camera.</p>	<p>Please [Exit], and [Close] any applications that may be running on your computer, or in your task tray that may be connected to your camera, or using the camera's LiveView video signal.</p> <p>For example: EOS Utility or an application connected to the camera.</p>

COMPATIBLE ACCESSORIES

Note: Genuine Canon accessories are recommended.

Camera	USB Cable	AC Power Supply
EOS-1D X Mark III	IFC-100U (to USB C) (bundled)	AC Adapter AC-E19 with DC Coupler DR-E19
EOS-1D X Mark II	IFC-150U II (bundled)	AC Adapter AC-E19 with DC Coupler DR-E19
EOS-1D X	IFC-200U (bundled)	ACK-E4
EOS 5DS R	IFC-150U II (bundled)	AC Adapter AC-E6N with DC Coupler DR-E6
EOS 5DS	IFC-150U II (bundled)	AC Adapter AC-E6N with DC Coupler DR-E6
EOS R5	IFC-100U (to USB C) (bundled)	AC Adapter AC-E6N with DC Coupler DR-E6
EOS 5D Mark IV	IFC-150U II (bundled)	AC Adapter AC-E6N with DC Coupler DR-E6
EOS 5D Mark III	IFC-150U II (bundled)	AC Adapter AC-E6N with DC Coupler DR-E6
EOS R6**	IFC-100U (to USB C)**	AC Adapter AC-E6N with DC Coupler DR-E6
EOS R	IFC-100U (to USB C) (bundled)	AC Adapter AC-E6N with DC Coupler DR-E6
EOS 6D Mark II**	IFC-400PCU**	AC Adapter AC-E6N with DC Coupler DR-E6
EOS 6D	IFC-200U (bundled)	AC Adapter AC-E6N with DC Coupler DR-E6
EOS RP**	IFC-100U (to USB C)**	AC Adapter AC-E6N with DC Coupler DR-E18
EOS 7D Mark II	IFC-150U II (bundled)	AC Adapter AC-E6N with DC Coupler DR-E6
EOS 7D	IFC-200U (bundled)	AC Adapter AC-E6N with DC Coupler DR-E6
EOS 90D**	IFC-600PCU**	AC Adapter AC-E6N with DC Coupler DR-E6
EOS 80D**	IFC-400PCU**	AC Adapter AC-E6N with DC Coupler DR-E6
EOS 77D**	IFC-400PCU**	AC Adapter AC-E6N with DC Coupler DR-E18
EOS 70D	IFC-400PCU (bundled) or IFC-200U	AC Adapter AC-E6N with DC Coupler DR-E6
EOS 60D	IFC-130U (bundled) or IFC-200U	AC Adapter AC-E6N with DC Coupler DR-E6
EOS Rebel T8i**	IFC-600PCU*	AC Adapter AC-E6N with DC Coupler DR-E18
EOS Rebel T7i**	IFC-400PCU*	AC Adapter AC-E6N with DC Coupler DR-E18
EOS Rebel T6s	IFC-130U(bundled) or IFC-200U	AC Adapter AC-E6N with DC Coupler DR-E18
EOS Rebel T6i	IFC-130U(bundled) or IFC-200U	AC Adapter AC-E6N with DC Coupler DR-E18
EOS Rebel T5i	IFC-130U(bundled) or IFC-200U	Compact Power Adapter CA-PS700 with DC Coupler DR-E8
EOS Rebel T3i	IFC-130U(bundled) or IFC-200U	Compact Power Adapter CA-PS700 with DC Coupler DR-E8
EOS Rebel SL3**	IFC-600PCU**	AC Adapter AC-E6N with DC Coupler DR-E18
EOS Rebel SL2**	IFC-400PCU**	AC Adapter AC-E6N with DC Coupler DR-E18
EOS Rebel SL1	IFC-130U(bundled) or IFC-200U	Compact Power Adapter CA-PS700 with DC Coupler DR-E15
EOS Rebel T7**	IFC-400PCU**	Compact Power Adapter CA-PS700 with DC Coupler DR-E10
EOS Rebel T6	IFC-130U(bundled) or IFC-200U	Compact Power Adapter CA-PS700 with DC Coupler DR-E10
EOS Rebel T5	IFC-130U(bundled) or IFC-200U	Compact Power Adapter CA-PS700 with DC Coupler DR-E10
EOS Rebel T3	IFC-130U(bundled) or IFC-200U	Compact Power Adapter CA-PS700 with DC Coupler DR-E10
EOS Rebel T100**	IFC-400PCU**	N/A
EOS M6 Mark II**	IFC-100U (to USB C)*	Compact Power Adapter CA-PS700 with DC Coupler DR-E17
EOS M50**	IFC-600PCU**	Compact Power Adapter CA-PS700 with DC Coupler DR-E12
EOS M50 Mark II**	IFC-600PCU**	Compact Power Adapter CA-PS700 with DC Coupler DR-E12
EOS M200**	IFC-600PCU**	Compact Power Adapter CA-PS700 with DC Coupler DR-E12
PowerShot G5 X Mark II**	IFC-100U (to USB C)**	N/A (Note: USB Power Adapter PD-E1 cannot be used at the same time as USB Interface Cable)
PowerShot G7 X Mark III**	IFC-100U (to USB C)**	N/A (Note: USB Power Adapter PD-E1 cannot be used at the same time as USB Interface Cable)
PowerShot SX70 HS**	IFC-600PCU**	N/A

** Camera does not ship with a bundled USB interface cable.