

Guide to apply V-Log to V-709 3D LUT file to DVX200 V-Log L clip on Adobe Premiere Pro CC 2015

1) Download “VARICAM 35 3DLUT V-Log to V-709 (Ver.1.00)” from the following URL, then unzip the downloaded file.

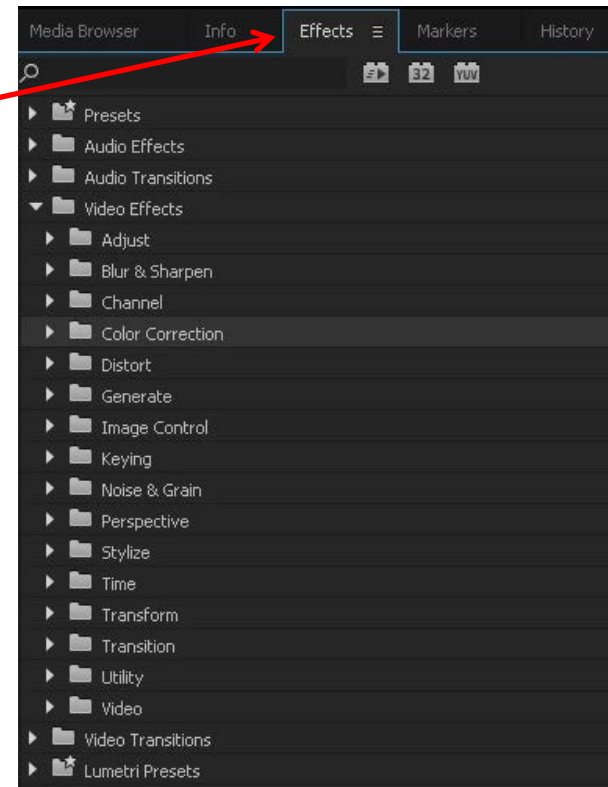
<http://pro-av.panasonic.net/en/varicam/35/dl.html>

2) Import DVX200 V-Log L recording clips on Adobe Premiere Pro CC 2015.

Create a new sequence and put the imported clips onto the sequence.

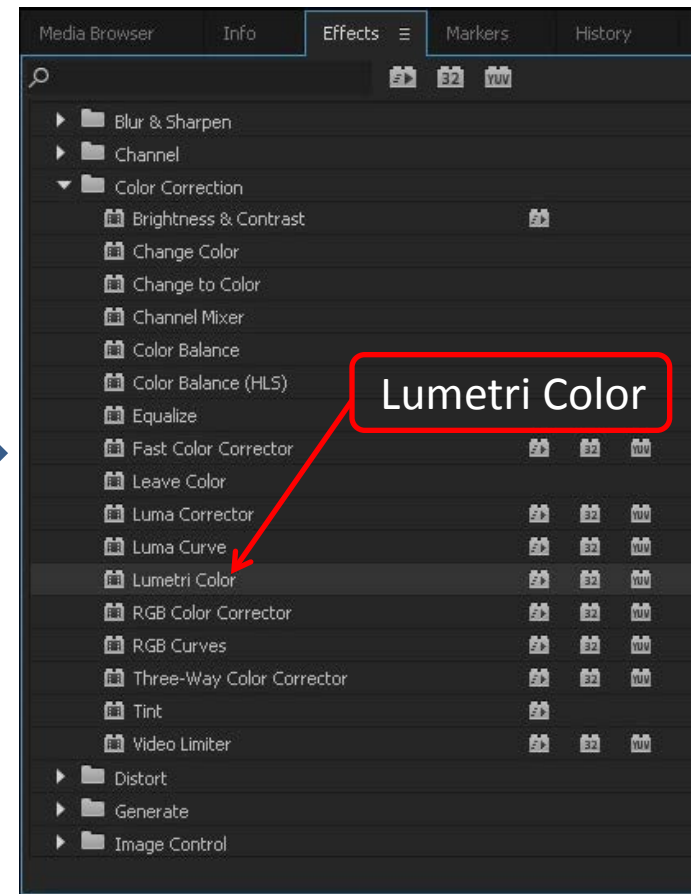
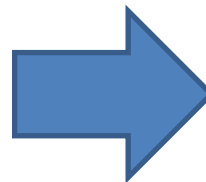
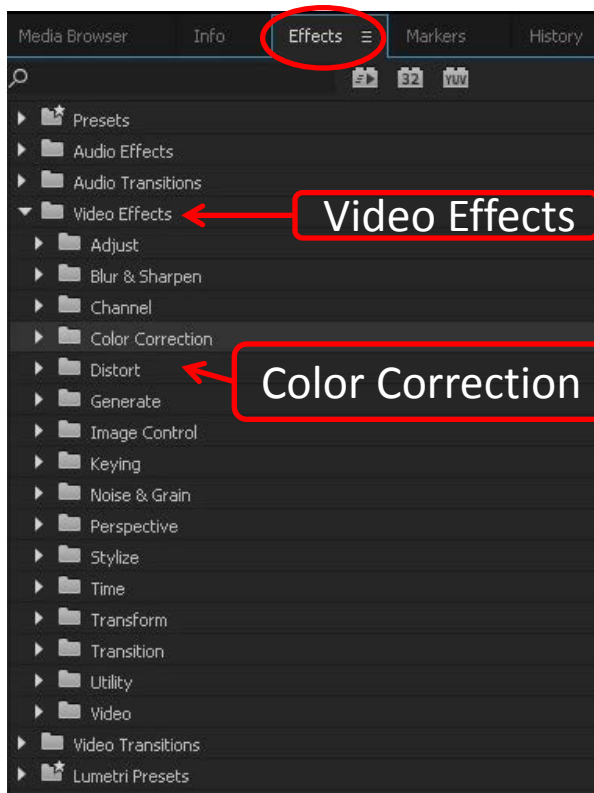
3) Open [Effects] tab.

**Once 3D LUT is registered, it can be added to “Presets”.
You can select it from the “Presets” for later work.**



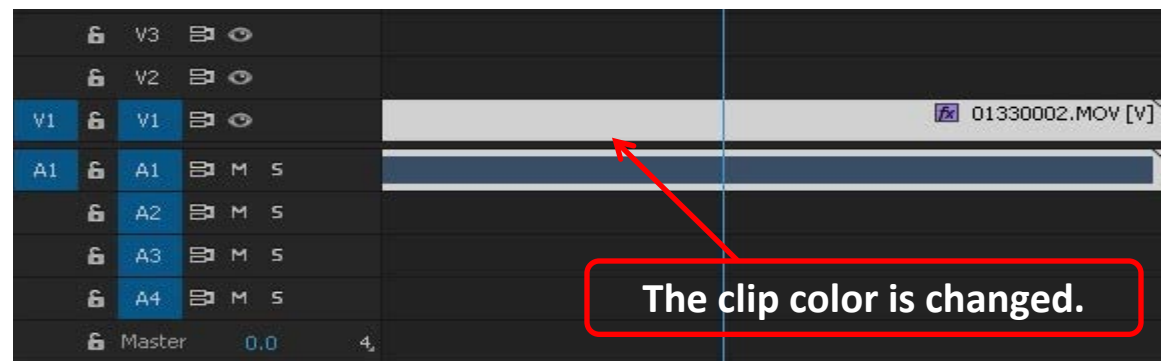
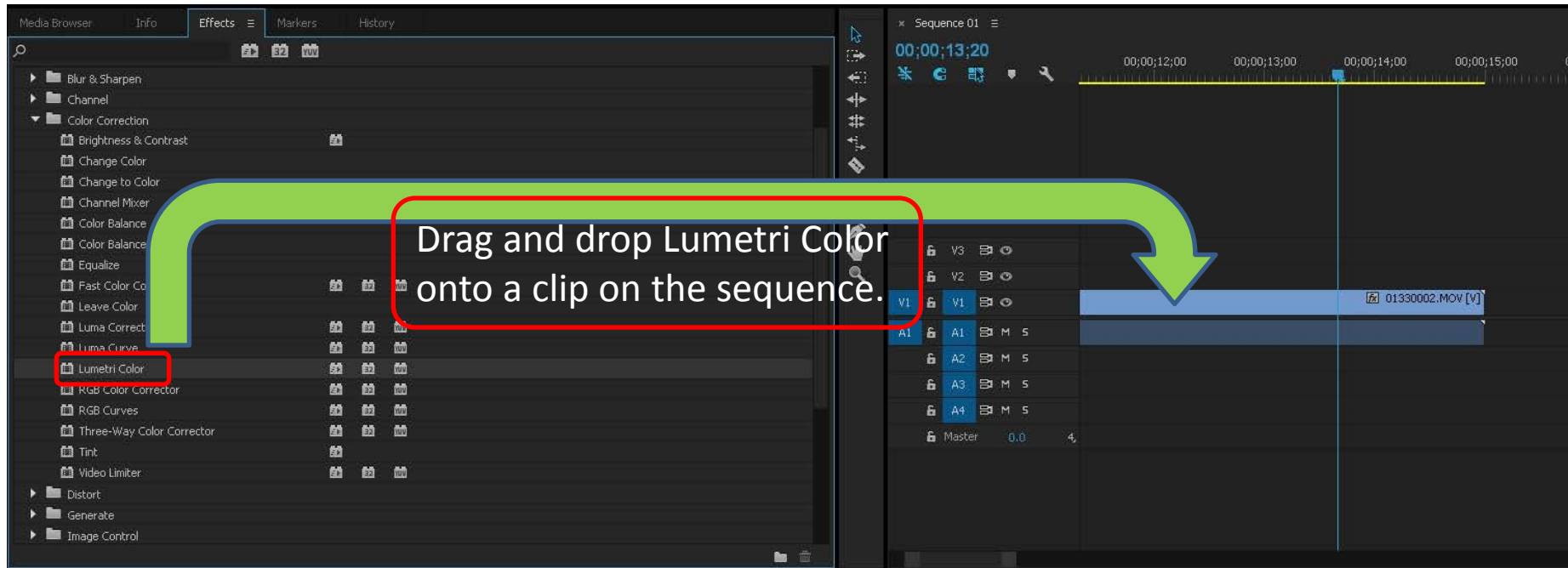
Guide to apply V-Log to V-709 3D LUT file to DVX200 V-Log L clip on Adobe Premiere Pro CC 2015

4) On [Effect] tab, select [Video Effects] > [Color Correction] > [Lumetri Color].



Guide to apply V-Log to V-709 3D LUT file to DVX200 V-Log L clip on Adobe Premiere Pro CC 2015

5) Drag & drop [Lumetri Color] onto a clip on the sequence.



Guide to apply V-Log to V-709 3D LUT file to DVX200 V-Log L clip on Adobe Premiere Pro CC 2015

6) Open [Effect Controls] tab on preview window.

7) Click [fx Lumetri Color] > [Basic Connection] , and select [Browse...] from [Input LUT] item.

The image shows a screenshot of the Adobe Premiere Pro CC 2015 interface. The 'Effect Controls' tab is selected, and the 'Lumetri Color' effect is applied to the clip. The 'Basic Correction' section is expanded, and the 'Input LUT' dropdown menu is open, showing a list of LUTs. The 'Browse...' option is highlighted, and a red box with the text 'Click.' points to it. A blue arrow points from the 'Click here.' text to the 'Browse...' option. The 'Lumetri Color' effect is also highlighted with a red box.

Effect Controls | Lumetri Scopes | Source: 01340002.MOV | Audio Clip Mixer: Sequence 01

Master * 01340002.MOV | Sequence 01 * 01340002.MOV | :00:00 | 00:00

Video Effects

- fx Motion
- fx Opacity
- fx Time Remapping
- fx Lumetri Color

fx Lumetri Color

Basic Correction

- Active
- Input LUT: None
- White Balance
- Temperature: 0.0
- Tint: 0.0
- Tone
- Exposure: 0.0
- Contrast: 0.0
- Highlights: 0.0
- Shadows: 0.0
- Whites: 0.0
- Blacks: 0.0
- Reset
- Auto
- Saturation: 100.0
- Creative

Click here.

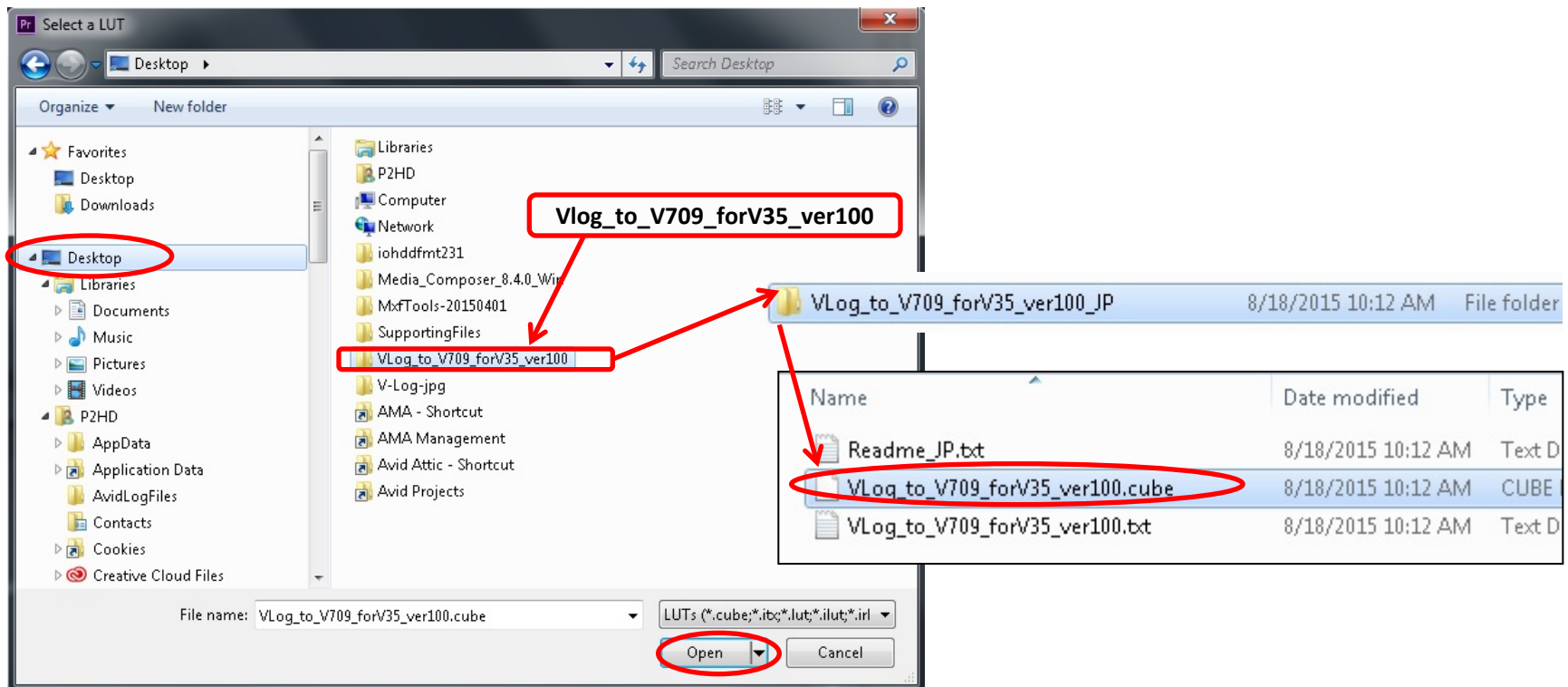
Click.

Browse...

- None
- [Custom]
- ALEXA_Default_LogC2Rec709
- AlexaV3_K1S1_LogC2Video_DCIP3_EE
- AlexaV3_K1S1_LogC2Video_Rec709_EE
- AMIRA_Default_LogC2Rec709
- ARRI ALEXA - SL - PROFILE
- ARRI_Universal_DCI
- ARRI_Universal_HD
- BMC DNXHD - SL - PROFILE
- BMC PRORES - SL - PROFILE
- BMC RAW 3200K - SL - PROFILE
- BMC RAW 5600K - SL - PROFILE
- CANON 1D C - SL - PROFILE
- CANON 5D - SL - PROFILE
- CANON 5D - UEX - SL - PROFILE
- CANON 7D - SL - PROFILE
- CANON 7D - UEX - SL - PROFILE

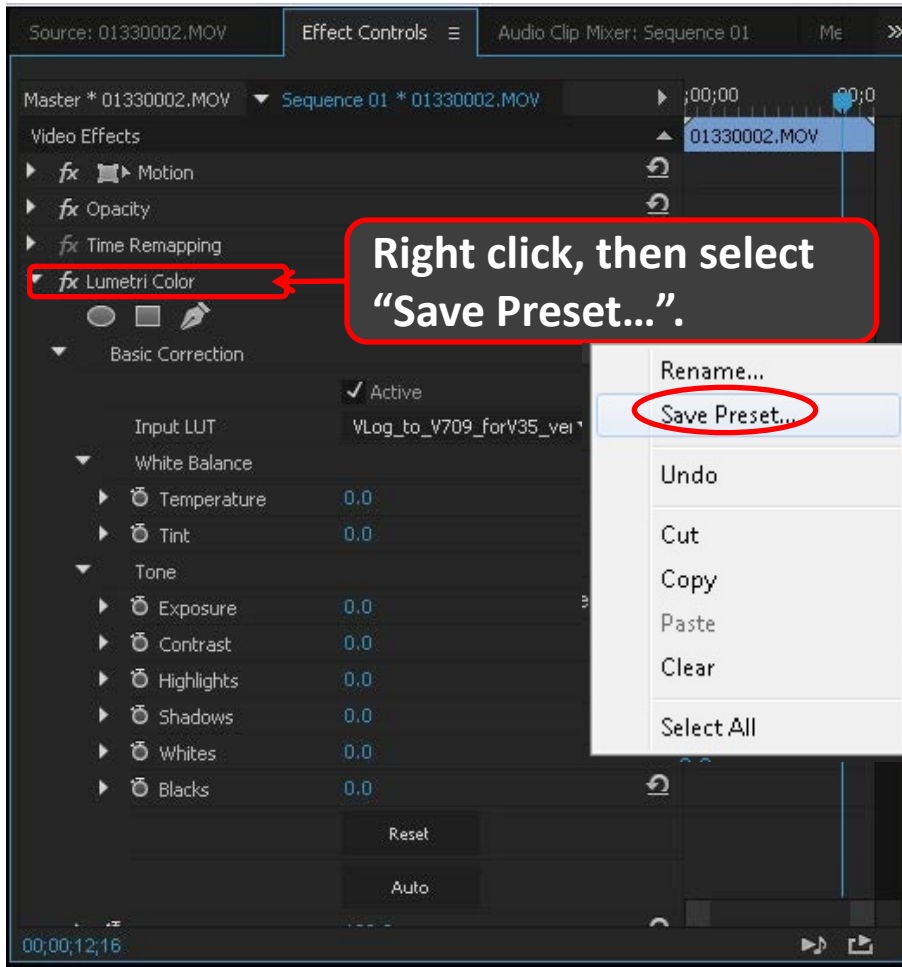
Guide to apply V-Log to V-709 3D LUT file to DVX200 V-Log L clip on Adobe Premiere Pro CC 2015

- 8) Open the downloaded “Vlog_to_V709_forV35_ver100” folder, and select .cube file.
- 9) Click [Open].

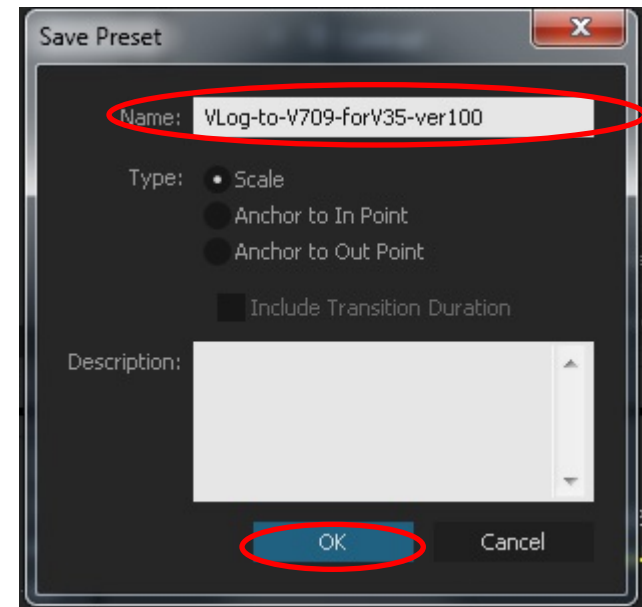


Guide to apply V-Log to V-709 3D LUT file to DVX200 V-Log L clip on Adobe Premiere Pro CC 2015

10) Store the file.

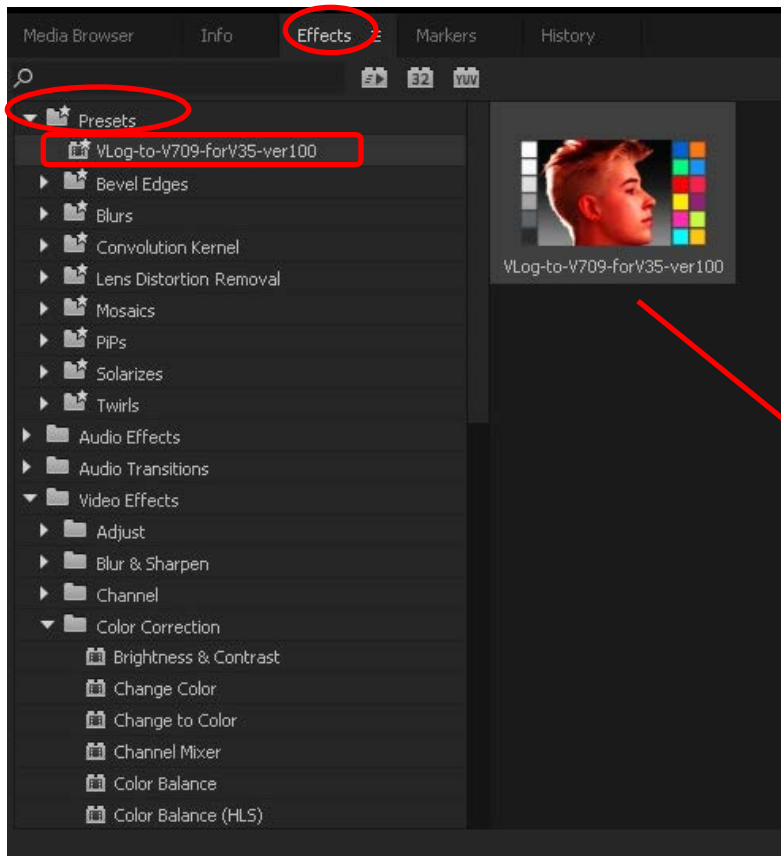


Enter any name to store.

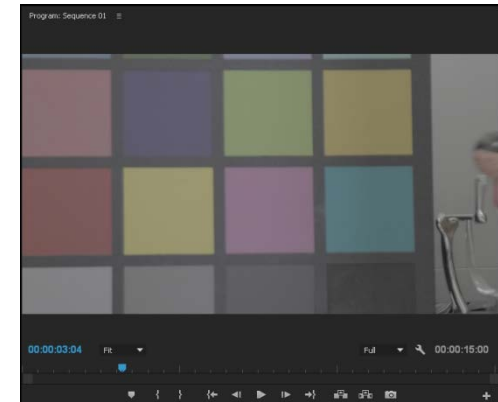


Guide to apply V-Log to V-709 3D LUT file to DVX200 V-Log L clip on Adobe Premiere Pro CC 2015

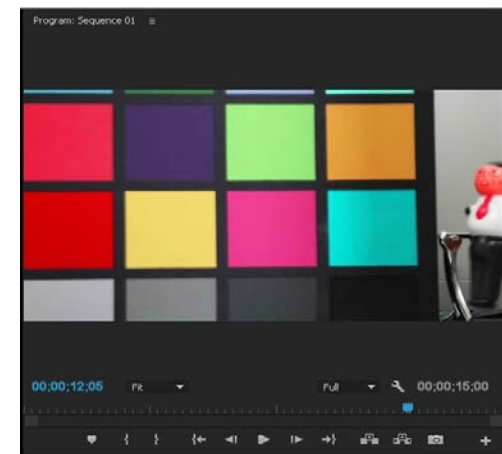
11) Now V-Log to V-709 3D LUT is registered in [Presets] of [Effects] as an icon.



V-Log L recording original clip without the 3D LUT.



V-Log L recording clip with the applied 3D LUT.



Guide to apply V-Log to V-709 3D LUT file to DVX200 V-Log L clip on Adobe Premiere Pro CC 2015

12) For the later work, you can utilize the preset to any V-Log L recording clip on a sequence.

[Effects] > [Presets] > registered LUT file.

