



Z Cam Cage

Our Z CAM E2 and E2 Flagship Cage is compatible with Z CAM E2, E2G, E2-S6, E2-F6, E2-F8 camera bodies. The unique, modular cage is comprised of 6 pieces - 2 Side Plates, 1 Top Plate, 1 Bottom Plate, a USB Clamp, and an HDMI Clamp. All of this weighs in at just under ½ lb! The Side Plates, Bottom Plate, and both clamps are all separate pieces that can be used independent of each other. The Top Plate uses screw ports in the Side Plates to mount securely and can only be used with both Side Plates in place.

The Top Plate attaches to the camera using a ¼ 20" screw and then connects to each Side Plate with a ¼ 20" screw. It has a built in Z-Rail, ¼ 20" screw holes and ARRI 3/8" accessory mount for attaching accessories. Each Side Plate has a built in Z-Rail, M6 Rosette and accepts any ARRI 3/8" accessory mount as well. The Bottom Plate attaches to the Z CAM cameras with two ¼ 20" screws and a locating pin. The Bottom Plate is Zacuto Polaris compatible (and Arca-Swiss compatible).

The USB Clamp and HDMI Clamp screw directly into the camera. These pieces can be purchased separately as well. This is a must have feature to protect your cabling and USB and HDMI port.

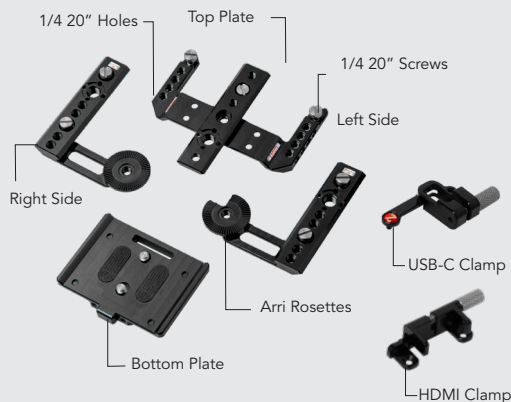
The Z-Rails built in to the top and sides of our Z CAM Cage makes it easy to mount a Top Handle or single or double Side Handles. Or, add our unique Zarn, a wooden ball handgrip! Add an SSD Holder to mount an SSD drive, add rods with a Polaris Baseplate, or mount your accessories with a Z-Rail Ball Mount. The possibilities are endless with the Zacuto Z CAM Cage.



Check out our tutorial videos at zacuto.com

Call us at
312-863-3456

Parts & Features



Optional Accessories



Assembling Your Cage

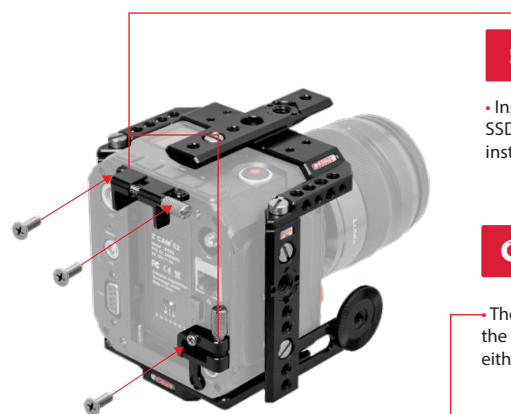
Step 1

- Install the bottom plate by screwing in the two 1/4"-20 screws to the bottom of the camera.



Step 2

- Install each side by screwing in the two 1/4"-20 screws on each side.



Step 3



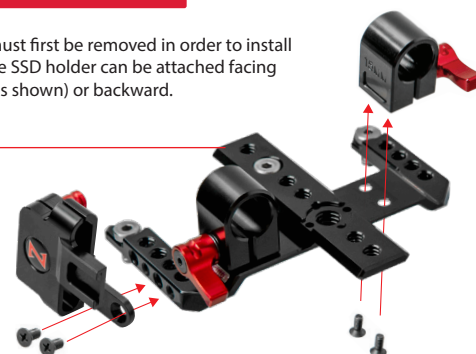
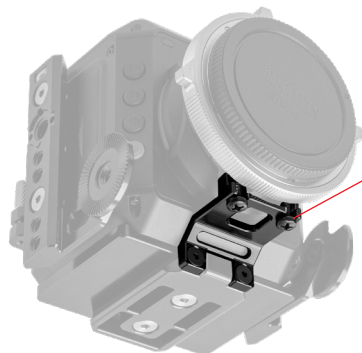
- Install the top by screwing in three 1/4"-20 screws, 1 into the top of the camera and 1 into the top of each side piece.

Step 4

- Install the HDMI and USB strain relief clamps. The SSD holder and rod lock accessories can only be installed in the screw holes shown.

Optional Steps

- The top plate must first be removed in order to install the rod locks. The SSD holder can be attached facing either forward (as shown) or backward.



- The optional metabones adapter for Canon EF mounts attaches to the bottom plate and metabones adapter using the provided screws. Remove the foot from the metabones mount before attaching to the camera.