

GRATICAL HD



Bright. Sharp. Brilliant.

The Gratical HD Micro-OLED Electronic Viewfinder
Full Digital Manual

ZACUTO

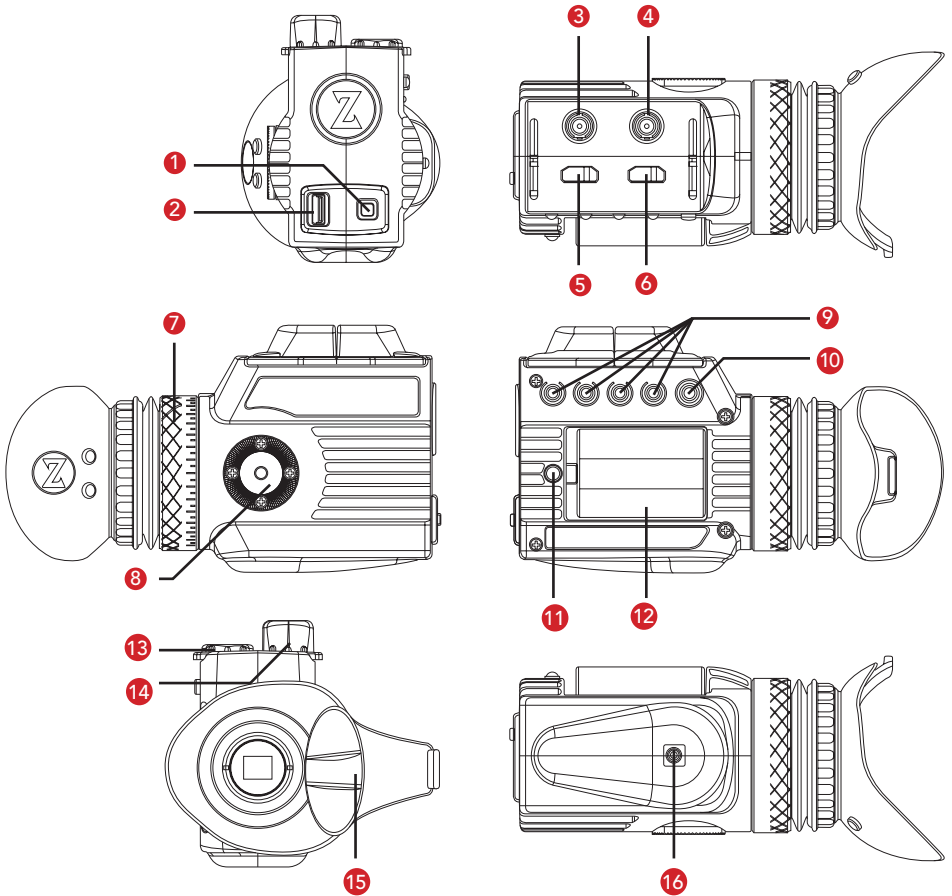


Table of Contents

Gratical Features	3
Included Components	4
Battery Usage.....	4
Power Sources.....	4
HDS/SDI & HDMI Connections.....	5
Operating Lens Door	5
Removing/ Installing Lens Protection	6
Operating Menus	7
Display Calibration	8
LUTs.....	9
Color Bars.....	10
Scopes	11
Scopes Settings	12
Overlays	13
False Color	13
Focus Assist (Red Line).....	14
Peaking.....	14
Exposure Assist (Zebras)	14
Frame Line.....	15
Time Code	15
Record Light.....	15
Meters.....	15
Menu Settings.....	16
Pixel to Pixel.....	16
DSLR Scaling.....	16
Anamorphic	18
Frame Store.....	18
Function Buttons	19
Lock Buttons	19
Update.....	20
About.....	20
Precautions.....	21
Limited Warranty	21

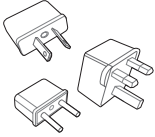
Gratical Features

- | | |
|-------------------------|----------------------------|
| 1. Power Button | 9. Function Buttons |
| 2. USB Port | 10. Joystick |
| 3. HDSDI Out | 11. Battery Release Button |
| 4. HDSDI In | 12. LP-E6 Battery |
| 5. HDMI Out | 13. HDMI Covers |
| 6. HDMI In | 14. HDSDI Covers |
| 7. Focusing Ring | 15. Lens Door |
| 8. Arri 1/4"-20 Rosette | 16. 1/4"-20 EVF Mount |

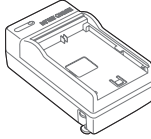


Included Components

3 AC Plug Adapters



Li-ion Battery Charger



Li-ion Battery LP-E6 Pack

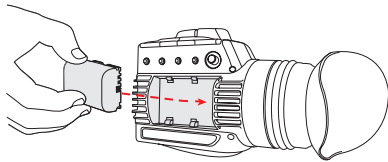
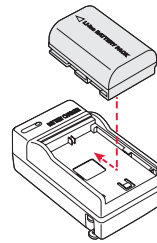


Battery Usage

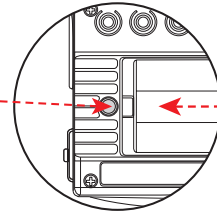
To ensure full runtime charge your battery before first use.

Note: Only use LP-E6 type batteries with the Gratical. Doing otherwise may damage the unit.

Insert the battery into the left side compartment of the Gratical. Slide to the right until locked in place. To remove the battery press the release button and slide the battery to the left of the case.



Release Button

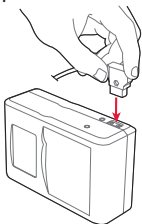
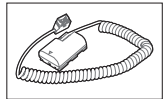


Using an External Power Source

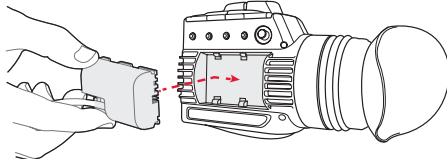
Optional equipment includes an External Battery Attachment with D-Tap and a compatible battery source.

Connect male D-Tap to power source.

PT-ZAC-E6

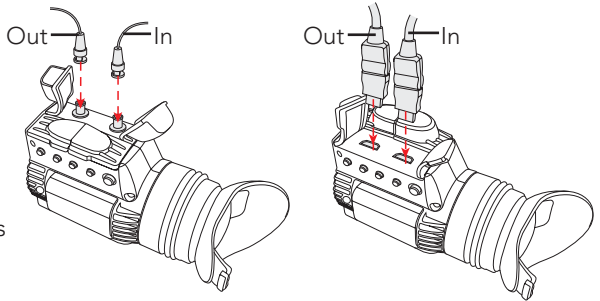


Slide Battery attachment into the Gratical.



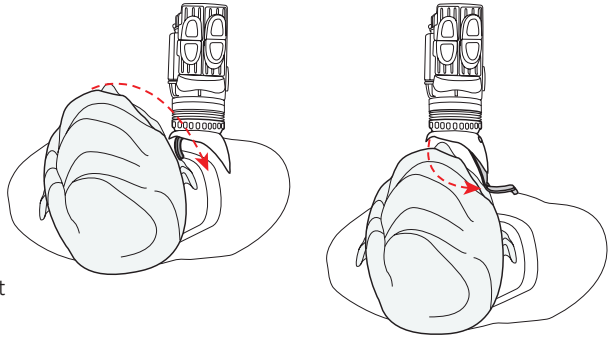
HDSDI and HDMI Connections

The Gratical HD includes two HDMI and two HDSDI ports with cross conversion from HDMI to HDSDI. Weather resistant covers prevent moisture or debris from getting in open ports.



Opening Eyecup Lens Door Hands Free

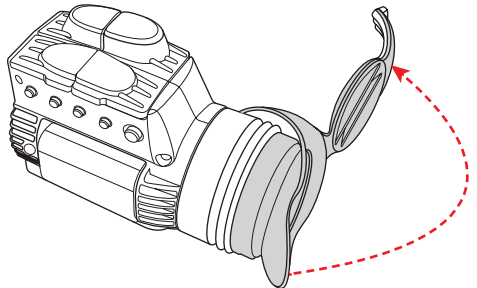
Position your head next to the lens door tab. Apply pressure with your head to the lens door tab, slide your head from left to right opening the door.



See video at www.zacuto.com/gratical-support

Opening Eyecup to keep Lens Door open

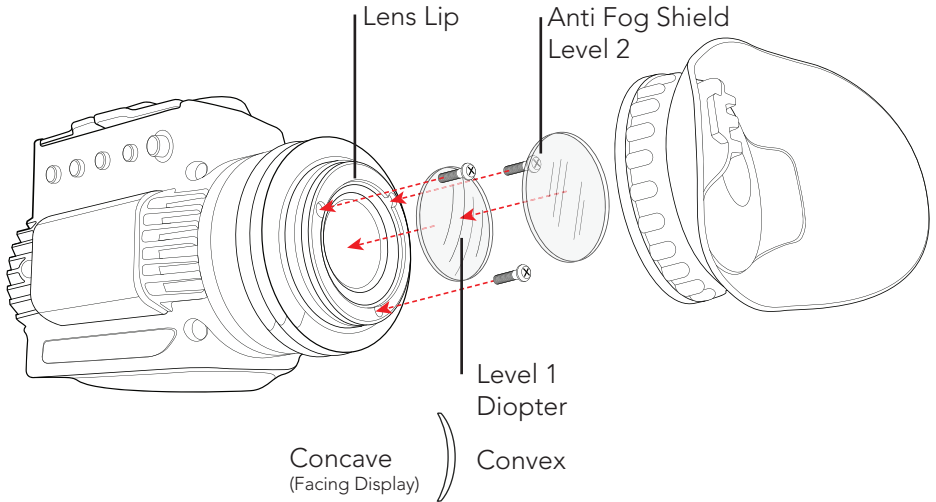
The Eyecup can be folded over on itself so that lens door remains open. Reminder: When the Lens Door does not automatically close your Gratical is exposed to the sun.



Removing & Installing Level 1 Fog Protection

Level 1 Fog Protection Anti-Fog Coated Diopter offers a mild fog protection. Good for average conditions, comes pre-installed.

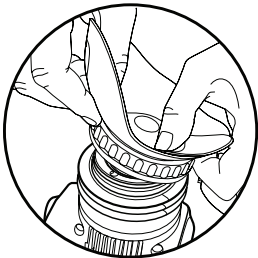
1. To replace the diopter, remove three Phillips screws and remove the diopter
2. Install new diopter and tighten 3 Phillips screws back into place.



Installing Level 2 Fog Protection

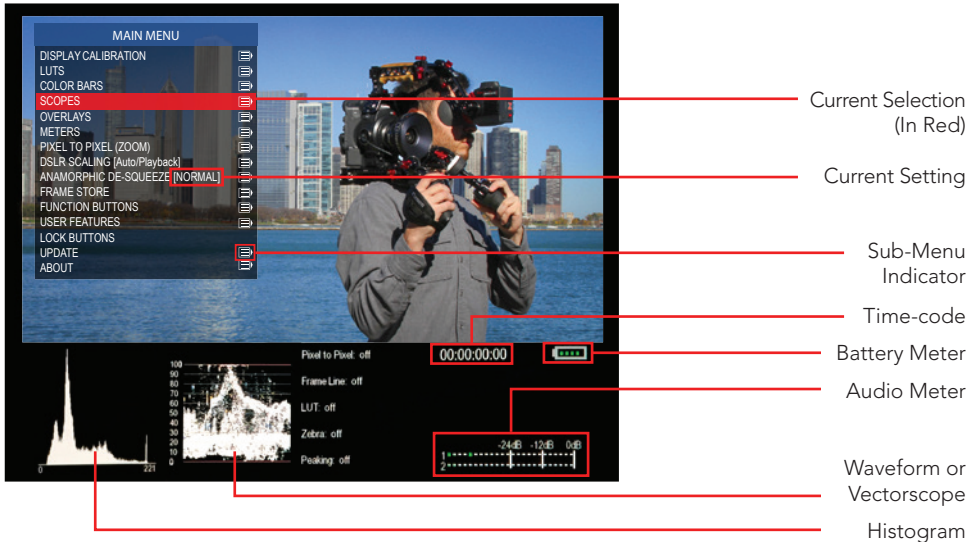
Level 2 Fog Protection Anti-Fog Shield offers extreme Fog protection. Included with Gratical, but does not come pre-installed.

1. To install Level 2 Fog Protection, peel off protective layer from both sides of the level 2 Fog protection. Lay on top of the lens lip and remount eyecup.



Place the Eyecup on one side of the Gratical Lens Lip, and then push down around the rest.

Operating Menus

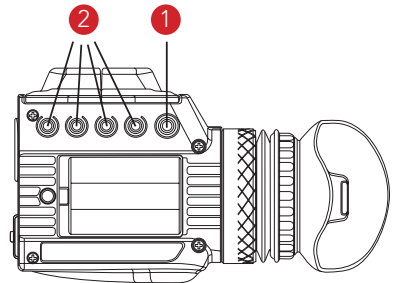


The menu screen reveals itself over the current video display to show real-time updates of changes made. Menu will disappear after 30 seconds of inactivity.

- To open menu press in joystick. Navigate menu using up, down, left, right. Press in to select. Left will return you to the previous menu or make the menu disappear when on main menu.

With the menu off, the Joystick can be pre-programmed with functions. (Defaults Listed Below) These Joystick functions can be changed through the menu.

- Up- Focus Assist
- Down- Battery Meter
- Left- None
- Right- Toggle Waveform / Vector

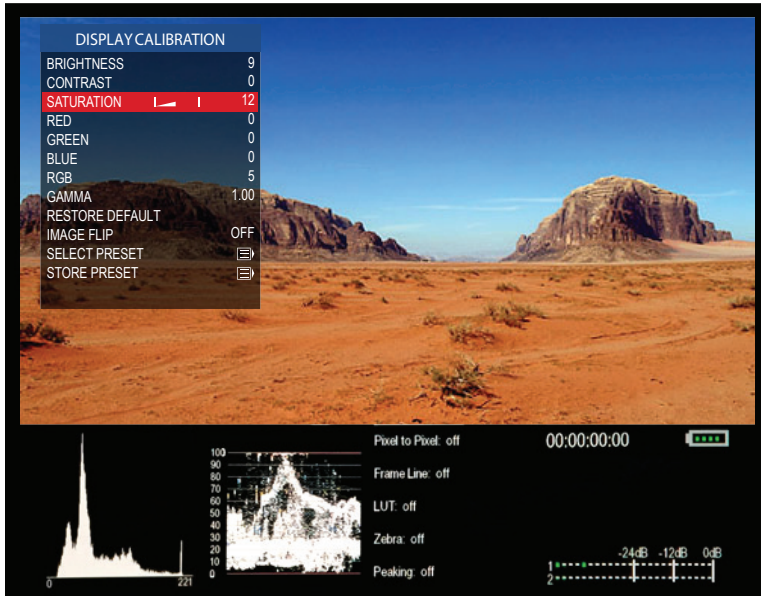


- F1 ○
- F2 ○
- F3 ○
- F4 ○

- F1- Toggle all Scopes ON/OFF
- F2- False Color
- F3- Exposure Assist (Zebras)
- F4- Pixel to Pixel

- The four function buttons on the side of the Gratocal can be programmed through your menu to assign a video processing feature for quick selection. These function buttons can only be used while the menu is off.

Display Calibration



Use these settings to adjust the calibration of the Micro OLED Display.

BRIGHTNESS:	[-100 to 100]
CONTRAST:	[-100 to 100]
RED:	[-100 to 100]
GREEN:	[-100 to 100]
BLUE:	[-100 to 100]
RGB:	[-100 to 100]
GAMMA:	[0.2 to 2.6]

- Your settings may be saved and recalled with the SAVE PRESET and RECALL PRESET functions.
- Select RESTORE DEFAULT to restore factory default settings.

LUTs



Import Custom LUT

- To import a custom LUT, insert a USB stick into the Gratical and select import custom LUT from the LUT menu. Select the LUT you wish to import from the list of available LUTs. Currently compatible with 1D LUTs (.cube, .csm file types)

Select Preset EVF LUT

- To use a preset LUT for the Gratical, select a LUT from the list of available preset LUTs.

Select Custom EVF LUT

- To select a custom LUT, you must first create or import a LUT to the Gratical. Once you have imported a custom LUT, select a LUT from the list available custom LUTs.

Select Preset SDI Out LUT

- To use a preset LUT for the SDI Out, select a LUT from the list available preset LUTs.

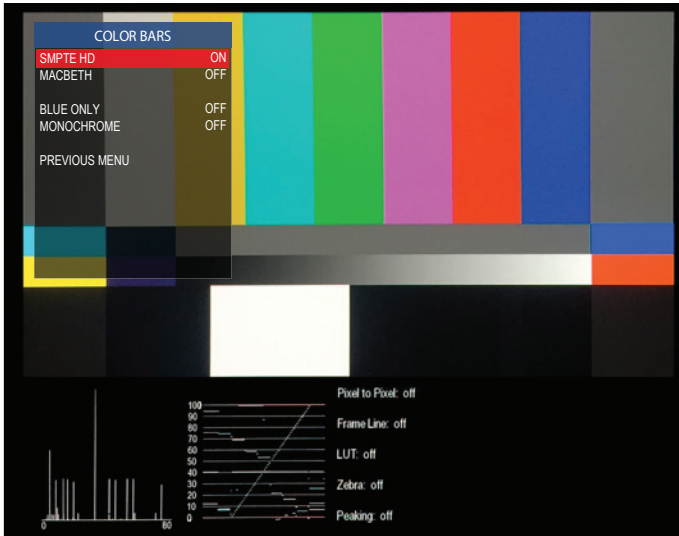
Select Custom SDI Out LUT

- To select a custom LUT, you must first import a LUT to the Gratical. Once you have imported a custom LUT, select a LUT from the list available custom LUTs.

Create LUT

- You can create your own LUT from within the CREATE CUSTOM LUT menu. Saved custom LUTs can be found in the SELECT CUSTOM LUT menu. Note that when preset LUTs have been selected, you will be able to see the values of those LUTs in the CREATE CUSTOM LUT menu. This allows you to tweak and modify the preset values. Saving an altered version of a preset LUT will not overwrite the original.

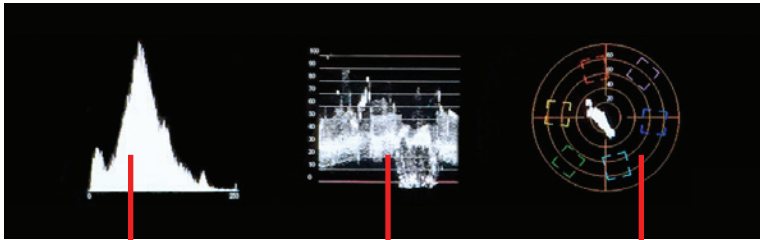
Color Bars



- The SMPTE HD, MACBETH, and BLUE ONLY features can be used to calibrate your Gratical.



Scopes



Histogram

Waveform

Vectorscope

The Gratical offers three different scopes: Histogram, Waveform, and Vectorscope.

Histogram

- (Luminance): The luma Histogram shows all luminance values in the image, from black to white.
- (RGB): The RGB Histogram shows histogram analyses for each color, Red, Green, Blue. This lets you compare the relative distribution of each color.
- (Scale): Select to show the histogram in a linear or logarithmic scale.

Waveform (Luminance):

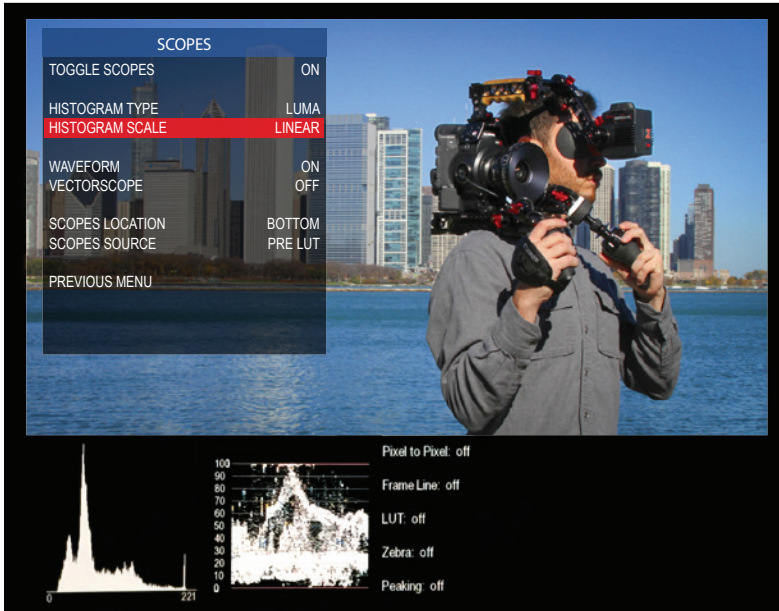
- Shows exposure in IRE at a given location in the image, left to right.

Vectorscope (Saturation):

- Measures the chrominance in the image, including saturation and hue.

Scope Settings

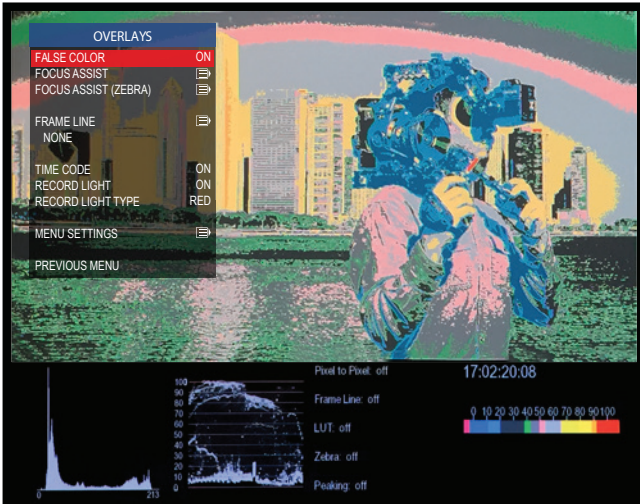
- **TOGGLE SCOPES:** Select to toggle scopes ON/OFF. All scopes off defaults image to the center.
- **WAVEFORM/VECTORSCOPE:** Select to toggle waveform or Vectorscope. Only one can be active at a time.



- **SCOPES LOCATION:** Select to change the location of the scopes. Scopes can be positioned on either the bottom or top of the image.
- **SCOPES SOURCE:** The scopes can reflect data based on the raw input signal from the camera, pre LUT, or from a LUT applied image, POST LUT.
- See Function Buttons Section p18 to assign to a function button.

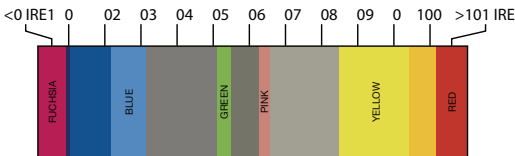
Overlays

Note that all overlay features can only see pre LUT applied image. When using a LUT, these features will work off the original, non LUT image.



False Color

- Select FALSE COLOR to see feature ON/OFF.
- Use False Color to aid in obtaining the correct exposure of your scene.
- The chart below may be used as a key to determine which area of your frame are overexposed, underexposed, or exposed properly.



- Overexposed: Objects will be displayed RED.
- Properly Exposed: Objects will display in Pinks and Greens.
- Underexposed: Objects will display Blue to Dark Blue.
- See Function Buttons Section p18 to assign to a function button.

Focus Assist (Red-Line)

- Select RED-LINE ENABLE to see feature ON/OFF.
- Select COLOR to change the color of the focus assist lines.
- Select LEVEL to change the intensity of the focus assist lines.



PEAKING

- PEAKING ENABLE: Select to toggle ON/OFF.

Exposure Assist (Zebras)

- ENABLE Select to see feature ON/OFF.
- Select the HIGH IRE LEVEL to change the exposure level at which the zebra lines will appear. This value must be higher than the LOW IRE LEVEL value or you will receive a Zebra setting error.
- Select the HIGH COLOR to change the color of the HIGH IRE LEVEL zebra lines.
- Select the LOW IRE LEVEL to change the exposure level at which the zebra lines will appear.
- Select the LOW COLOR to change the color of the LOW IRE LEVEL zebra lines.
- LOW IRE +/-: Select to adjust the range of the LOW IRE zebra, 1-25.
- See Function Buttons Section p18 to assign to a function button.



Frame Line

- Select to choose the frame lines and/or action safe lines you wish to overlay on the image.



Time Code

- **TIME CODE:** Select to Toggle time code ON/OFF (SDI only feature)

Record Light

- **RECORD LIGHT:** Select to toggle record light ON/OFF. This is an SDI only feature and your camera must have a record light trigger enabled in its menu for the Gratical to detect it.
- **RECORD LIGHT TYPE:** Select the appropriate camera manufacturer for the type of camera you are using: Canon, Sony, RED. If your camera manufacturer is not listed you can attempt to use one of the three previously mentioned, or you can use the TIMECODE option. Please note that using the TIMECODE option while your camera is set to free run time code may cause the record light to also activate.



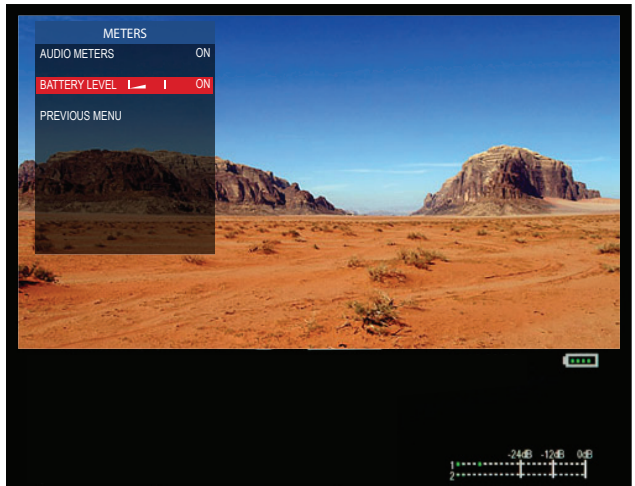
Menu Settings

- **MENU LOCATION:**
Select to move the menu to one of six locations.
- **MENU TRANSPARENCY:**
Select to set the menu transparency, 1-5



Meters (Audio & Battery)

- **AUDIO METERS:** Select to toggle the Audio Meters ON/OFF.
- **BATTERY LEVEL:** Select to toggle Battery Meter ON/OFF



Pixel to Pixel

- Select ENABLE to see feature On/Off. While ON, use the joystick to scroll around the image.
- Select CENTER to re-center the picture while zoomed in.
- Select PAN to change the number of pixels at which you will scroll while zoomed in.
- See Function Buttons Section p18 to assign to a function button.



DSLR Scaling

- AUTO/PLAYBACK allows the EVF to scale and format the image by automatically detecting the camera's output (Default)
- Choose CAMERA PRESETS to activate an included camera preset.
- When creating a user preset, the ACTIVE VIDEO (Red Line) represents what will be shown full frame on the screen while the FRAME LINE (Green Line) tells the Gratical where the picture area of the recorded video image will be.
- Creating a user preset may be useful if you are trying to view camera data on the screen while it's scaled.



Anamorphic

- Select the anamorphic de-squeeze factor corresponding to your lens.



Frame Store

- Toggle Show ON/OFF to display the stored frame in the selected memory bank. If no frame has been stored in the selected bank, a warning message will appear "Frame (X) has not been stored!"
- Within SHOW STYLE you may choose for the saved frame to be overlaid as OPAQUE or TRANSP allowing you to match up your live video with the stored frame.
- Toggle the CAPTURE menu to ON and you will be promoted with a message "Press any Function button to store frame..." Press a Function button on the side of the EVF and a frame from the current video on screen will be stored to the next available memory bank.
- See Function Buttons Section p18 to assign to a function button.



Function Buttons

- The Gratical has eight function buttons that can be assigned by the user. These include the four buttons (F1, F2, F3, F4) and the four directions of the joystick (UP, DOWN, LEFT, RIGHT). Function buttons come preprogrammed but can be changed at any time.
- To change the function assigned to each button, select the function button you wish to change. From the subsequent menu, choose the desired function you wish to be assigned to the function button. It can now be activated by pressing the appropriate function button on the side of the Gratical without the use of the menu system.
- Function buttons can only be used when the menu is not displayed.



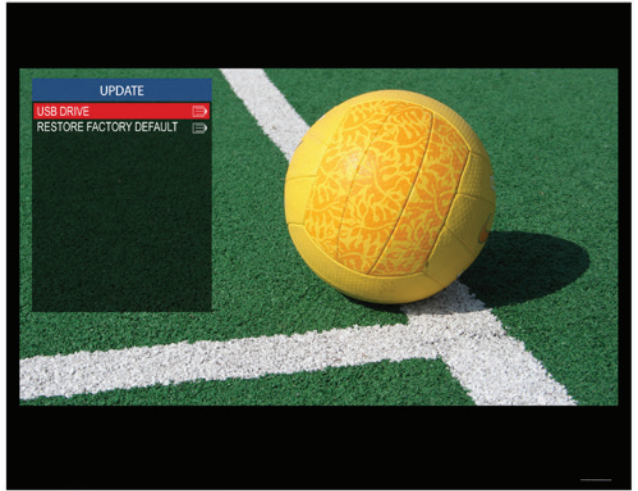
Lock Buttons

- Select to lock the Gratical's buttons. While locked, the buttons will not respond to user input. To unlock, push in the joystick and hold for 5 seconds.



Update

- To update your Gratical with the latest firmware, first format your USB thumb drive to FAT32 on a PC, MD-DOS on a Mac.
- Download the firmware update from www.zacuto.com.
- Insert your USB drive into the Gratical's USB port, select UPDATE from the menu and select USB DRIVE. Select START UPDATE and follow the on screen instructions. The current firmware version can be confirmed in the ABOUT menu.

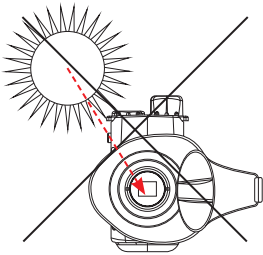


About

- Choose ABOUT to view the EVF firmware version on your device.
- SYSTEM INFO is used for developer and debugging.



Gratical Precautions



- OLED displays can be affected by burn in or image retention if a static image is displayed for prolonged periods of time. We advise that you use the Gratical's scopes instead of the camera's whenever possible and shut off the overlay camera data when it is not needed.
- Do not allow sunlight to enter the Gratical. The light can be magnified by the lens and potentially cause damage to the Gratical screen.
- Do not use batteries, power cords, or accessories that are not specified for use with this product. Use only LP-E6 batteries or equivalent.
- Do not store the product in a dusty, humid or hot environment as damage may occur.
- When the product is mounted on a camera, do not lift or move the camera by grabbing the product. This may cause damage to the product or the camera mount.
- This product is not waterproof. If the product is dropped in water, do not turn on the unit. Contact Zacuto for service.
- Do not attempt to power another device by using the Gratical as a power source.
- To report bugs, features, and ideas please contact zacuto.

Limited Warranty

Zacuto USA electronic devices come with a limited one year hardware warranty. The limited hardware warranty covers defects in workmanship and materials of our products for up to one year. This warranty does not cover any damage to this product that results from improper installation, accidents, abuse, misuse, negligence, natural disaster, insufficient or excessive electrical supply (if applies), abnormal mechanical or environmental conditions, dust or any unauthorized disassembly, repair or modification.

For more support call us at 888-294-FILM
or email us at sales@zacuto.com