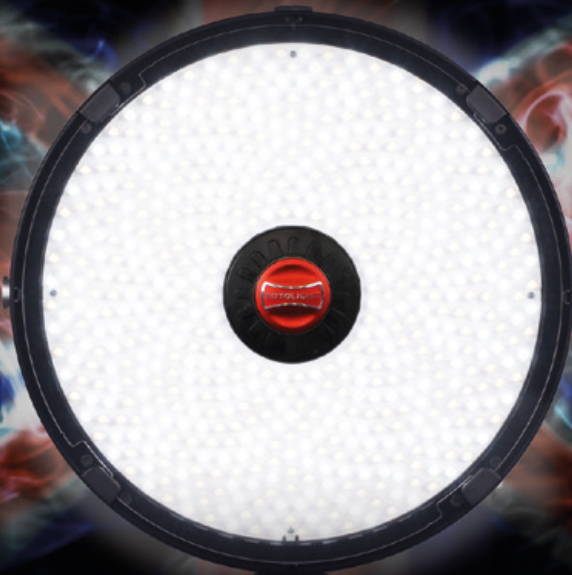




USER MANUAL



Version 1.2



PAGE CONTENTS

- 2-3 Contents, Functions & Operation Flowchart.
- 4-5 In action & Result Shots.
- 6 Basic Operation Mode.
- 7 Basic Operation Mode (Bri/Col).
- 8-9 Advanced Operation | Flash Mode.
- 10-11 High Speed Sync | F-Stop Table.
- 12-13 Display | In-Action Shots.
- 14-15 SFX | CINESFX™.
- 16-17 Strobe, Lightning, Throb, Cycle, Fire.
- 18-19 Police, Television.
- 20-21 Michael Kelly & Bridget Regan lit by Mark Mann
- 22-23 F-DIM, Control, DMX, Tech.
- 24-25 Volt, Calibrated Custom Colour Mode, Temperature, Firmware Version, Demo Mode.
- 26-27 Technical Specification, Rotolight LED TLCI Test Result, Photometrics, CRI Test.
- 28-29 Filter Information, Mounting
- 30-31 Batteries, Manufacturers Warranty, Limitation of Liability, AEOS Optional Accessories.

BOX CONTENTS

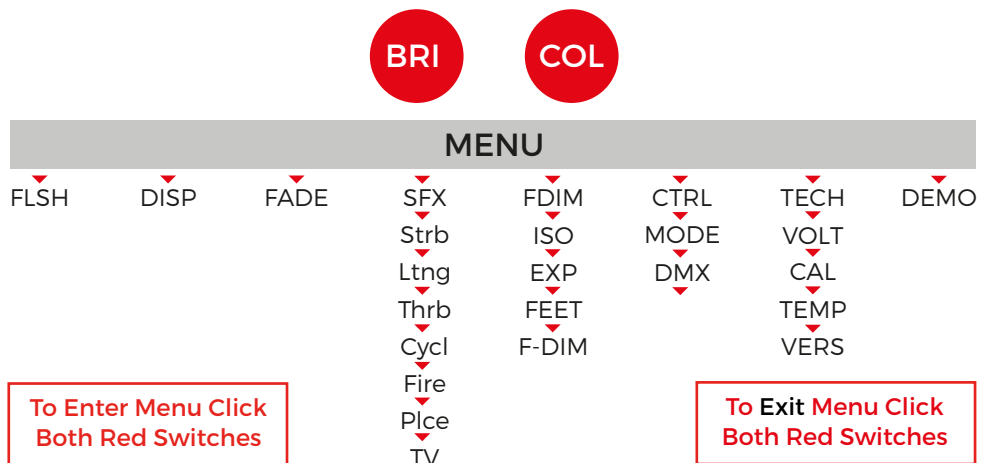
- 1 x Rotolight AEOS™
- 1 x Professional Aluminium Ball Head (Supports 5Kg load)
- 1 x Rotolight Universal power adapter with regional mains cable
- 1 x Filter Holder
- 1 x AEOS™ Filter pack:
 - 1 x 216 Full Diffuser (1.5 Stops)
 - 1 x 250 Medium, Half White Diffuser (3/4 Stops)
 - 1 x 184 "Cosmetic Peach" Diffusion
 - 1 x 279 1/8th Minus Green (Magenta)

Thank you for purchasing Rotolight AEOS! We hope you enjoy using it as much as we enjoyed making it!

**Please register to activate your warranty at
www.rotolight.com/register**



OPERATION FLOWCHART





“The ultimate light for portrait / location photographers. Powerful yet portable, AEOS enables you to get shots no-one else can”

Jason Lanier - Sony Artisan of Imagery





Photo by Jason Lanier www.jasonlanier.com



AEOS BASIC OPERATION

To operate AEOS you will find two red rotary controls, which are also switches, and a DC on/off switch, these are all located on the rear of AEOS.



POWER

AEOS can be powered by 1 x V-Lock battery, DC from the supplied AC mains Adapter or from a DC source in the range of 7v -15v (i.e. optional Car 12v Socket, or D-TAP from a broadcast battery). When connecting a power source to the DC input socket, for instance mains adapter or an optional D-Tap to DC connection, the V-Lock battery is automatically disconnected, thus saving battery power. NB if you are connecting an external DC source make sure the power is the correct polarity, to avoid damaging your AEOS. We recommend using Rotolight RL-Batt-95, 95mWh V-Lock batteries (available from Rotolight.com) which will run your AEOS for up to 3 hours at full power.

To power up AEOS click the power switch (located above the 'FLASH' input Jack)

On power up, you will see 'ROTOLIGHT AEOS' scroll across the screen, you can interrupt this anytime by operating one of the control knobs.

To power AEOS down, click the power switch again. NB - AEOS stores all the user settings in non-volatile RAM so it will remember your last used settings.

RESET

You can reset all the user parameters in AEOS non-volatile memory by holding down the left red control switch whilst simultaneously powering AEOS ON.



The word 'ZERO' will be displayed, select Y for yes (reset all data), or N for NO.

BASIC OPERATION MODE (BRI / COL)



('BRI') BRIGHTNESS

You can adjust the brightness output of AEOS by rotating the left control knob.

If you rotate the knob quickly it will speed up the data input. You can press and rotate to deliberately adjust the brightness in steps of 10% (Fast Mode). Simply rotating the knob will adjust the brightness in steps of 1%.

AEOS has a dimming range of 0% -100% and is completely flicker free at any brightness level, shutter speed or frame rate.

(NB There is a special mode called 'True Aperture Dimming' (F-DIM), available in the MENU section, which will display the brightness as an F-Stop, based on your camera exposure settings – see 'True Aperture Dimming')



('COL') COLOUR

You can adjust and accurately display the Colour Temperature (CCT) of AEOS by rotating the right control knob.

If you rotate the knob quickly it will speed up the data input. You can press and rotate to deliberately adjust the colour in steps of 100 kelvin (Fast Mode). Simply rotating the knob will adjust the brightness in steps of 10 kelvin.

AEOS has a Colour Temperature Range of 3150 kelvin (Tungsten) up to 6300 kelvin (reflected daylight sky).

Note : For maximum brightness, as a Bi Colour light, AEOS will be brightest at the 'mid point' colour : 4200 Kelvin, where both sets of LEDs are at full power. This also applies in flash mode.

AEOS has a special technology called 'Dynamic Drift Stabilisation™' which maintains the colour temperature through the entire dimming range.



(MENU) ADVANCED OPERATION

You can enter the MENU by pressing both red control switches together (or clicking and holding down the left switch followed by the right control switch). If you wish to leave MENU at any time, you can return to the basic operation (BRI / COL) by pressing both red control switches together again.

In 'MENU' Mode the left rotary control is Navigation, and the left switch takes you 'back' one level. The right rotary encoder is 'value/data entry' and the right switch is 'activate/go/enter/start/trigger' depending on the menu position.

In the MENU there are eight optional submenus , through which you navigate by rotating the left knob:

'FLSH', 'DISP', 'FADE', 'SFX', 'F-DIM', "CTRL", 'TECH', 'DEMO'

You can select/enter your desired sub menu function by clicking the Right switch

You can leave the selected function by clicking the Left switch, alternatively you can return to the basic operation mode (BRI /COL) at any time by pressing both switches together at the same time.



('FLSH') FLASH MODE

Scroll to 'FLSH' Click the right switch to enter 'FLSH' mode.

Note: in order to use the Flash, you must be IN flash mode (indicated by shutter speed on the display. If you see word 'FLSH', you are not IN flash mode and must right click to ENTER flash mode)

Set your Camera to Manual flash mode

AEOS is not a TTL flash, it is a Manual Flash with adjustable flash power, modelling light, colour temperature and duration settings. **Simple operation: set your camera into Manual flash mode, refer to the F stop table (p.11) for exposure guide, take a test shot and either adjust flash power, or distance to the subject to achieve optimal exposure.**

Rotate the left knob to set the desired '**Modelling Light**' level in order to preview your shadow and highlights on your subject (in %, 0-100%) . You can use the modelling light to compose your photograph, or set different levels for multiple AEOS lights, and have them flash together retaining the relative set levels in 'X8' or 'X16' mode
(Note : AEOS is intentionally less bright whilst in modelling light mode than regular continuous light mode, in order to make the light more comfortable for the subject)

Press, hold AND rotate the left knob to set the desired '**Colour Temperature**' for your flash (in kelvin, from 3150-6300k – *Note: as a bi-colour light, the flash will be at its brightest at 4200K*)

Rotate the right knob to set the desired **duration** for the flash, in shutter intervals, i.e. 1/50s, 1/60s, 1/80s, 1/100s...up to 1/2500s ('1/2K5s').

Press, hold and rotate the right hand knob to set the flash output power, 'MAX' (=250% of MAX continuous output), '1/2' (=125%), '1/4' (=62%), 'X8' (=modelling light level x 8), and 'X16' (= modelling light level x 16)

Finally connect a flash receiver or transceiver which has a PC sync output, with a PC sync cable to the 3.5mm mono jack FLASH Trigger input jack located on the rear of AEOS below the DC Switch. Place the trigger on top of your camera shoe. Alternatively for wired operation, connect a long PC sync cable from your camera's PC sync port to the 3.5mm mono jack on the AEOS.

NOTE: AEOS does not have a built in receiver, you must use an external trigger/receiver system such as Phottix, Sony, Pocket Wizard, etc.

Recommended settings for simple one-light operation:

- 1) Set flash power to MAX
- 2) Set flash duration to 1/50th (any faster shutter speed ie 1/100th will be automatically captured)
- 3) Set colour temp (Kelvin) to 4200K



Shooting in High Speed Sync

AEOS is a High Speed Sync(HSS) capable flash. High speed sync allows you to utilize the flash of AEOS, at speeds faster than your camera's native internal sync speed (typically 1/125 or 1/250th).

AEOS will happily work with any camera and any trigger/receiver with a PC sync input, however to shoot in High Speed Sync a) your camera must itself be capable of HSS (many are not), and b) you must use a HSS capable trigger and receiver (most trigger/receivers are not natively HSS compatible unless explicitly stated).

*** PLEASE CHECK THAT YOUR CAMERA AND TRIGGER EQUIPMENT IS CAPABLE OF HIGH SPEED SYNC.**

Recommended triggers :

Phottix ODIN II (HSS) – Canon, Nikon, Sony
PocketWizard (HSS) : FlexTT5, and FlexTT6 support High Speed Sync (HSS) for Canon and FP Sync for Nikon.
Cactus VI II (HSS) : Canon, Nikon, Pentax, Olympus, Panasonic
Cactus VI IIS(HSS) : Sony
Phottix ARES (not HSS) – Canon, Nikon, Sony
Pocketwizard (not HSS) : Other models

NOTE : AEOS will flash once for the duration set shutter interval when syncing in HSS, ensuring that the complete frame is illuminated. If AEOS detects a flash re-trigger event during a set interval, it will automatically adjust the duration of the flash to a shorter interval, to avoid damage occurring to the LEDs.

AEOS supports flash at ANY frame rate, flash output can be up to 250% of the nominal maximum continuous light output (>14,750 Lux at 3 feet or Guide Number 27).

To Exit Flash Mode

Click the left switch to return to MENU, alternatively you can return to the basic operation (BRI / COL) by pressing both control switches together.

AEOS F STOP table in FLASH MODE (measured at midpoint colour 4300K)

Distance (ft)	3ft			6ft			9ft			12 ft			15ft		
ISO	F-stop Continuous mode	F-stop FLASH mode	Guide Number (GN)	F-stop Continuous mode	F-stop FLASH mode	Guide Number (GN)	F-stop Continuous mode	F-stop FLASH mode	Guide Number (GN)	F-stop Continuous mode	F-stop FLASH mode	Guide Number (GN)	F-stop Continuous mode	F-stop FLASH mode	Guide Number (GN)
100	5.6	8	24	2.8	4.0	24	2	2.8	25.2	1.4	2	24	1.2	1.8	27
200	8	11	33	4	5.6	33.6	2.8	4	36	2	2.8	33.6	1.8	2.4	36
400	11	15	45	5.6	8.0	48	4	5.6	50.4	2.8	4	48	2.4	3.3	49.5
800	15	22	66	8	11.0	66	5.6	8	72	4	5.6	67.2	3.3	4.8	72
1600	22	30	90	11	16.0	96	8	11	99	5.6	8	96	4.8	6.5	97.5
2500	27	38	114	14	20.0	120	10	14	126	8	10	120	5.6	8	120

Shutter speed = 1/60th

Measured at midpoint colour temperature 4300Kelvin with Sekonic flash meter, no modifiers or intensifiers used.



('DISP') DISPLAY

Allows the display to be set to low brightness or 'off' to reduce power consumption/increase battery life or for discrete usage on set.

Click the right switch to enter 'DISP'

Rotate the left knob to select the display mode:

'High' - the display will be at full brightness

'Low' - the display will be dim, reduced power consumption

'Off' - The display will automatically switch off after 5 seconds unless a control is operated for maximum power saving or discretion on set.

Click the left switch to return to MENU, alternatively you can return to the basic operation (BRI / COL) by pressing both control switches together.

('FADE') DESIGNER FADE™

(Programmable fade up / fade down for practical 'in-camera' production fade effects)

Scroll to 'FADE'

Click the right switch to enter 'FADE' mode

Rotate the right knob to adjust the fade duration



Lit with 1 x Rotolight
AEOS, Sony A6300,
Sony 10-18mm,
ISO 100, F4.0,
1/15th(tripod)



(range is up to 12 seconds up or down)
(It will display DN (=fade down) followed by a numerical value 'X's where X = seconds of fade duration)

The fade can be from 1 to 12 seconds long.

Please note, the FADE will be a fade to zero from the current brightness level the AEOS is set to (i.e. if brightness is currently 80%, then fade will be 80%-0% over custom time duration).

(NB: both the last used brightness setting and fade duration parameter are stored in non volatile memory)

Once you have selected the length of the fade, click the right switch to perform the fade (you can also trigger the fade using an external flash trigger via the FLASH sync port).

You will notice the display now shows UP X s (i.e. it will now fade up to your previous brightness setting over 'X' seconds)

To fade up click the Right switch again

If you only want Fade downs use the Left switch to click out of FADE and click back in – use the Right switch to perform the Fade.

Click the left switch to return to MENU, alternatively you can return to the basic operation menu (BRI / COL) by pressing both control switches together.



('SFX') CINEMATIC SPECIAL EFFECTS

In collaboration with Stefan Lange, DOP and Visual FX Veteran, we have created an arsenal of Cinematographic Special FX (CineSFX™), these production tools are designed to complement your feature/ music video/short film.

SFX Brightness and Colour Temperature :

Please note, the current 'BRI' brightness level and 'COL' colour temperature setting of AEOS is used by SFX mode to represent the 'peak output' level of each effect, enabling accurate metering (i.e. if AEOS is set to 75% brightness and 5600 Kelvin, then the lightning effect peak brightness level shall be 75% brightness at 5600 Kelvin).

Therefore, to ensure maximum SFX brightness, set AEOS to 100% brightness and 4300 Kelvin for maximum brightness in SFX mode.

To adjust the colour temperature of the light to better match your desired effect, i.e. for 'Fire', set the 'COL' to 3150kelvin, for 'TV' set the 'COL' to '6000k', for Lightning' set the 'COL' to 6300k. To do this, once you have selected your desired SFX (**ie FIRE**), **press hold AND rotate the right knob to set the desired 'Colour Temperature' (in kelvin, from 3150-6300k)**. To similarly adjust the peak (maximum) brightness level of your desired effect, once you have selected your desired effect press, hold & rotate the left knob.



WARNING - HEALTH HAZARD - USE STROBE WITH CAUTION: CineSFX™ mode uses Strobe Lighting effects that may pose a risk to those at risk of photosensitive seizures/ epilepsy. Manufacturer accepts no liability or responsibility for misuse of this product. You should take all precautions to pre-warn and ensure the safety of those who may come into contact with the product. If you or any of your relatives have a history of seizures or epilepsy, consult a doctor before using. If you feel unwell from using these effects, immediately discontinue use and consult a doctor. If strobe lighting is to be used in a production, warnings should be posted at the front of house or entrance doors to the set/theater as well as in a video or program, if distributed. Example: "WARNING: Strobe lights are used during this performance". This product is not suitable for use by children of any age and is designed for professional use only.



('SFX') CINEMATIC SPECIAL EFFECTS (CineSFX™)

Click the Right switch to enter 'SFX'

Rotating the left knob cycles through the available 'SFX':-'Strb' - 'Ltnng' - 'Thrb' - 'Cycl' - 'Fire' - 'Plce' - 'TV'

You can activate your selected SFX function by clicking the Right switch

You can leave the selected function by clicking the left switch, alternatively you can return to the basic operation mode (BRI /COL) at any time by pressing both switches together at the same time.



('Strb') STROBE

The Strobe effect produces a regular flashing light, you can control the speed

Click the right switch to activate the strobe effect, Rotate the right knob to adjust the strobe speed (It will display XX hz, where= 'XX' = number of strobe cycles per second). The strobe range is from 0.3hz up to 7hz. (NB: the last used strobe parameters are stored in non volatile memory). Rotate the left knob to adjust the 'duty cycle' (flash duration) to eliminate any issues with rolling shutter cameras (This is known as 'Rolling Shutter Compensation') where you can match the light flashes to match the Shutter Speed and/or Frame Rate of your camera, to avoid unlit portions of the image/frame. Click the left switch to exit the Strobe Menu and return to SFX Menu.



('Ltng') LIGHTNING

The lightning effect simulates real lightning, it is a random effect but you can control the speed at which the lightning bursts re-occur, and because this is a stroboscopic effect you can also adjust the 'Rolling Shutter Compensation', and this effect is triggerable. Ideally you would set the brightness (BRI) to 100% and the colour (COL) temperature to 6000k.

Click the right switch to activate the lightning effect Rotate the right knob to adjust the lightning cluster re-occurrence speed.

(It will display XX hz which is an indication of the effect frequency) The lightning range is from 1hz up to 50hz.

Click the right switch to arm the effect and fade to black, 'Trig' will be displayed - re-click the right switch to trigger the effect (you can also use a flash trigger connected to the 'FLASH' port jack to trigger and stop the lighting).

Rotate the left knob to adjust the 'duty cycle' (flash duration) to eliminate any issues with rolling shutter cameras. (NB: the last used lightning parameters are stored in non volatile memory).

Click the left control switch to exit the lightning

effect and return to SFX Menu.

(NB the duration of the lightning flashes is 20ms which is the recommended duration for cinematography. The lightning strikes come in bursts of between 2 and 8 random length pulses)



('Thrb') THROB

Throb is a regular smoothly pulsing light.

Click the right switch to activate the 'Throb' effect.

Rotate either the left or right knob to adjust the 'Throb' effect frequency

(It will display XX hz which is an indication of the effect frequency). The Throb range is from 1hz up to 50hz. (NB: the Throb parameters are stored in non volatile memory). Click the left switch to exit the Throb effect and return to SFX Menu.



('Cycl') Colour CYCLE

Cycle is a regular smoothly pulsing light which fades between the tungsten and blue LEDs

Click the right switch to activate the 'Colour CYCLE' effect.

Rotate either the left or right knob to adjust the 'Cycle' effect frequency (It will display XX hz which is an indication of the effect frequency)

The Cycle range is from 1hz up to 50hz. (NB: the Cycle parameters are stored in non volatile memory). Click the left switch to exit the Cycle effect and return to SFX Menu.



('Fire') FIRE

Fire is a complex emulation of a burning fire and it can be tuned to your requirements. Some VFX artists like to use multiple lights with slightly different settings/gels to achieve a fire with 'dancing shadows' and stereoscopic characteristics.

NB Before activating the Fire effect it is a good idea to adjust the 'COL' colour to 3150 kelvin.

You can meter 'AEOS' output which will be your peak exposure during the Fire effect.

Click the right switch to activate the 'Fire' effect.

Rotate either the right knob to adjust the 'Fire' effect frequency (It will display XX hz which is an indication of the effect frequency - around 45hz is nice for a 'campfire').

Rotate either the left knob to adjust the 'Fire' effect depth threshold (residual glow) (about 35% is nice for a 'campfire')

(It will display XX % which is an indication of the effect depth).

Inside the fire effect there is a switchable parameter called 'ColourSwing BLUE' which emulates the colour transition of flames going up the chimney (i.e. from yellow to blue), to activate this parameter click the right button ('BLUE' is displayed).

To deactivate 'Colour Swing BLUE' click the right knob again and 'MONO' (Monochrome) will be displayed.

(NB: the Fire parameters are stored in non volatile memory)

The fire effect can be enhanced with a warm colour filter included within the optional add on Colour FX Pack (RL-AEOS-CFP) available from your dealer or www.Rotolight.com ('205' LED CTO is recommended for best impact, '182' Light Red also works well, or an Amber, CT Straw or other CTO filter).



('Plce') POLICE

This effect is an emulation of an emergency services light - it works best by adding the 712 Bedford Blue, or '182' Light Red Filter Gel included within the optional Add On Colour FX Pack.

Click the right switch to activate the Police effect
Rotate either the left or right knob to adjust the Police beacon speed

(It will display XX hz , which will give you an indication of the effect speed)

(NB: the Police parameters are stored in non volatile memory). Click the left switch to exit the Police effect and return to SFX Menu.



('TV') TELEVISION

This effect is an emulation of someone watching a TV show - it works best by setting the 'COL' colour to around 6000kelvin to emulate the light from a cathode ray tube.

Click the right switch to activate the TV effect. Rotate either the left or right knob to adjust the TV effect speed (It will display XX hz , which will give you an indication of the effect speed).

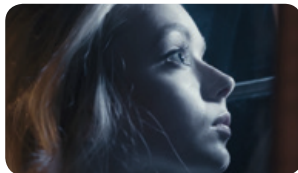
Click the right switch to pause the effect / fade to black - 'Trig' will be displayed - re-click the right switch again to Trigger the effect. (you can also use an external flash trigger to trigger the TV effect, just connect this to the 'FLASH' sync port on the rear of AEOS)

(NB: the TV parameters are stored in non volatile memory). Click the left switch to exit the TV effect and return to SFX Menu.

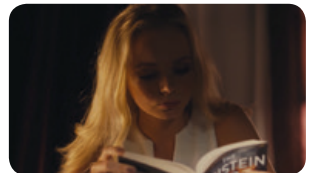
Click the left switch to return to MENU, alternatively you can return to the basic operation (BRI / COL) by pressing both control switches together.



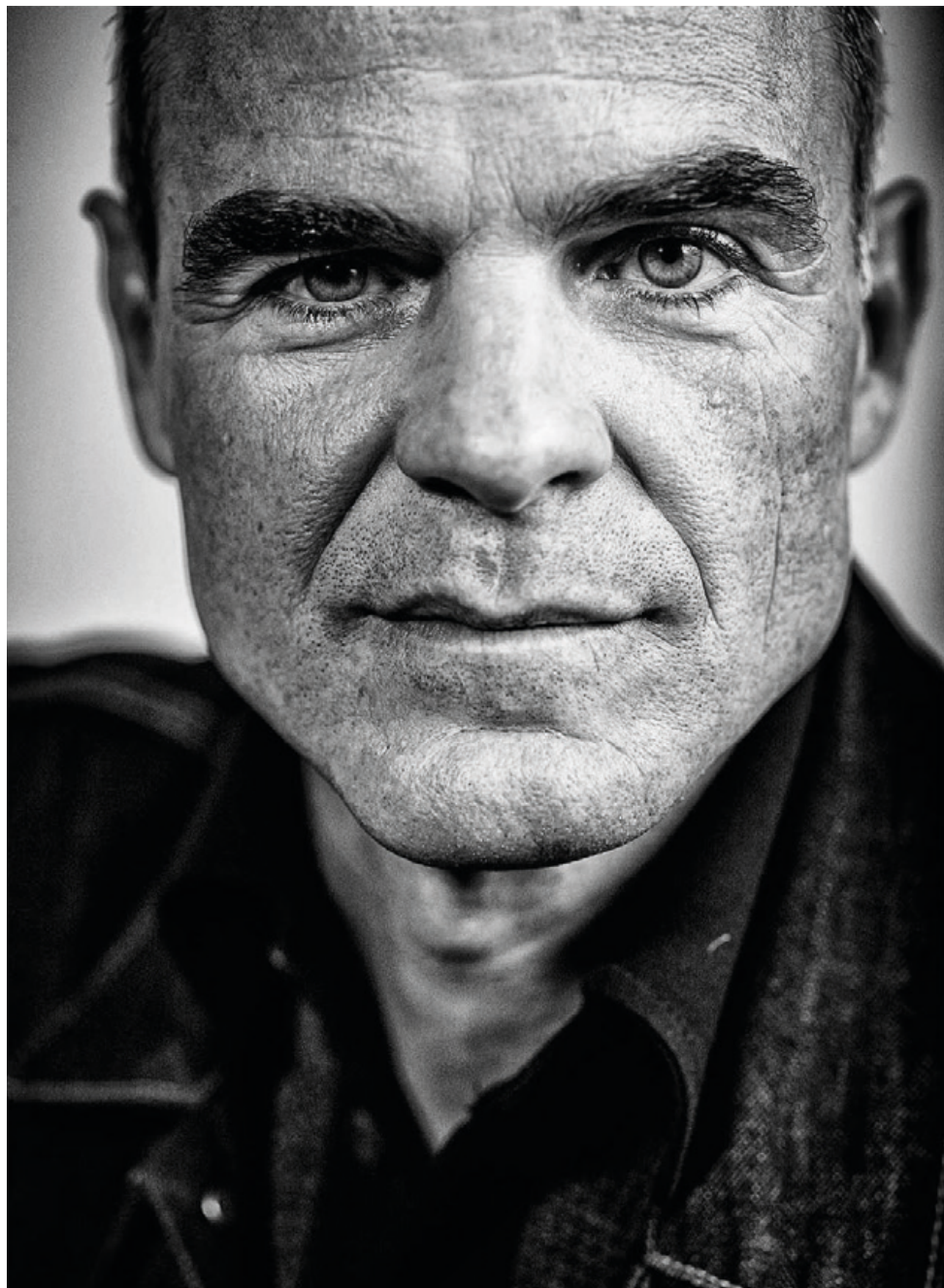
TV SIMULATION



LIGHTNING



FIRE



MICHAEL KELLY, STAR OF HIT SHOW 'HOUSE OF CARDS'

Lit by Rotolight AEOS, Photo by Mark Mann for DEADLINE



BRIDGET REGAN, STAR OF TV SHOW 'BILLIONS'

Lit by Rotolight AEOS, Photo by Mark Mann for DEADLINE



('F-DIM') TRUE APERTURE DIMMING™

(Shows the brightness setting as an accurately calculated aperture (F-Stop) for your subject at a given distance).

Cycle the menu to 'F-DIM' then click the right switch to enter 'F-DIM' mode.

Rotating the left knob cycles through the available user parameters:

'ISO' (your camera ISO setting), 'EXP' (your camera shutter speed) and 'FEET' (the distance from the light to your subject in feet).

Rotating the right knob will adjust the selected user parameter (ISO/EXP/FEET).

Clicking the right switch will enter the 'F-Stop Dimming Display' where the brightness is dynamically displayed as an aperture or 'F-Stop' (True Aperture Dimming continued).

Adjust the brightness with the right knob and the display will show the adjusted F-Stop aperture for your camera.

(Please note the 'True Aperture Dimming™' algorithm calculates the F-Stop based on the AEOS Brightness setting, your camera's ISO and shutter speed, the distance to the subject AND compensates for the skin contrast of the subject)

To re-adjust the last selected parameter (usually FEET) click the right switch, make the adjustment, then click the right switch again to return to the 'F-Stop Dimming Display', alternatively rotate the left knob to select a different parameter to edit, and then click the right switch to re-enter 'F-Stop Dimming Display'.

This enables you to effectively 'bookmark' the user parameter that is dynamically changing during your shoot (i.e. distance to subject), and without needing to re-meter the shot, update the parameter and calculate the revised F-STOP, allowing you to work fast.

You can also choose to work in reverse, i.e. you creatively choose an Aperture (i.e. f-3.0) and match your light to your camera exposure settings, this way all the photos from your shoot will have the same grain structure/depth of field/etc. This is a novel and very useful way of working creatively and also can save a lot of time.

Click the left switch to return to MENU, alternatively you can return to the basic operation (BRI / COL) by pressing both control switches together.



('CNTL') CONTROL

(In 'CNTL' submenu, you can change the control mode from local or DMX, and set the active DMX channels for 'BRI' and 'COL').

In 'MENU', Navigate to 'CNTL' using the left knob.

Click the right switch to enter 'CNTL'.

'MODE' is displayed, select using the right switch, click the right switch to select Local Control ('loc') or DMX slave mode ('dmx').

Exit to MENU by pressing left switch.



To set the DMX active channels navigate to 'DMX' by rotating left knob, select using right click, 'bri' will be displayed, use right switch to enter then rotate right knob to change DMX channel value for 'bri', when set press left switch. Rotate left knob to navigate to 'col', right click to select, then adjust DMX channel for colour temperature by rotating right knob. Once set, use left switch to exit (default 'bri' DMX channel is 1, default 'col' DMX channel is 2) to exit to MENU press left switch twice.



('TECH') TECHNICAL UTILITIES MENU

(In 'TECH' submenu you can monitor battery voltage, set up a custom calibrated colour, monitor the operating temperature, or check the firmware version)



('VOLT') VOLTAGE

VOLT mode will scroll display the voltage from the selected power source. (e.g '9.4V BATTERY' or '15.2V DC IN'). Please note AEOS will automatically give you a warning if the voltage drops too low which indicates a battery change is needed (e.g. 'Low Battery'). AEOS will also put a blinking dot on the bottom right of the current display to indicate Low Battery Voltage whilst reducing the output by progressive steps of 10% until voltage stabilises to eliminate flicker.

AEOS will operate from 6V DC up to 17.5V DC. Only connect external power sources with the correct polarity and voltage to avoid serious damage to AEOS.

(In 'VOLT' mode, to check your battery performance in action, you can click the right switch and then rotate the left knob to observe the actual battery voltage during the range of dimming)

Click the left switch to return to MENU, alternatively you can return to the basic operation (BRI / COL) by pressing both control switches together.



('CAL') CALIBRATED CUSTOM COLOUR MODE

Click the right switch to enter 'CAL' mode. The two rotary knobs individually control the Blue channel LEDs ('b' XX), or the yellow channel LEDs ('y' XX).

You can now set very specific colours by balancing the two colour channels, within an expanded range of colour from 2800 kelvin up to 7200 kelvin. This custom colour value is held as an operating preset whilst you operate the AEOS, but will be reset if you power the unit down.

It is very useful to have an accurate colorimeter (such as a Sekonic C-700) to create these custom colours.

Click the left switch to return to MENU, alternatively you can return to the basic operation (BRI / COL) by pressing both control switches together.



('TEMP') TEMPERATURE

Click the left switch to display the internal operating Temperature of AEOS. **NB: if AEOS detects the battery temperature rising to 58 degrees or above, it will display 'Too Hot' (touch any knob to clear message) and automatically cut the output down to 25% to prevent overheating.**

(Please use only quality battery systems with AEOS, such as the Rotolight LionHeart 95mWh V-Lock, which will drive the light at full continuous power for up to 3 hours).

Click the left switch to return to MENU, alternatively you can return to the basic operation (BRI / COL) by pressing both control switches together.



('VERS') FIRMWARE VERSION

Click the left switch to display the firmware version installed in your AEOS.

(NB: The firmware can be updated if required by your Rotolight Distributor via the update port on the back of AEOS)

Click the left switch to return to MENU, alternatively you can return to the basic operation (BRI / COL) by pressing both control switches together.



('DEMO') DEMO MODE

(Use this to let AEOS automatically demonstrate a selection of its unique capabilities, mainly useful for retail stores).

Set a desired brightness and base colour temperature using 'BRI / COL'.

Enter MENU then navigate to 'DEMO' by rotating the left knob.

Select 'DEMO' by clicking the right knob.

AEOS will now demonstrate a range of effects from its library, whilst simultaneously explaining what is being demoed on the red display.

Click the left switch to return to MENU, alternatively you can return to the basic operation (BRI / COL) by pressing both control switches together.

TECHNICAL SPECIFICATION

ROTOLIGHT AEOS	
BEAM ANGLE	50 Degree
TLCI (Television Lighting Consistency Index)	91 - Approved for live broadcast without correction - "errors are so small a colorist would not consider correcting them"
OVERALL CRI (Ra) SKINTONE CRI (R15)	CRI => 96 (Skintone R15, CRI=98)
POWER CONSUMPTION @100% OUTPUT	42 Watts @100% Output 15 V DC
LUX at 3FT(0.9m) F-STOP at ISO 200/400/800	5750 * f11 / f15 / f22
LUX at 6FT(1.82m) F-STOP at ISO 200/400/800	1295 * f5.6 / f8 / f11
LUX at 9FT(2.74m) F-STOP at ISO 200/400/800	614 * f4 / f5.6 / f8
CONTROL	Local or DMX, with Dynamic Drift Compensation and Thermal Monitoring
WEIGHT	1.4 Kg (body only) 1.7 Kg inc 360° Ball Head
DIMENSIONS	Diameter 295mm (11.5") x Depth 20mm (<1")
MOUNTING	Integral 1/4" - 20 tripod mounts, aluminium handles, 360° Pro ball head (3/8 or 1/4" 20)
PEAK OUTPUT	5750Lux at 3ft (measured at midpoint of 4400 Lux)
LUMINOUS FLUX	3051 Lumens (15Ft)
COLOUR RANGE	3150K-6300K
INCLUDED FILTERS	216 - Full Diffuser, 250 - Half Diffuser 184 - Cosmetic peach Skin Tone 279 - 1/8 Magenta

* Fstop's measured in FLASH mode

ROTOLIGHT LED TLCI TEST RESULT

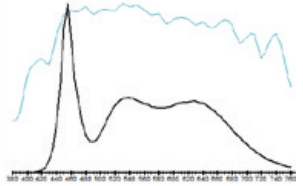
Rotolight LED (5600): CCT = D5478 (-2.1)

TLCI-2012 : 91 (D5478)

EBU : TLCI-2012
Alan Roberts - Oc



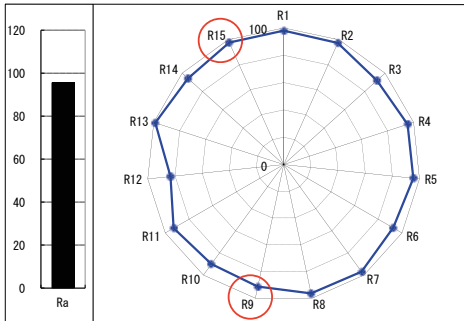
Sector	Lightness	Chroma	Hue
R	0	0	0
R/Y	0	0	-
Y	0	-	-
Y/G	0	-	0
G	0	-	+
G/C	0	0	+
C	+	0	0
C/B	+	0	---
B	0	--	---
B/M	0	--	0
M	0	0	0
M/R	0	0	0



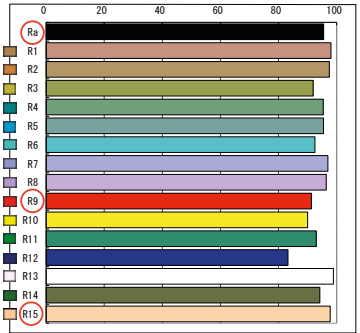
PHOTOMETRICS

FIXTURE	LED Angle	3 ft. / 0.9m		6 ft. / 1.82m		9 ft. / 2.74m	
AEOS (at mid point 4400K)	50°	534fc	5750 lx	120fc	1295 lx	57fc	614 lx

CRI TEST



CRI 96



x	y	Tap(JIS)	div(JIS)	Peak Wavele	Ra	R1	R2	R3	R4	R5	R6	R7	R8	R9	R10	R11	R12	R13	R14	R15
0.3890	0.3885	3700	-0.0063	456	96	98	97	92	95	95	93	97	96	96	90	93	83	99	94	98

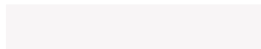


FILTER INFORMATION

A filter holder is included with AEOS. Simply place your desired filter underneath the filter holder, then using both thumbs, rotate the filter holder into a locking position on the front cover the AEOS light (you will hear a positive 'click' to indicate locked). To unlock, rotate in the other direction. AEOS's filters are 269mm diameter and have a 40.5mm hole in the centre, so its easy to cut your own.

You may combine multiple filters should you so wish (for example Diffuser + Colour FX). Utilizing diffusion filters will not affect the colour temperature of the light setting.

AEOS includes a standard filter pack comprising :-



216 Strong Full Diffusion to soften light output and shadows. 1.5 stop light loss.



250 Half Diffusion to soften light output & shadows, great for portraits. 3/4 stop light loss.

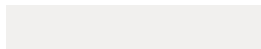


184 'Cosmetic Peach'
(Cosmetic diffuser for softer skin tones, great for portraits and video interviews)



279 1/8th Magenta (or Minus Green) adds magenta to match to fluorescent/tungsten lighting or enhance 'pinker' skin tone (if desired).

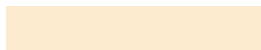
There is an **optional add on 'Colour Filter Pack'** which is highly recommended for photography, and for use in conjunction with CineSFX™ mode.



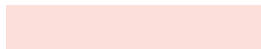
255 'Hollywood Frost'
(Soft gentle Diffuser with minimal light loss)



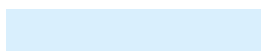
791 'Moroccan Frost'
(warm Cosmetic Diffuser to soften and warm darker skin tones)



103 Straw (Light sunshine FX, or subtle Fill/Hair Light FX)



162 'Bastard Amber'
(warm amber Fill/Hair light. e.g. sunshine)



202 '1/2 CT Blue'
(great for use with 'Lightning' FX)

205 LED '1/2 CTO'
(great for enhancing 'Fire' FX)

The optional 'Colour Filter Pack' (RL-AEOS-CFP) also includes the following four popular colour FX filters :-

219 'Fluorescent Green'
(Great for simulating 'nasty' Fluorescent, abandoned buildings or a TV glow, as used on 'Die Hard 4')

712 'Bedford Blue'
(Excellent for Blonde hair light, or "Police" light SFX)

128 'Bright Pink'
(Excellent as a hair light for Brunette or darker hair types)

182 'Light Red'
(Excellent as a hair light for Brunette, or as a red 'Cop Car Light')

MOUNTING

AEOS has two tripod mounting (1/4"-20) standard mounting sockets, positioned at the top and bottom of its circumference so AEOS can mount directly onto standard light stands, tripods or arms. These are also used to attach accessories like the barn doors and to mount the light. AEOS has two handles and can be easily hand held by an assistant on a shoot allowing incredible versatility and access to get shots from unusual angles.

There is a large 360 degree mount adapter included with AEOS. This gives AEOS a range of motion previously unheard of for an LED fixture (even with barn doors). The 360 Ball Head has both removable 3/8th, and 1/4-20 mounting holes so will fit a full range of lighting stands and mounting accessories. AEOS is compatible with all the Rotolight RL48 mounting accessories (foam handle, magic arm and clamp kits).

AEOS is incredibly portable at just 1.4KG, but a V-lock battery shall increase the weight. If you wish to further the weight including battery, consider



27

using a compact V-Lock battery, like a Rotolight (RL-BATT-95) remotely from the light, in a belt pouch (RL48-ABP) with a d-TAP DC cable.

BATTERIES

AEOS does not include a battery as standard. AEOS will operate from any third party “V-mount” battery with a DC voltage of 6 volts up to 18 volts.

Recommended batteries:

For best results use the Rotolight (RL-BATT-95) Lithium-ion v-Lock Battery (available from www.rotolight.com). Specifically optimised for use with the AEOS, it will power the light at full continuous power for up to 3 hours. At the time of writing, this is also the largest capacity battery that can be legally carried on an airline.

Available with a bundled D-TAP wall charger (110/220volt), 2 way battery charger or 4 way battery charger.

You can also use Anton Bauer Goldmount batteries on AEOS with a QR-200A adapter plate from Anton Bauer.

WARNING: *Take care to use recommended batteries in your AEOS. If the batteries you are using get hot then use the supplied mains adapter instead.*

Manufacturer's Limited Warranty

Rotolight Ltd will extend to its customers a Limited Manufacturer's Product Warranty of 1 Year on Manufacturer's Products from their date of purchase. This warranty shall not include General 'wear and tear', and shall be invalidated by tampering with, dropping or damaging the product or misuse. The Manufacturer's Products warranty will specifically not include the tearing or damage to filter Gels, (unless immediately reported upon delivery), water damage to the unit, battery acid damage to the unit, stress fractures to the unit, filter holder or battery mount(unless reported on delivery), or disconnection of wires (unless reported on delivery).



Rotolight RL-BATT-95
Battery (recommended)



Rotolight RL-AEOS-BD



Rotolight RL-AEOS-2LK



Rotolight RL-AEOS-RFP

Customer will be solely liable for any and all shipping costs, duties and import taxes of any components or units returned for service/repair. This warranty is subject to the manufacturer standard terms and conditions available on request. This product is made for professional use.

Extended 3 year warranty is available within the first month of purchase from www.rotolight.com

Limitation of Liability

The liability of the Manufacturer or Distributor, if any, for damages for any claim of any kind whatsoever with regard to any order placed for the Manufacturer's products, regardless of the delivery or non-delivery of the Products, or with respect to the Products covered thereby, shall not (except in respect of liability for death or personal injury caused by Manufacturers or Distributor's negligence or in the case of fraud) be greater than the actual purchase price of the Products with respect to which such claim is made. Under no circumstances shall the Manufacturer or Distributor be liable for injury or harm caused by product misuse or compensation, reimbursement, or damages on account of the loss of present or prospective profits, expenditures, investments, or commitments, whether made in the establishment, development, or maintenance of business reputation or goodwill or for any other reason whatsoever.

AEOS OPTIONAL ACCESSORIES

All accessories are available to purchase from www.rotolight.com

- 1) Rotolight V-Mount Battery Bundle (RL-Batt-Bundle)
- 2) Rotolight AEOS Soft Bag (RL-SOFTBAG)
- 3) AEOS Barn Doors (RL-AEOS-BD)
- 4) 10 Piece Add On Colour Filter Pack (RL-AEOS-CFP)
- 5) AEOS Yoke Kit for c-stand or studio mounting (RL-AEOS-YOKE)
- 6) Rotolight Portable Light Stand (RL-MEDIUM-LS)
- 7) AEOS 360 Ball Head Adapter (RL-AEOS-360)
- 8) AEOS Honeycomb Louvre (RL-AEOS-LOUVER)



WWW.ROTOLIGHT.COM



CineSFX (EPI7165609.3,15/481,460, 1606907.2), Flash Sync (EPI7166340.4, 15/485.239, 2017-078504, 1705754.8, 1606658.1) and True Aperture Dimming (EPI7165574.9, 15/481,463, 1606908.0) are patent pending technologies of Rotalight Ltd. Accucolour™, Aeos™, CineSFX™, Designer Fade™, True Aperture Dimming™, and Rotalight™ are registered trademarks of Rotalight Ltd.
All rights reserved © 2017 Rotalight Ltd