

You are here: *MOTION MOUNT Compatibility*

MOTION MOUNT COMPATIBILITY

The RED MOTION MOUNT[®] Ti PL and MOTION MOUNT Ti Canon[®] enable you to mount most PL cinema lenses and Canon EF compatible lenses to your camera.

WARNING: Using lenses, adaptors, or other accessories that are not compatible with the MOTION MOUNT may damage the internal glass or other elements in the lens mount.

WARNING: Lenses, adaptors, and other PL-mount devices with mounting elements that protrude more than 27.73 mm behind the PL mounting flange are not compatible with the MOTION MOUNT.

NOTE: Any damage to the MOTION MOUNT Ti PL or the camera system caused by using incompatible lenses (including non-standard PL lenses) or devices is not covered under warranty.

COMPATIBILITY REQUIREMENTS

Some lenses are NOT compatible with the MOTION MOUNT due to the liquid crystal glass and shape of the baffle inside the mount.

Refer to the following diagram to determine if the maximum protrusion depth and maximum protrusion diameter of a particular lens is compatible with the MOTION MOUNT. If any of the protruding lens elements extend beyond these dimensions, the lens IS NOT COMPATIBLE.

DO NOT use lenses that have mounting elements that exceed the following values:

- **Maximum Protrusion Depth:** 27.73 mm
- **Maximum Protrusion Diameter at a Protrusion Depth of 14.20 mm:** 54.00 mm
- **Maximum Protrusion Diameter at a Protrusion Depth of 27.73 mm:** 22.00 mm

WARNING: Use of a lens that extends beyond these dimensions may damage the MOTION MOUNT.

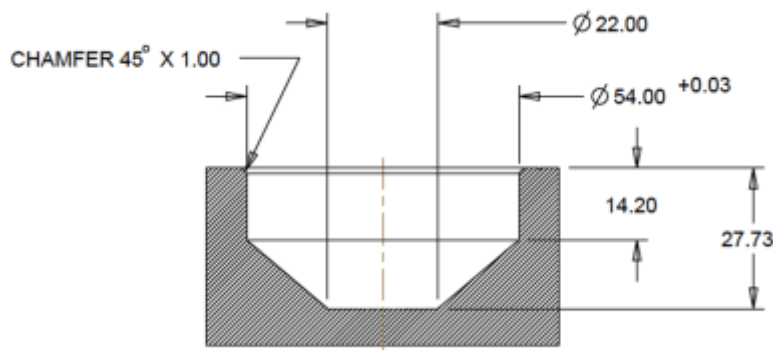


Figure: MOTION MOUNT Safe Zone

COMPATIBLE PL LENSES AND DEVICES

The MOTION MOUNT Ti PL is compatible with the lenses and devices listed in the table below:

COMPATIBLE PL LENS/DEVICE	FOCAL LENGTH
Angénieux Optimo	17–80mm T2.2
	24–290mm T2.8
	28–76mm T2.6
	28–340mm T3.2
	1.4x Extender
	2.0x Extender
ARRI [®] /Fujinon [®] Alura	18–80mm T2.6
	30–80mm T2.8
	45–250mm T2.8
ARRI/Zeiss [®] Master Prime	16mm T1.3
	18mm T1.3
	21mm T1.3
	25mm T1.3
	27mm T1.3
	32mm T1.3
	35mm T1.3
	40mm T1.3
	50mm T1.3
75mm T1.3	
ARRI/Zeiss Standard Speed	10mm T2.1
	50mm T2.1
ARRI/Zeiss Super Speed	18mm T1.3
	25mm T1.3
	35mm T1.3
	50mm T1.3
	85mm T1.3
ARRI/Zeiss Ultra Prime	14mm T1.9
	20mm T1.9
	40mm T1.9

COMPATIBLE PL LENS/DEVICE	FOCAL LENGTH
Century	1.4x Extender 2.0x Extender
Cooke® 5i	18mm T1.4 25mm T1.4 32mm T1.4 50mm T1.4 75mm T1.4
Cooke S4 Prime	14mm T2.0 18mm T2.0 21mm T2.0 25mm T2.0 27mm T2.0 32mm T2.0 35mm T2.0 40mm T2.0 50mm T2.0 65mm T2.0 75mm T2.0 100mm T2.0
Fujinon Cabrio	19–90mm T2.9
Fujinon Premiere	14.5–45mm T2.0 24–180mm T2.6 75–400mm T2.8–3.8
Hawk V-Lite Anamorphic	45mm T2.2 65mm T2.2
RED PRO PRIME	25mm T1.8 35mm T1.8 50mm T1.8 85mm T1.8 100mm T1.8 300mm T2.9

COMPATIBLE PL LENS/DEVICE	FOCAL LENGTH
RED PRO ZOOM	17–50mm T2.9 18–85mm T2.9
RED ZOOM	18–50mm T3.0 50–150mm T3.0

INCOMPATIBLE PL LENSES AND DEVICES

The MOTION MOUNT Ti PL is NOT COMPATIBLE with the lenses and devices listed in the table below:

INCOMPATIBLE PL LENS/DEVICE	FOCAL LENGTH	DESCRIPTION
Angénieux Optimo DP Series	16–42mm T2.8 30–80mm T2.8	DP Series lenses have a flange depth that does not meet standard specification for PL lenses.
ARRI/Zeiss Standard Speed	12mm T2.1 16mm T2.1 20mm T2.1 24mm T2.1 32mm T2.1 40mm T2.1	The rear flange depth of these lenses are too wide or too long and interfere with the MOTION MOUNT.
Cooke S2/S3 Speed Panchro	32mm T2.3	The rear flange depth is too long and interferes with the MOTION MOUNT glass.
PL-to-B4 Adaptor	N/A	The rear face of the PL-to-B4 Adaptor interferes with the MOTION MOUNT glass.
RED FOCUS	N/A	The rear face of the RED FOCUS interferes with the MOTION MOUNT glass.
RED PRO PRIME	18mm T1.8	The extended PL cover ring interferes with the ridges on the baffle inside the MOTION MOUNT Ti PL, preventing installation.

COMPATIBLE CANON EF LENSES

The MOTION MOUNT Ti Canon supports all lenses that are compatible with the DSMC[®] Canon Mount.

For more information and a full list of compatible lenses, see the camera [operation guides](#).

NON-LINEAR EDITING (NLE) APPLICATIONS

The .R3D files captured using the MOTION MOUNT are compatible with the following applications:

- REDCINE-X PRO Build 20.0.0 or later
- Adobe Premiere® Pro CC or later
- Avid® Media Composer
- DaVinci® Resolve
- Edius® Pro
- Final Cut Pro® 7 or Final Cut Pro® X

NOTE: Final Cut Pro requires **Apple® Workflow Installer**.

- Vegas™ Pro

Copyright © 2017 RED.COM, LLC. All Rights Reserved.