

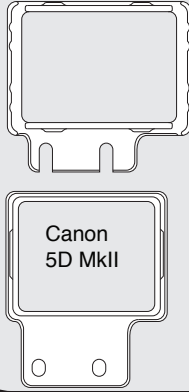


Optional Z-Finder Hard Mount Frames

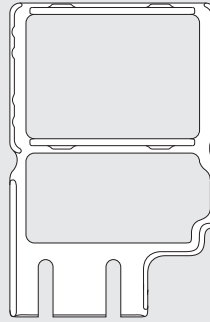
Like the universal Zacuto hard mount frame, the optional Zacuto hard mount frames give you the most secure attachment for your Z-Finder to your DSLR. Being highly adjustable, there is a hard mount frame for just about every size DSLR out there. The Z-Finders are quick releasable with just a snap off. The frames are low profile and unobtrusive.

Types of Zacuto Metal Frames

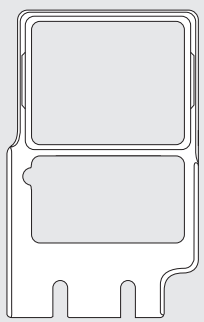
Panasonic GH3



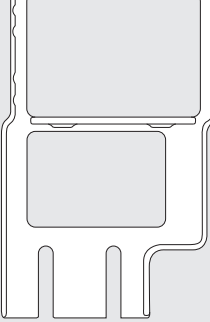
3.2" Small Body DSLR w/Battery Grip



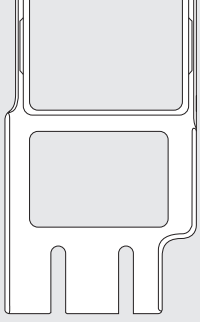
3 Small Body DSLR w/Battery Grip



3.2" Tall Body DSLR

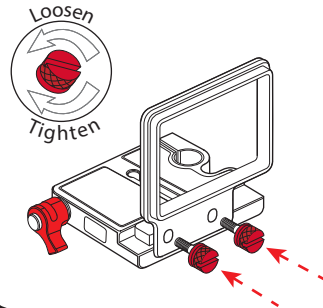


3" Tall Body DSLR

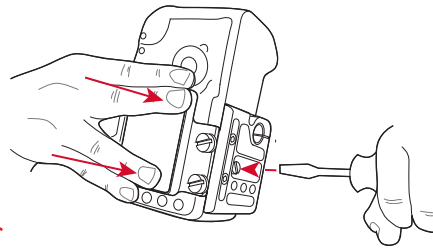


Canon 5D MKII

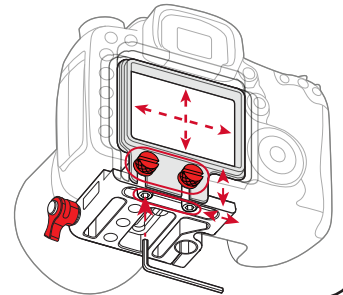
- 1 Attach frame to Gorilla Plate



- 2 Press and hold frame against LCD and attach to camera with 1/4"-20 screw

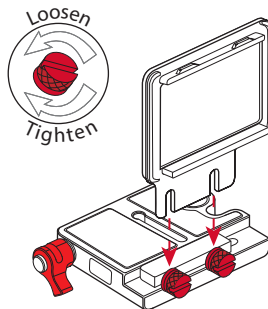


- 3 Center frame on camera LCD

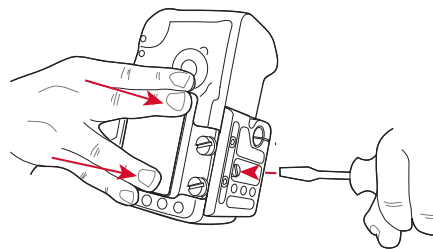


Panasonic GH3

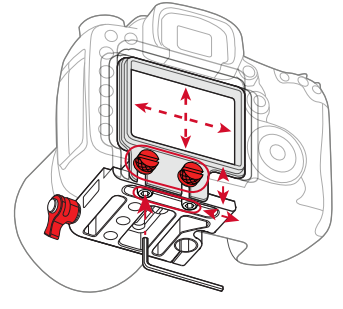
- 1 Attach frame to Gorilla Plate



- 2 Press and hold frame against LCD and attach to camera with 1/4"-20 screw

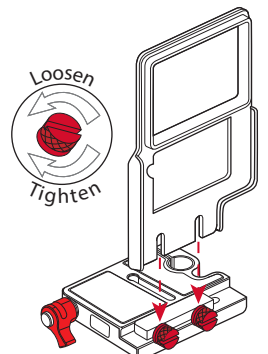


- 3 Center frame on camera LCD

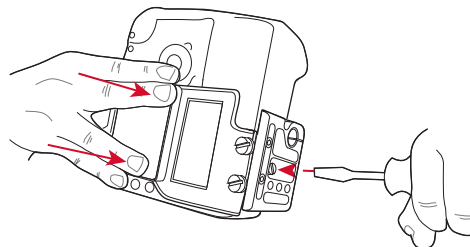


Small Body DSLR w/ Battery Grip & Tall Body DSLR

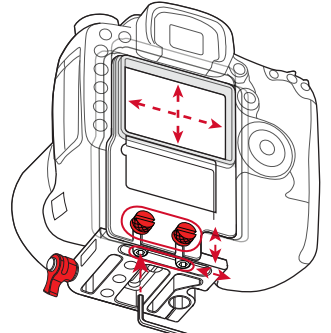
- 1 Attach frame to Gorilla Plate



- 2 Press and hold frame against LCD and attach to camera with 1/4"-20 screw



- 3 Center frame on camera LCD



**NEED
MORE
HELP**

Check out our tutorial videos at zacuto.com

**ZACUTO
USA**