

## En Addendum to the User's Manual

The **Wi-Fi** item in the setup menu for the camera you have purchased features a new **Establish Wi-Fi connection** option, which can be used to establish a direct Wi-Fi connection between the camera and a smartphone or tablet (below, "smart device") running the SnapBridge app.

### The SnapBridge App

Use SnapBridge to download pictures or control the camera remotely from your smart device. Before proceeding, note that:

- You should be sure to use only the latest version of the app.
- The SnapBridge app can be downloaded on the Apple App Store® or from Google Play™.
- The latest information on SnapBridge is available on the Nikon website.
- Information on using the app is available via online help, which can be viewed at: <https://nikonimglib.com/snbr/onlinehelp/en/index.html>



### Connecting to the Camera Directly via Wi-Fi

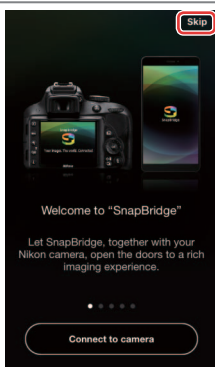
#### Before Connecting

Before proceeding:

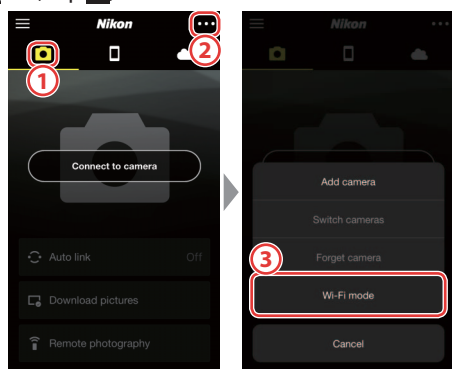
- Enable Wi-Fi on the smart device (for details, see the documentation provided with the device).
- Ensure that the batteries in the camera and smart device are fully charged to prevent the devices turning off unexpectedly.
- Check that there is space available on the camera memory card.

#### 1 Smart device: Launch the SnapBridge app and tap **Skip**.

- If you have launched the app before, the welcome dialog will not be displayed; proceed to Step 2.
- Tapping **Connect to Camera** displays a Bluetooth pairing dialog. Tap the **X** button at the top left corner to return to the welcome dialog. For information on Bluetooth connections, see online help.



#### 2 Smart device: Open the **☰** tab, tap **⋮**, and select **Wi-Fi mode**.



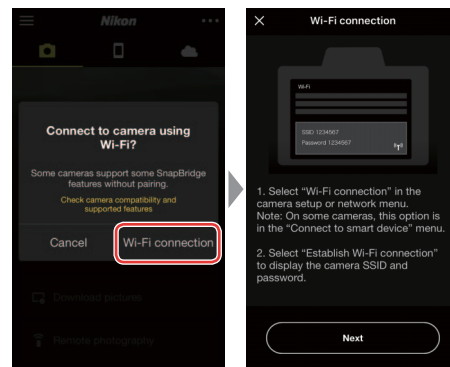
#### No "Wi-Fi mode" Option?

Check that the SnapBridge app is up to date. If you are using the latest version and the Wi-Fi mode option is still missing, exit the app and confirm that it is not running in the background, then check that the device is connected to the Internet and re-launch the app.

#### 3 Smart device: Tap **Wi-Fi connection** when prompted.

The smart device will prompt you to ready the camera. Turn the camera on and proceed to the next step.

\* Do **not** tap **Next** until you have completed Step 4.



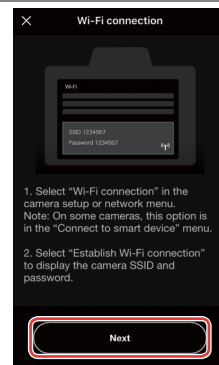
#### 4 Camera: In the camera setup menu, select **Wi-Fi**, then highlight **Establish Wi-Fi connection** and press **OK**.

The camera SSID and password will be displayed.



#### 5 Smart device: Return to the smart device and tap **Next**.

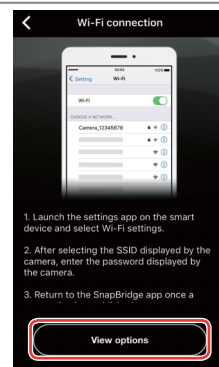
Wi-Fi connection instructions will be displayed.



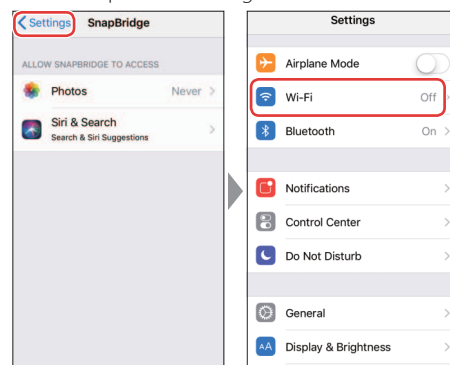
#### 6 Smart device: After reading the instructions, tap **View options**.

The dialog displayed varies with the smart device and operating system:

- On *Android devices*, tapping **View options** displays the smart device Wi-Fi - settings dialog.

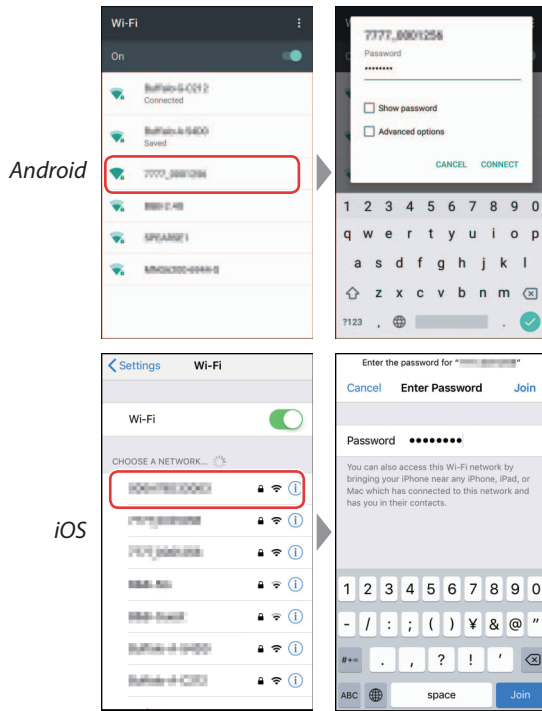


- On *iOS devices*, tapping **View options** launches the iOS settings app. Tap **< Settings** to view the settings app and then scroll up and tap **Wi-Fi**, which you'll find near the top of the settings list.



**7 Smart device:** Select the SSID displayed by the camera in Step 4 and enter the password.

Depending on the smart device and operating system, the displays may differ from those shown below.



**Trademark Information**

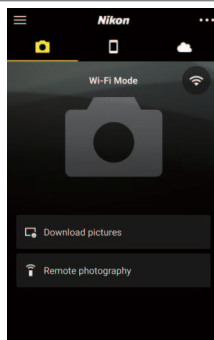
Apple®, App Store®, the Apple logos, iPhone®, iPad®, iPod touch®, Mac, macOS, and OS X are trademarks of Apple Inc. registered in the US and other countries. The iPhone trademark is used under license from Aiphone Co., Ltd. Android, Google Play, and the Google Play logo are trademarks of Google LLC. The Android robot is reproduced or modified from work created and shared by Google and used according to terms described in the Creative Commons 3.0 Attribution License. IOS is a trademark or registered trademark of Cisco Systems, Inc., in the United States and/or other countries and is used under license.

**Reconnecting**

Unless the password has changed in the interim, you will not be required to enter the password when next you connect to the camera.

**8 Smart device:** Return to the SnapBridge app.

Once a Wi-Fi connection is established, the app will display Wi-Fi mode options. See online help for information on using the SnapBridge app.



**Ending Wi-Fi Connections**

To end the Wi-Fi connection, tap . When the icon changes to , tap and select **Exit Wi-Fi mode**.

