



- |                                 |                              |                     |
|---------------------------------|------------------------------|---------------------|
| A: Wi-Fi antennas               | G: Reset button              | M: Broadcast status |
| B: USB port                     | H: 10/100/1000 Ethernet      | N: SD/MMC card slot |
| C: Mic/Line stereo input/output | I: HDMI input/output         | O: Fault/Error      |
| D: Headphone/IFB input/output   | J: SD/HD/3G-SDI input/output | P: OLED display     |
| E: Power input                  | K: Video input status        | Q: Stream joystick  |
| F: Power switch                 | L: Codec status              | R: Menu joystick    |

#### Stream Joystick:

● (button press): Access quick menu actions, exit menu screens

#### Menu Joystick:

▲, ▼, ◀, ▶: Select menu items, change status screen on main display, select characters  
● (button press): Confirm selection, open selected menu

#### Reset Button:

Hold for 3-6 seconds: Reset all network settings  
Hold for 10+ seconds: Perform complete factory reset

## PHYSICAL CONNECTIONS

1

- 1 Connect power to Cube using the included A/C adapter or one of the available accessory power cables (see [Teradek.com](http://Teradek.com)).
- 2 Connect the SDI or HDMI output from your video source to one of Cube's video input connectors (I or J).

## CONNECT TO CUBE

2

Cube has a built in web interface for configuring stream destinations, encoder parameters, and other settings. The interface can be accessed by connecting via Wi-Fi or wired Ethernet.

### CONNECT VIA WIFI


- 1 Connect to Cube's Wi-Fi network: Teranet-XXXXX (serial number of the device).
- 2 Open a web browser and navigate to <http://172.16.1.1>.
- 3 Cube's Wi-Fi can be configured to join your network via the web UI or front panel.

### CONNECT VIA ETHERNET

- 1 Plug an Ethernet cable into Cube's 10/100/1000 Ethernet port and connect it to an Ethernet switch or router.
- 2 Connect your computer to the same network. Cube's IP address is displayed on the front panel's Ethernet Status menu. Access it by pressing down on the Menu joystick to cycle through status screens.
- 3 Open a web browser and navigate to Cube's IP address.

## STREAM TO THE INTERNET

3

- 1 Open Cube's web UI, then select the Video Stream Output menu if it is not already displayed.
- 2 Select Internet Streaming as the Stream Mode and choose a platform - Facebook, Ustream, Livestream, YouTube, Twitch - or select manual RTMP.
- 3 Enter your credentials and choose a channel/event, or enter the RTMP destination info and press apply.
- 4 Select your desired Audio/Video bitrate and resolution under the Encoder menu.
- 5 Go Live by clicking the Broadcast button , or use the front panel Stream Joystick

## HEVC AND H.264

4

Cube 700 series devices support 1080p, 60fps encoding using both HEVC and H.264 codecs. HEVC provides the most efficient encoding for both low bitrate and high quality applications, while H.264 supports a wider variety of streaming platforms and is one of the most common video codecs worldwide.

On the encoder, the codec can be switched between HEVC and H.264 from the Encoder Settings and Video Stream Output settings pages on the web UI, or from the Video Setup menu on the front panel.

#### NEED MORE HELP?

1 Support: <http://support.teradek.com> → Contains tips, information and all the latest firmware & software updates.  
TERADEK SUPPORT STAFF: [support@teradek.com](mailto:support@teradek.com) or call 888-941-2111 ext2 (Mon-Fri 9am to 6pm PST)

# 5

## RECORDING

Cube encoders support broadcast recording to an SD Card or external USB drive. To enable recording:

- 1 Insert a compatible SD card into the SD card slot (E), or a USB drive into the USB port (A).
- 2 When prompted, select **Yes** to enable recording.
- 3 Select the record trigger you would like to use. Recordings can be triggered by SDI/HDMI record flags from compatible cameras, broadcast start/stop, or manually. Once enabled, recordings are saved to the selected storage media when triggered. For best results, use Class 6 or higher SD cards.

You can also enable or disable recording from the web UI.

### RECORDING CONSIDERATIONS

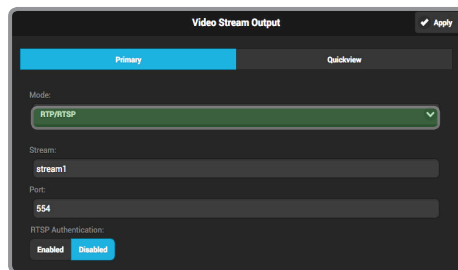
- Recordings can be manually triggered via the front panel, or by the broadcast state in Internet Streaming mode. Each time a broadcast starts, a new recording is created.
- If a broadcast is interrupted for connectivity reasons, recording continues.
- If a recorded file exceeds your storage media's file size limits, a new file will be created and recording continues.
- Recording resolution and quality matches your configured Broadcast settings.

# 6

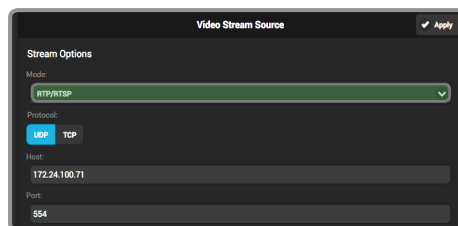
## DECODER SETUP

Ensure that the Cube encoder and decoder are on the same network. To configure:

- 1 Connect to the Cube encoder (see previous sections) and open the web UI.
- 2 Open the **Video Stream Output** menu, then select RTP/RTSP as the streaming mode.
- 3 Click **Apply**.
- 4 Connect to the Cube decoder (see previous sections) and open the web UI.
- 5 Open the **Video Stream Source** menu, then select RTP/RTSP as the streaming mode.
- 6 Enter the host (Encoder) IP address, port and stream name (stream 1), then select **Apply**.



Encoder web UI



Decoder web UI

# 7

## BONDING

Cube can increase your broadcast's bandwidth and reliability by bonding multiple Internet connections. An active Core subscription is required to take advantage of this feature. Visit <http://core.teradek.com> to learn more and to create an account.

Ethernet, Wi-Fi, USB cellular modems, or cellular-capable iOS devices running the TeraLink app can be used simultaneously. Refer to Supported Connections for more details.

### BONDING WITH TERALINK AND CORE



- 1 Connect to Cube (see previous sections) and open the web UI.
- 2 Open the Cloud Services menu and select Core.
- 3 Install the TeraLink app on a cellular-capable iOS device and connect to the Cube's Wi-Fi network, then open the TeraLink app and link your iOS device.
- 4 Other available network connections on the Cube (USB modem or Ethernet) do not require configuration through the TeraLink app, they are configured through the Cube's web UI.

### SUPPORTED CONNECTIONS

- Ethernet
- 3G/4G USB modem
- Wi-Fi (AP mode) - Up to 4 cellular-capable iOS devices using the TeraLink App
- Wi-Fi (Client mode) - Connect to an existing wireless network or mobile hotspot

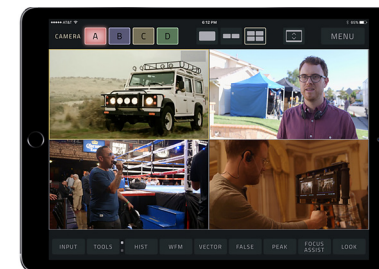
### BONDING WITH BOND MODULE

For increased broadcast reliability, Cube can be converted into a cellular bonding device with a Bond Module. Bond allows Cube to stream over up to four additional (five total) 3G/4G/LTE connections. For more information on Bond, visit [teradek.com](http://teradek.com).

# 8

## MONITOR WITH AN iOS DEVICE

- 1 Download VUER from the iTunes App Store.
- 2 Connect your iOS device to the same network as Cube, then launch VUER.
- 3 From the VUER app, tap **CAMERA** on the upper, left-hand corner, choose your device(s), then tap Done. VUER can monitor up to four devices simultaneously (iPad Air and newer).



### NEED MORE HELP?

1 Support: <http://support.teradek.com> → Contains tips, information and all the latest firmware & software updates.  
TERADEK SUPPORT STAFF: [support@teradek.com](mailto:support@teradek.com) or call 888-941-2111 ext2 (Mon-Fri 9am to 6pm PST)