

# Shoe Mount Adaptor

取扱説明書

Operating Instructions

Mode d'emploi

Bedienungsanleitung

Istruzioni per l'uso

Manual de instrucciones

使用说明书

사용 설명서

お買い上げいただきありがとうございます。



警告

電気製品は、安全のための注意事項を守らないと、火災や人身事故になることがあります。

- この取扱説明書には、事故を防ぐための重要な注意事項と製品の取り扱いかたを示してあります。**この取扱説明書をよくお読みのうえ**、製品を安全にお使いください。お読みになったあとは、いつでも見られるところに必ず保管してください。
- ご使用にあたっては、UWP-D シリーズの取扱説明書をあわせてお読みください。

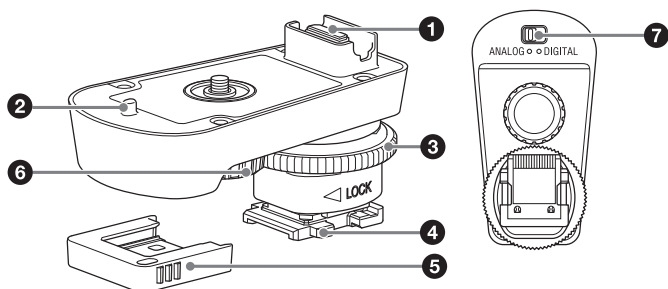
SMAD-P5

© 2019 Sony Corporation Printed in Korea

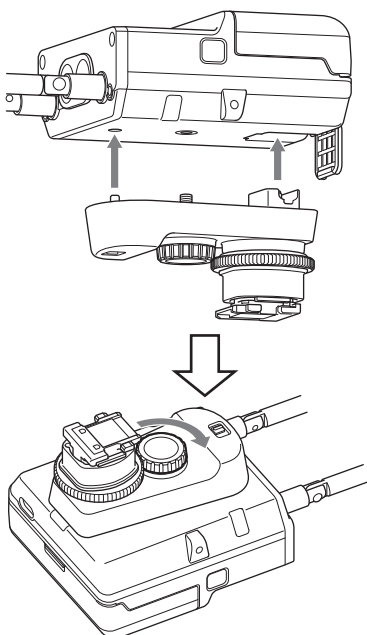


5010055010

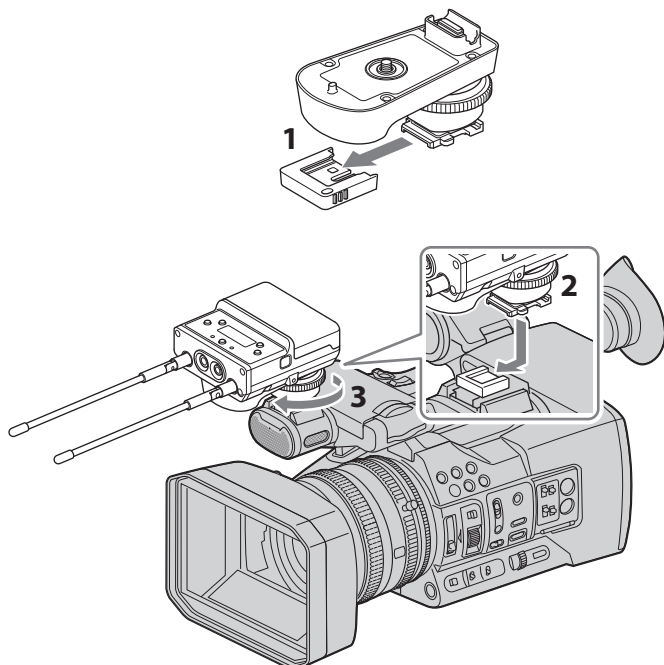
A



B



C



## English

Before operating the unit, please read this manual thoroughly and retain it for future reference.

### WARNING

**To reduce the risk of fire or electric shock, do not expose this apparatus to rain or moisture.**

**To avoid electrical shock, do not open the cabinet. Refer servicing to qualified personnel only.**

### For the customers in the U.S.A.

This equipment has been tested and found to comply with the limits for a Class B digital device, pursuant to part 15 of the FCC Rules. These limits are designed to provide reasonable protection against harmful interference in a residential installation. This equipment generates, uses and can radiate radio frequency energy and, if not installed and used in accordance with the instructions, may cause harmful interference to radio communications. However, there is no guarantee that interference will not occur in a particular installation. If this equipment does cause harmful interference to radio or television reception, which can be determined by turning the equipment off and on, the user is encouraged to try to correct the interference by one or more of the following measures:

- Reorient or relocate the receiving antenna.
- Increase the separation between the equipment and receiver.
- Connect the equipment into an outlet on a circuit different from that to which the receiver is connected.
- Consult the dealer or an experienced radio/TV technician for help.

You are cautioned that any changes or modifications not expressly approved in this manual could void your authority to operate this equipment.

If you have any questions about this product, you may call:

Sony Customer Information Service Center 1-800-222-7669 or <http://www.sony.com/>

### Supplier's Declaration of Conformity

Trade Name	: SONY
Model	: SMAD-P5
Responsible party	: Sony Electronics Inc.
Address	: 16535 Via Esprillo, San Diego, CA 92127 U.S.A.
Telephone Number	: 858-942-2230

This device complies with part 15 of the FCC Rules. Operation is subject to the following two conditions: (1) This device may not cause harmful interference, and (2) this device must accept any interference received, including interference that may cause undesired operation.

### For the customers in Canada

CAN ICES-3 (B)/NMB-3(B)

### ATTENTION

The electromagnetic fields at the specific frequencies may influence the sound of this unit.

**Türkiye'deki müşteriler için**

**AEEE Yönetmeliğine Uygundur**

### For the customers in the U.S.A.

SONY LIMITED WARRANTY- Please visit <http://www.sony.com/psa/warranty> for important information and complete terms and conditions of Sony's limited warranty applicable to this product.

### For the customers in Canada

SONY LIMITED WARRANTY - Please visit <http://www.sonybiz.ca/pro/lang/en/ca/article/resources-warranty> for important information and complete terms and conditions of Sony's limited warranty applicable to this product.

### For the customers in Europe

Sony Professional Solutions Europe - Standard Warranty and Exceptions on Standard Warranty. Please visit <http://www.pro.sony.eu/warranty> for important information and complete terms and conditions.

### For the customers in Korea

SONY LIMITED WARRANTY - Please visit <http://bpeng.sony.co.kr/handler/BPAS-Start> for important information and complete terms and conditions of Sony's limited warranty applicable to this product.

## Usage Precautions

### Notes

- Always verify that the unit is operating properly before use. SONY WILL NOT BE LIABLE FOR DAMAGES OF ANY KIND INCLUDING, BUT NOT LIMITED TO, COMPENSATION OR REIMBURSEMENT ON ACCOUNT OF THE LOSS OF PRESENT OR PROSPECTIVE PROFITS DUE TO FAILURE OF THIS UNIT, EITHER DURING THE WARRANTY PERIOD OR AFTER EXPIRATION OF THE WARRANTY, OR FOR ANY OTHER REASON WHATSOEVER.
- SONY WILL NOT BE LIABLE FOR CLAIMS OF ANY KIND MADE BY USERS OF THIS UNIT OR MADE BY THIRD PARTIES.
- SONY WILL NOT BE LIABLE FOR THE TERMINATION OR DISCONTINUATION OF ANY SERVICES RELATED TO THIS UNIT THAT MAY RESULT DUE TO CIRCUMSTANCES OF ANY KIND.

If the unit is suddenly taken from a cold to a warm location, or if ambient temperature suddenly rises, moisture may form on the outer surface of the unit and/or inside of the unit. This is known as condensation. If condensation occurs, turn off the unit and wait until the condensation clears before operating the unit. Operating the unit while condensation is present may damage the unit.

- Noise may occur in some rare cases due to signal interference from mobile terminals.  
To prevent noise, operate the unit at least 30 cm away from any mobile terminals.
- When using this unit, do not connect the receiver's output cables to the camera. Doing so may result in noise.

## Overview

This unit is a dedicated shoe-mount adaptor used for connecting the UWP-D series wireless microphone package's receiver (URX-P40 portable diversity tuner) to a camera.

The adaptor supports video camera recorders and interchangeable-lens digital cameras from Sony and other Sony cameras equipped with a multi-interface shoe, improving the convenience of using a wireless microphone for shooting video.

- Wirelessly transfer audio signals from the receiver to the camera.
- Connects directly to a camera equipped with a multi-interface shoe that supports digital audio input for recording of a digital audio signal output from a receiver, enabling the recording of low-noise audio.

- Supports the display of the status of the wireless microphone on the LCD screen or viewfinder for some models.
- Provides power from the camera to the receiver via settings on the receiver.
- Power supply automatically switches to power from the camera when batteries are not inserted in the receiver. In such cases, on/off switching of the receiver's power is linked to that of the camera.

**Note**

When used in conjunction with some camera models, operation of the power supply function and the power ON/OFF control function is not guaranteed. Insert new AA alkaline batteries in the receiver, and set the receiver's power select (PWR SOURCE) menu item to BATT ONLY mode. When the remaining battery indicator reaches one segment or less, insert new batteries immediately to avoid unexpected shutdown of the camera or data loss.

*For details on cameras that support this unit, visit the Sony website.*

**Parts Identification (Fig. A)**

- Receiver connection terminal
- Guide
- Tightening dial
- Multi-interface foot
- Terminal cap
- Receiver tightening dial
- Analog/Digital switch

**Attaching/Removing the Receiver (Fig. B)**

Align the guide of the unit with the hole on the receiver, and insert into the receiver so that the connector of the unit and the connector on the rear of the receiver are firmly connected. Then, turn the receiver tightening dial while holding the receiver firmly to secure the receiver.  
Be sure to remove the unit from the camera before removing the receiver.

**Mounting to the Camera (Fig. C)**

- Remove the terminal cap.
- Turn off the camera, align the unit's multi-interface foot with the camera's multi-interface shoe, and slide the unit in toward the lens until it is secure.

**Note**

Mounting may be difficult when performed with the tightening dial turned toward the LOCK arrow. Turn the tightening dial in the opposite direction of the LOCK arrow before mounting.

- Turn the tightening dial in the direction of the LOCK arrow to secure the unit.

When removing the unit, turn the camera off before performing the above procedure in reverse order.

**Note**

If the unit is attached to the handle of the camera handle, make sure that no load is placed on the unit and receiver.

**Linking the Receiver Power to the Camera**

You can link the on/off switching of the camera's power to that of the receiver. Perform the following while the unit and the receiver are connected to the camera.

- Remove the LR6 (size AA) batteries from the receiver.
- Turn on the camera.
- Turn on the receiver.

**Notes**

- If you turn off the power via the receiver, its link with the camera will be severed. To reestablish the link, operate the receiver to turn it on.
- If BATT ONLY is set in the power source selection menu of the receiver, it cannot be linked with the camera.

**Switching the Output Signal**

You can change the type of audio signal that is output from the unit using the Analog/Digital switch. It is set to Analog when shipped from the factory.

**Analog:** The adaptor supports existing video camera recorders and interchangeable-lens digital cameras from Sony and other Sony cameras equipped with a multi-interface shoe.




**Digital:** The adaptor supports cameras equipped with a multi-interface shoe that supports digital audio input. For some models, the RF level meter of the receiver, muting status of the transmitter (M mark), and remaining battery capacity warning (RF level meter flashes) are displayed on the LCD screen or viewfinder (see the following table).

*For details on cameras that support this function, visit the Sony website.*

**Note**

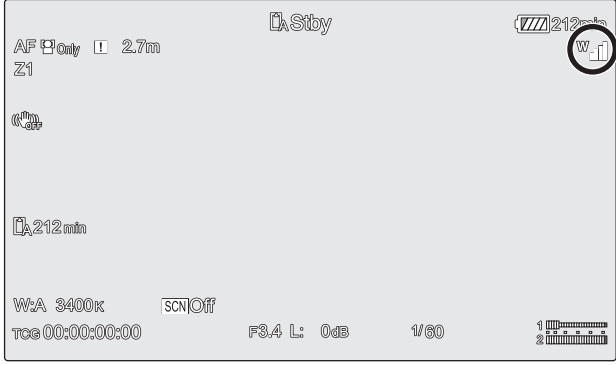
When attached to cameras that do not support digital audio input, set the Analog/Digital switch to the Analog position for use. If the Analog/Digital switch is set to the Digital position, the audio signal will not be output to the camera.

**Icons displayed when the output signal type is set to Digital**

	Indicates the current reception level status.
	Indicates the transmitter is in muting state.
	Indicates the remaining battery capacity of the transmitter is low when flashing.

**LCD Screen/Viewfinder Icon Display Position Example**

When the output signal is set to Digital, the icon is displayed enclosed by a ○ border.



**Note**

The display position and display form of the icon on the LCD screen or viewfinder will vary depending on the camera. For details, refer to the operating instructions of the attached camera.

**Specifications**

Output impedance	1 kΩ or less
Audio delay	Approx. 1.16 ms (Digital)
Operating temperature	0 °C to 50 °C (32 °F to 122 °F)
Storage temperature	–20 °C to +55 °C (–4 °F to +131 °F)
Dimensions	Approx. 34 mm × 35 mm × 65 mm (1 3⁄8 in. × 1 7⁄16 in. × 2 5⁄8 in.) (w/h/d)
Mass	Approx. 27 g (1.0 oz.) (excluding terminal cap)
Supplied accessories	Operating Instructions (1) (this document) Warranty booklet (1)

Design and specifications are subject to change without notice.