



Warning & Caution

WARNING:
This product must be used in a correctly grounded electrical environment; ground defects can create severe problems to the equipment, the picture quality and even cause danger for the user.

Copyright law and international treaties protect this product, its design and its software. One or several international patents apply to the StarliteHD. Unauthorized reproduction or distribution of this product or its design or its software or any portion of them, may result in severe civil and criminal penalties, and will be prosecuted to the maximum extent possible under the law.

Transvideo uses a specific cable for the StarliteHD. User must be extremely careful with the wiring of custom cables. Using custom or 3rd party cables may damage the product, and void your warranty.

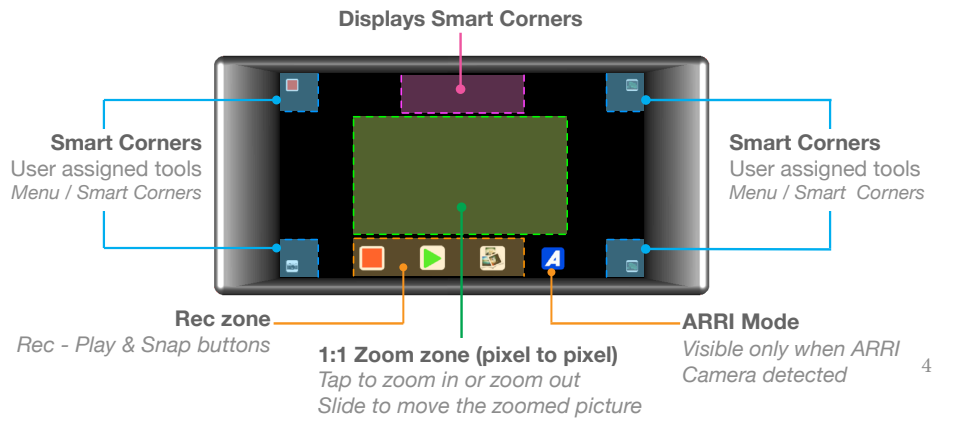
CAUTION:
Warranty is void as the product is opened. The unit contains electrostatic sensitive devices, which can be damaged or destroyed if you touch them. High voltage is present in the product and there is some risk of electric shock if opened by a non-accredited technician. Standard ESD procedures must be strictly followed during disassembly/re-assembly of the unit.

The user and/or technician assumes full responsibility or any risk of property damage, bodily injury, or even death arising out of the use or disassembly or repair of this equipment. In no event shall Transvideo S.A. or its local representatives be liable to a user, technician or third party for any injury, loss of any income or any damage of any kind resulting from the use of or work on the said equipment.

3

Home View - Smart Corners

StarliteHD

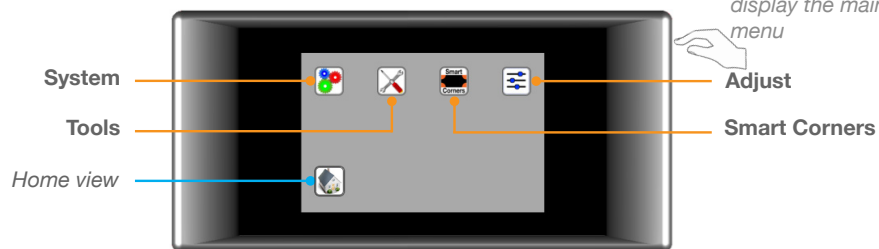


4

Main menu

StarliteHD

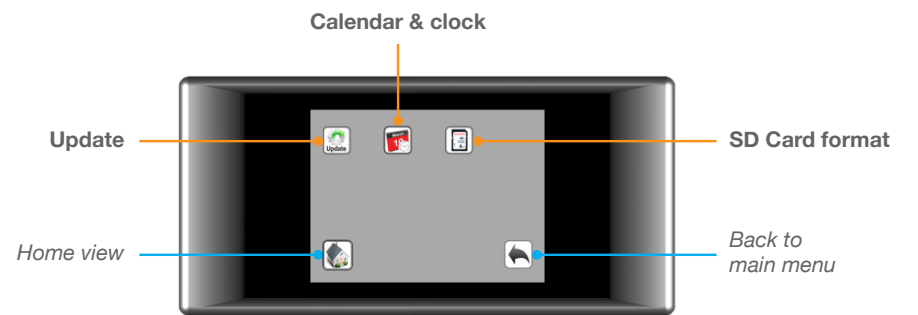
Press down the ON/OFF switch to display the main menu



5

System Menu

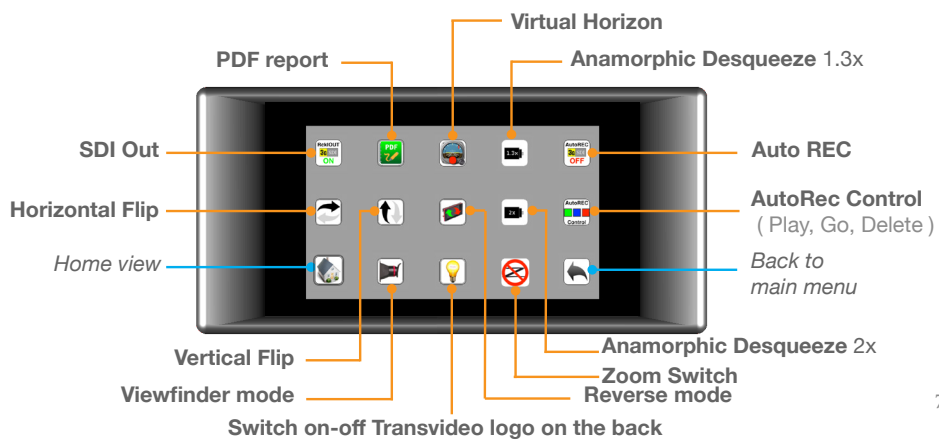
StarliteHD



6

Tools menu

StarliteHD

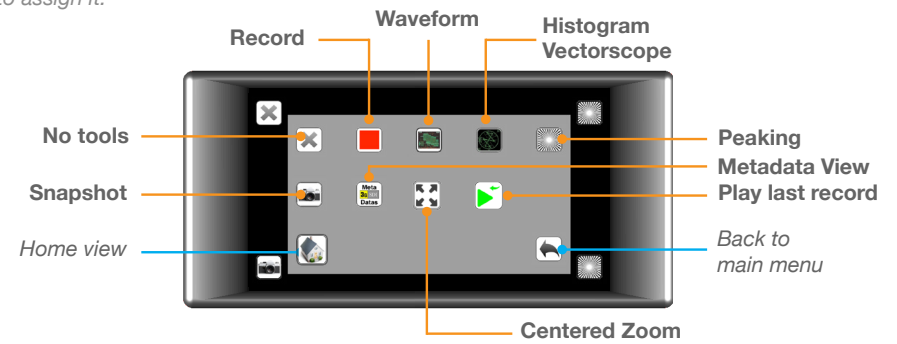


7

Smart Corners Menu

StarliteHD

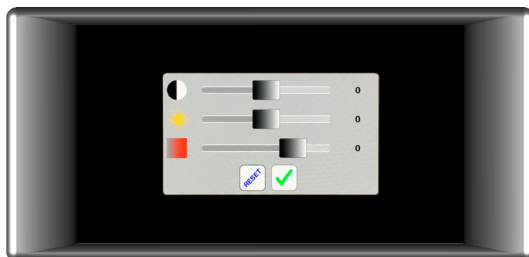
To assign a tool to a smart corner: select a tool, then choose the corner to which you want to assign it.



8

Adjust Menu

StarliteHD



Slide to adjust Luminosity, Brightness or Contrast then validate by pushing Push Reset to restore default values.

9

Virtual Horizon

StarliteHD



From the main menu, select Tools icon, then activate Virtual Horizon. When the horizontal bar is displayed on the top of the monitor screen, tap on CAL button. This will calibrate the digital bubble. The green bubble indicates that your monitor is on level.

10

Metadata

StarliteHD

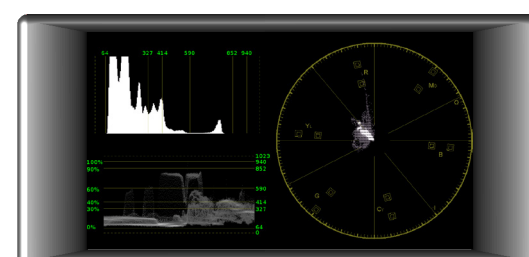


Displays available metadata embedded in the SDI signal. Metadata is camera dependent.

11

Histogram / Waveform / Vectorscope

StarliteHD

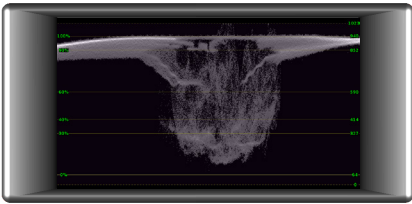


Displays available measurement tools. Histogram & Waveform can be pinned on the picture by simply touching their representation on this screen.

12

► **Waveform**

StarliteHD



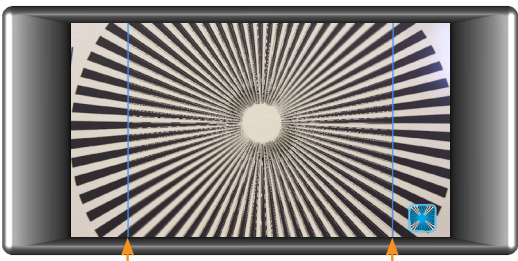
Tap the waveform to change size.



Waveform can be displayed either fullscreen or overlaying the live image.

► **Peaking**

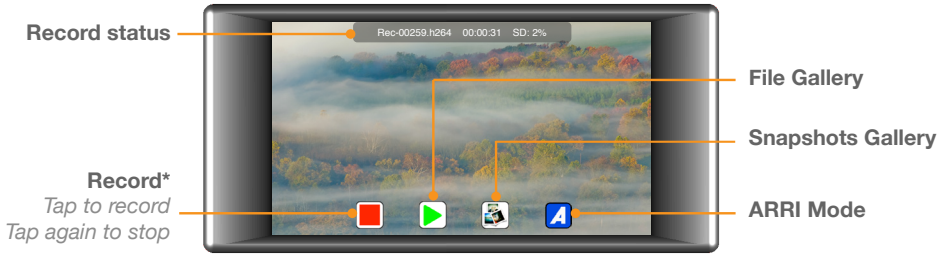
StarliteHD



Peaking is applied to the image area located between the two vertical bars.

► **Recording / Playing**

StarliteHD

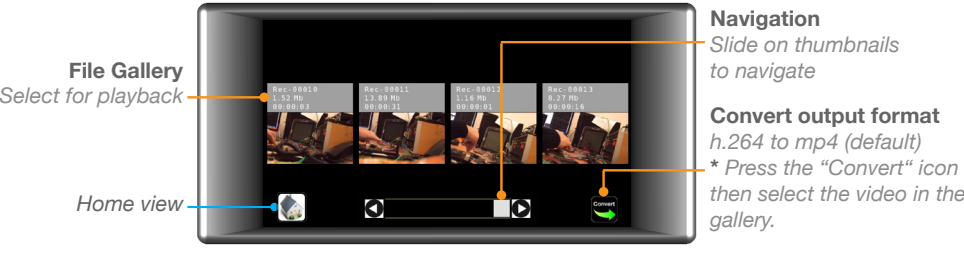


Record*
Tap to record
Tap again to stop

* All supported standards.

► **Record / Playback / Converting**

StarliteHD



* Please note that previously converted files with the same name will be overwritten.

► **Recording / Playing**

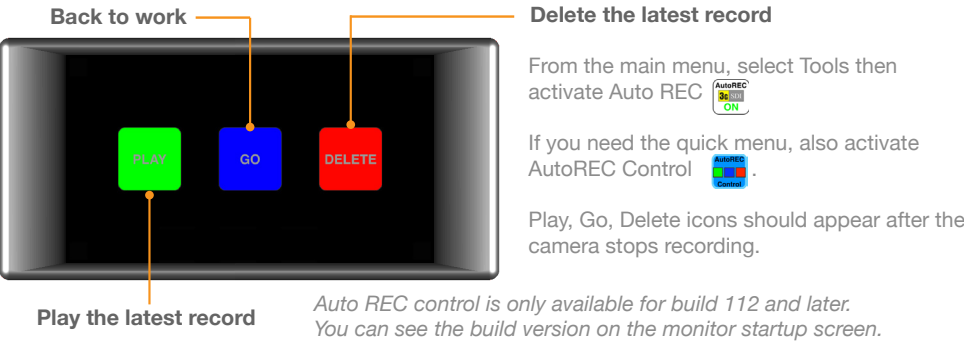
StarliteHD



Play
Slide to rewind & forward

► **Auto REC**

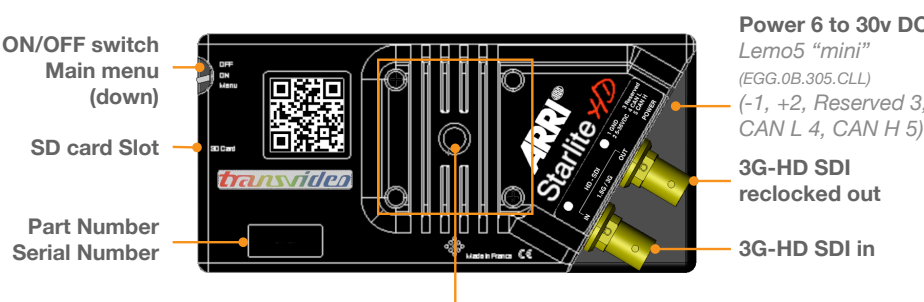
StarliteHD



Auto REC control is only available for build 112 and later. You can see the build version on the monitor startup screen.

► **Mechanics & connectors**

StarliteHD



Transvideo mounting system with 1/4-20 thread
To attach the monitor to 3D Swing Arm - To mount a Battery Adapter

► **Technical specifications**

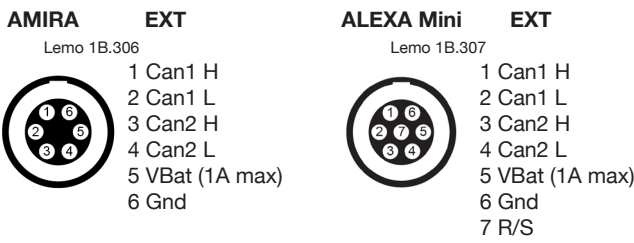
StarliteHD

Video input	1 x 3G / HD / SDI	Color temperature	D56
Video output	1 x 3G / HD / SDI	AvengerLeveler™	yes
	3G: 1080 / 50p, 60p		Lemo EGG.0B.305.CLL
	HD: 1080 / 50i, 60i		1 Gnd
	1080 / 24p, 25p, 30p		2 +V DC
	1080 / 24psf, 25psf		3 Reseved
	720 / 25p, 30p, 50p, 60p		4 Can L
Supported Standards	SDI: 525 / 60i		5 Can H
	625 / 50i		
Display type & size	AMOLED - 5 inches	Power Cons.	6W
Pixels	Picture zone 1280 x 720	SD card slot	yes
Contrast ratio	3400:1	Dimensions (w x h x d)	144 x 68 x 27 mm 5,66 x 2,67 x 1,06 inches
Viewing angle	±80° H & V	Weight	< 200g / 0.5 lbs
Brightness max	380 Nits		

► **ARRI camera connectors Pin-Outs**

StarliteHD

<http://www.transvideo.eu/StarliteHD5-ARRI>



Note: All pin-outs for camera interfaces appear as seen by the user.

► **Configuration**

StarliteHD

You can change your StarliteHD configuration which gives ability to:

- Convert the output format from h.264 to mp4 (default) or mkv files.
- Adjust the compression level and to choose intra mode for coding.
- Choose a default file name for your clips.
- And More.

User presets options are available via our website.
The generated settings are installed onto the SD card.

For more information, visit <http://www.transvideo.eu/support-StarliteHD>

► **How to Update**

StarliteHD

Place the SD card into your computer. Visit: <http://www.transvideo.eu/starlitehd-update>
Download and unzip the latest software release (the downloaded file is in zip format) using your archive utility application.
Open the unzipped folder then copy the file maj.tar.gz and paste it at the root of the SD card.
Do not rename the update file on the SD card
Insert the SD card into the monitor. Turn the monitor ON, then push down the menu button.
Select the Settings icon then select Update. Validate your choice and wait...
During the update, you can read the following information on the screen.
- Full system update : may require more than 30 minutes.
- Applicative update in progress.
Do not disconnect your monitor from the power supply. We recommend the StarliteHD is connected to Mains Power for Updates
After a successful update, the monitor displays "Your monitor is up to date".
If an error occurs, a report is generated.
You can read our online version at <http://www.transvideo.eu/support-StarliteHD>

► **Accessories / Cables**

StarliteHD

